

SITE, GRADING, DRAINAGE, & EROSION CONTROL PLAN

SHODEEN
SHODEEN INCORPORATED
17 N FIRST STREET
GENEVA, IL 60134

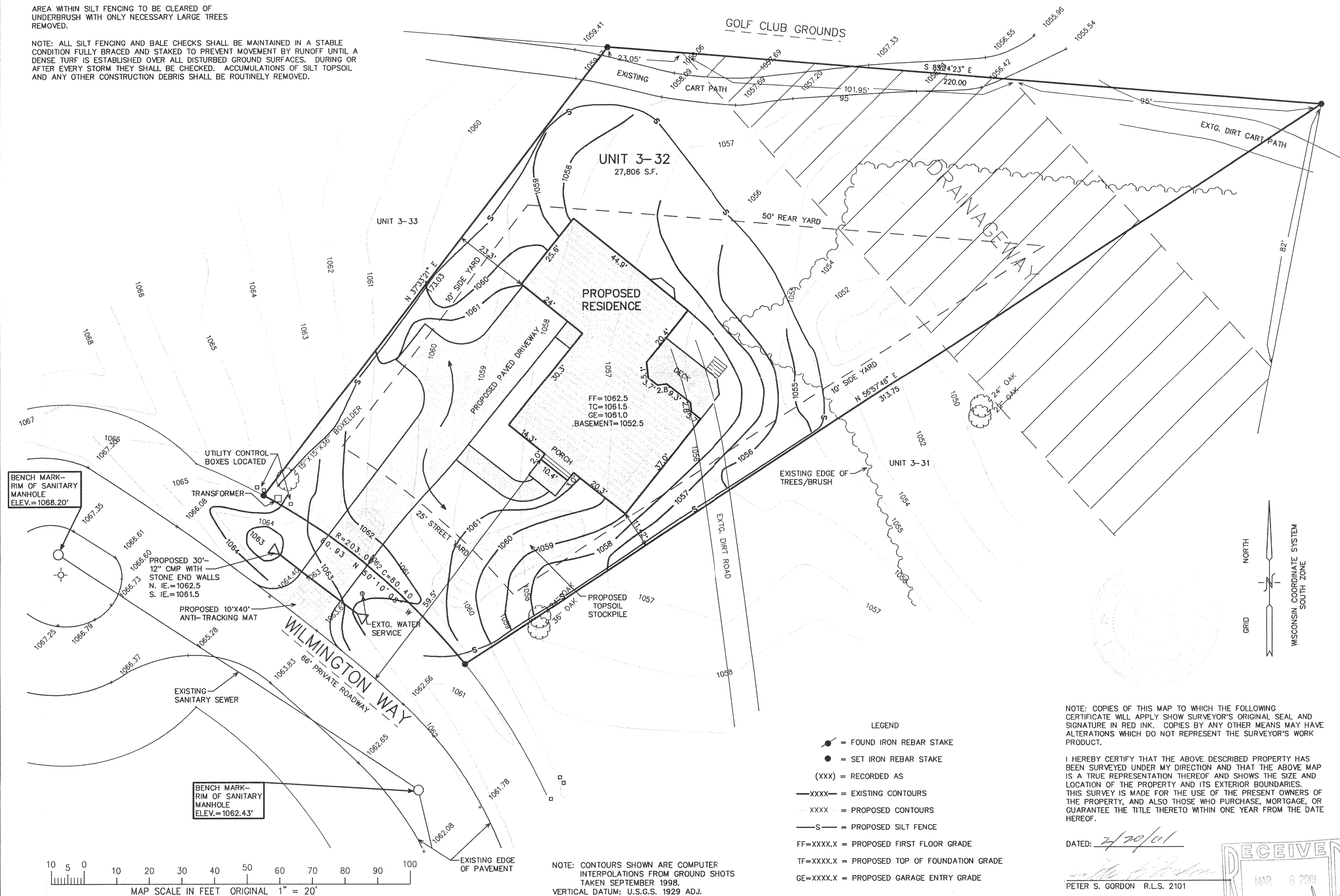
Office: (262) 723-2098
Fax: (262) 723-5886

REVISIONS
10/9/98 - TOPOGRAPHY & TREE LOC. ADDED

/12/01-
URVEY/TOPO
ONNECTED
O SITE PLAN

PROJECT NO.	3269.3-32
DATE:	05/09/97
SHEET NO.	1 OF 1

NOTE: ALL SILT FENCING AND BALE CHECKS SHALL BE MAINTAINED IN A STABLE CONDITION FULLY BRACED AND STAKED TO PREVENT MOVEMENT BY RUNOFF UNTIL A DENSE TURF IS ESTABLISHED OVER ALL DISTURBED GROUND SURFACES. DURING OR AFTER EVERY STORM THEY SHALL BE CHECKED. ACCUMULATIONS OF SILT TOPSOIL AND ANY OTHER CONSTRUCTION DEBRIS SHALL BE ROUTINELY REMOVED.



JCN-3-32

217-2038