

71. June 24, Survey,
 a strip of land W.
 Road, strip 164.4' wide
 Cemetery to ctr.
 164.4' line 1071.7',
 159.30' from W. line Oakhill
 5.1' to center Elkhorn
 $1072.7 + 1142' = 1107.85'$
 2

435
 Run line from Mon.
 to post at N. Cor.
 and measured N. from
 350' and set iron
 said cor. post and
 line cemetery and W.
 and set iron stk.
 6/25/30 cut brush and re-measured
 N. W. cor. post of Oakhill
 re-set stake, change
 on West Cemetery line
 correction 1.1' East.
 Set transit 350' N. on
 on ctr. fence post at
 and to right or west
 350' and made point
 Cemetery extended 350'
 fence line, measured
 350' to W. end of N.

request of J. Notter
 side Fenner land Elkhorn
 running from W. line Oakhill
 of Elkhorn Road
 N. line 1142', both
 Cemetery or W. line Sect 26
 road,
 $\times 164.4 = 4.18$ acres

60
 at N. ^E cor. Sect. 26
 Oakhill Cemetery
 said N. W. cor. post
 stk. set iron stk. at
 measured S. on W.
 line Sect. 26 164.4'
 measured line 350' N. from
 Cemetery. (correct line) and
 3" re-set stake 164.4' So.
 and W. set line 25-2-17,

sect. line. (on stake) sighted
 N. W. cor. of Cemetery
 at st. h. and measured
 Measured west on N. line
 and set iron stk. on
 N. from last point
 350' line, fell 3' N. of

72

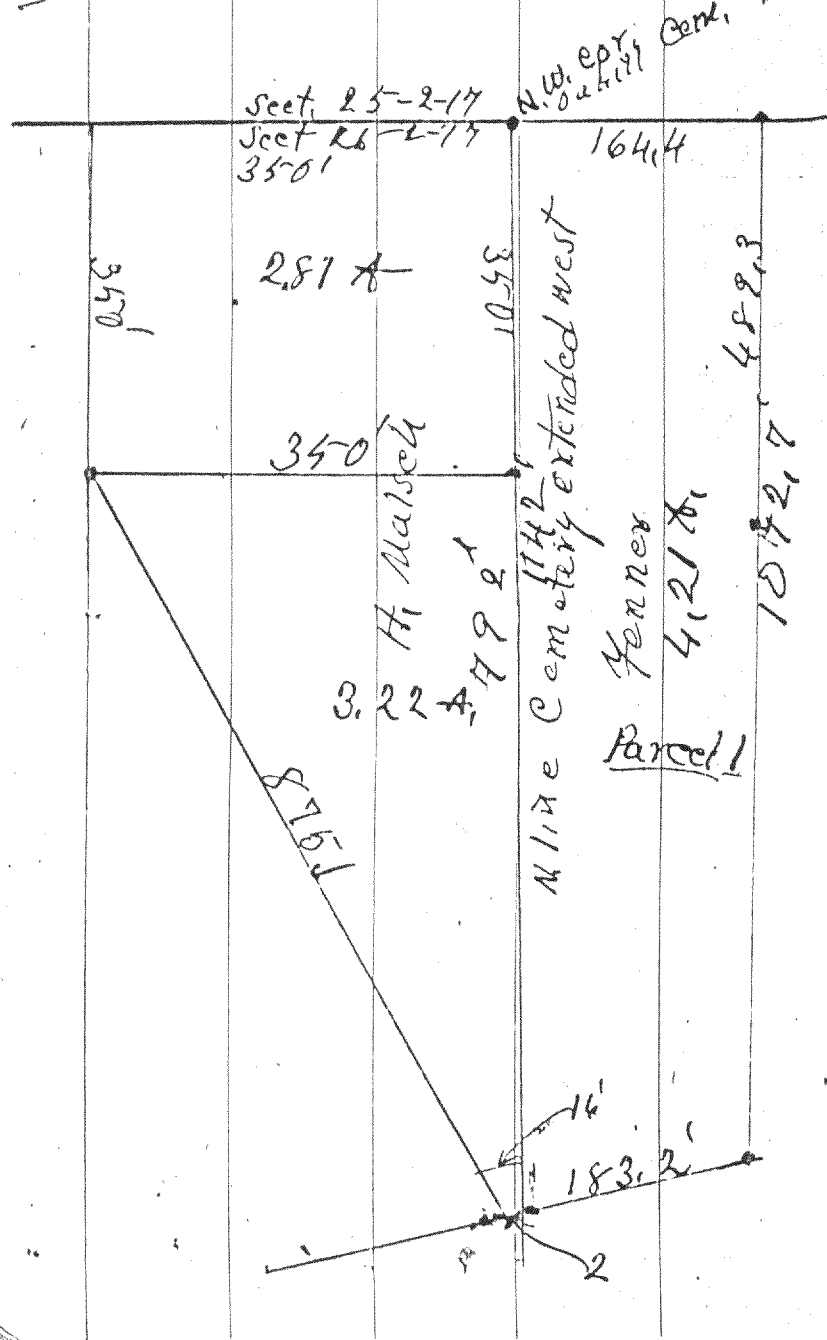
point set for W. end
 Adjusted to make
 length 350' Iron
 Iron stk. at N. W. cor
 N. side of post.
 Measured northerly on
 from W. end of fence
 Cemetery extended West.
 Measured S. W. from
 sy. tract, 840.8' to N.
 and ~~and~~ 84.3' to center
 falls 2' N. of line of
 line of pavement. Said
 is also 185.2' N. of
 that sold to Fenner's
 piece bought of Fenner
 N. line or N. line Cemetery Ex
 S. line is 1072.7'
 350' sy. whose S. E. cor
 whose 2 line is on line
 from N. W. cor. of 350' sy.
 road 2' N. of N. Cemetery

of N. line,
 N. & W. lines agree as to
 stks at all corners,
 cemetery is central at
 E. road fence line 16'
 on line of N. line of
 and set iron stk.
 W. end line of 350'
 end 16' line
 of highway (875.1'). Said
 Cemetery extended to ctr.
 point on ctr. line of paved
 line between Fenner and
 brother-in-law,
 is 1644' wide N. + S.
 is 1142' to ctr. of road
 is N. W. cor. Cemetery and
 between sects 25 + 26,
 parcel S. W. to ctr. of
 line extended 875.1'

72

Fenner & Malsch

to S. J. Notter.



Description Fenner parcel
 Begin at an iron stk at N.W.
 cor. Oak Hill Cemetery, on
 line between Sects 25 & 26, T. 2,
 N. R. 17 E. thence W. in N. line
 Cemetery extended 1142' to
 ctr. of highway. (notch in point)
 thence S. $24^{\circ} 49'$ E. in said
 ctr. line, 183.2' to notch
 in point, thence E. in N.
 line cemetery extended west
 39' to ~~the~~ iron stk. in
 N. line of highway, which
 said point and stk are
 164.4' S. of N. line of cemetery
 extended, thence in same
 line E. 1072.7' from ctr.
 of road, over 2 iron stks
 to an iron stk in W. line
 of cemetery or W. line
 Sect. 25-12-17. thence N.
 in said W. line Sect. 25
 164.4' to point of beginning
 contains 4,21 ft. more or less

73

Parcel 2 of 1

Begin at iron stn;
 tery, also on line betw
 R. 17 E, thence N. in
 W. 11 N. line cemetery
 stn, thence S. parallel
 iron stn. on N. line
 in said N. line extended
 contains 281 A.

Parcel

Begin in line Cemetery
 350' W. of N. W. cor.
 N. parallel to line
 R. 17 E. 350 to an
 840.8' to an iron
 cor. post W. end N. line
 Highway 12. end on to
 34.3' farther; or total
 in ctr. line said road
 247.1; thence E. in said
 beginning, contains
 to that acreage. 421 +
 completed survey

Notter from to, Malsch,
 at N. W. cor. Oakhill Ceme-

ten Sects 25 & 26, Town 2 N,
 said section line 350' ^{to iron stn} thence
 Ext. W. 350' to an iron
 to said section 350 to an
 Cemetery extended W. thence
 350 to place of beginning
 more or less,

3,

Extended W. at an iron stn.
 Oakhill Cemetery, thence
 between sects 25 & 26, T. 2 N.
 iron stn.; thence S. W.
 stn. ~~340~~ 16' N. W. from
 Cemetery Ext. W. to E. line
 ctr. of point highway 12
 875.1'. thence southeasterly
 2' to N. line Oakhill cemetery
 N. line 792' to point of
 322. A. more or less
 $281 + 322 = 1024$ A.
 June 25, 1930