

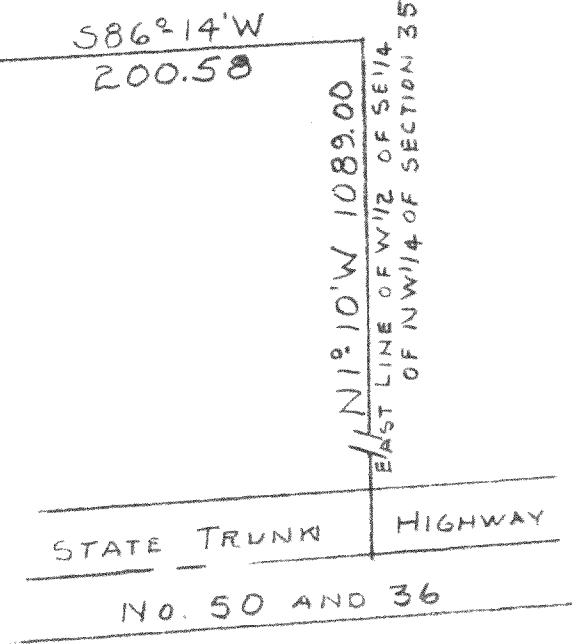
N



SCALE - 1" = 100'  
O = IRON PIPE

PLAT OF SURVEY OF LAND LOCATED IN THE NORTHWEST 1/4 OF SECTION 35, T2N R17E WALWORTH COUNTY, WISCONSIN  
OCT. 4, 1956

*George T. Dunham*  
GEORGE T. DUNHAM, SURVEYOR  
DELAYAN, WISCONSIN



G-35-5Q Part of  
ST 4 11  
SR 16 4  
SW 16 11