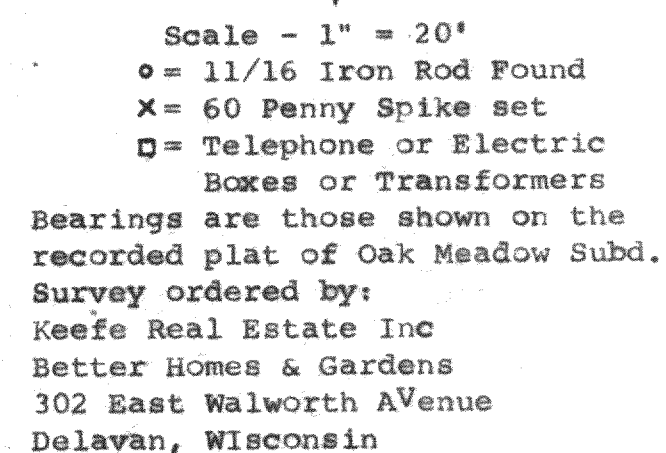


RECEIVED  
AUG 19 1986  
J. L.



The seal is circular with a double-lined border. Between the lines, the words "WISCONSIN" are at the top and "LAND SURVEYOR" are at the bottom, separated by two five-pointed stars. In the center, the text reads: "GEORGE T. DUNHAM", "S-306", "DELANE", and "WIS."