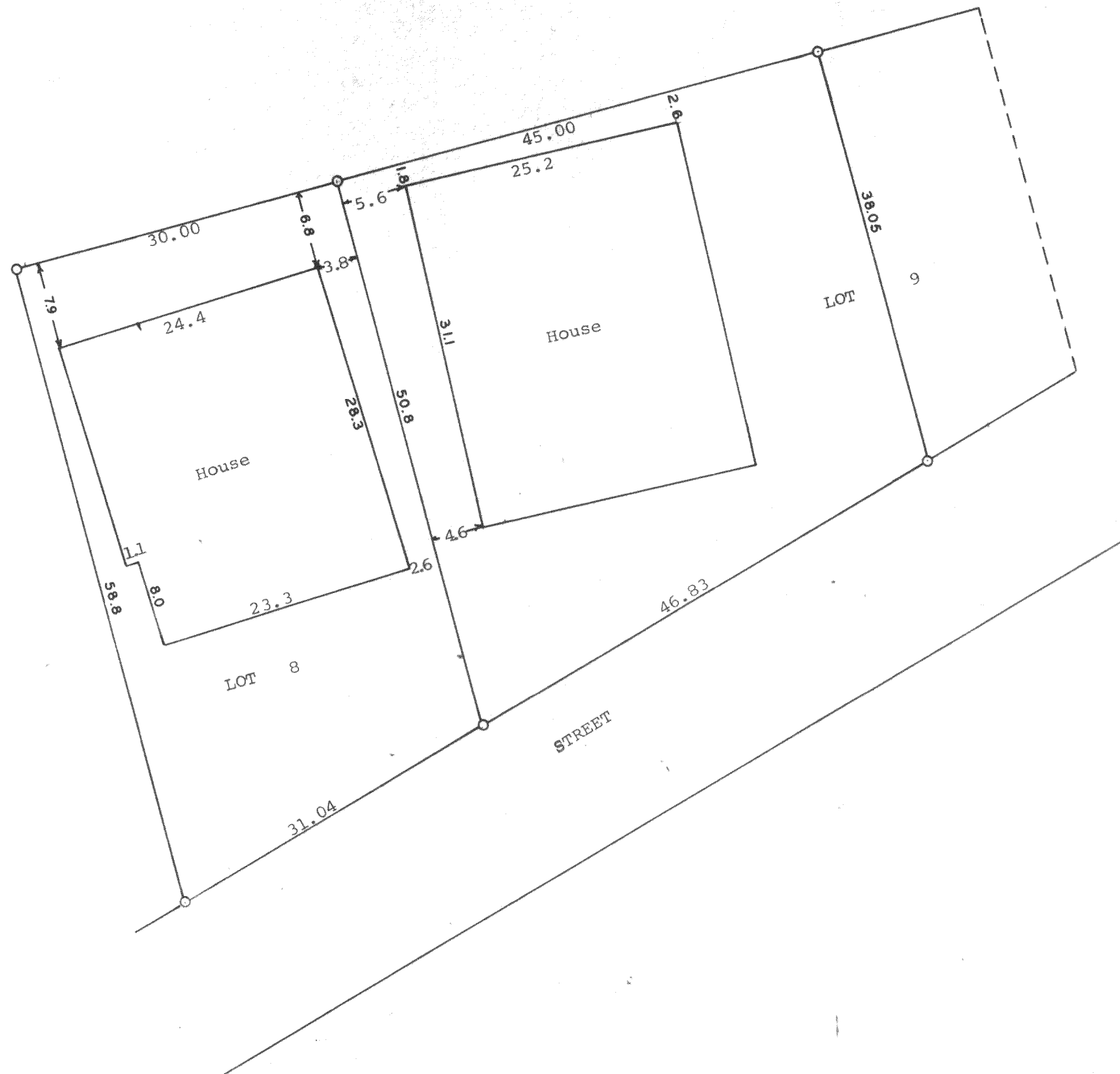


GEORGE T. DUNHAM
SURVEYING & SUBDIVIDING
DELAVER, WISCONSIN



Scale - 1" = 10'
O = Iron Pipe



Plat of survey of Lot 8 and the West 3/4 of Lot 9 in
Block "D" of Assembly Park, a subdivision located in
Section 21, T 2 N, R 16 E, Walworth County, Wisconsin.
December 15, 1970

George T. Dunham
George T. Dunham, Surveyor

FLA-50
11-50A

216-387