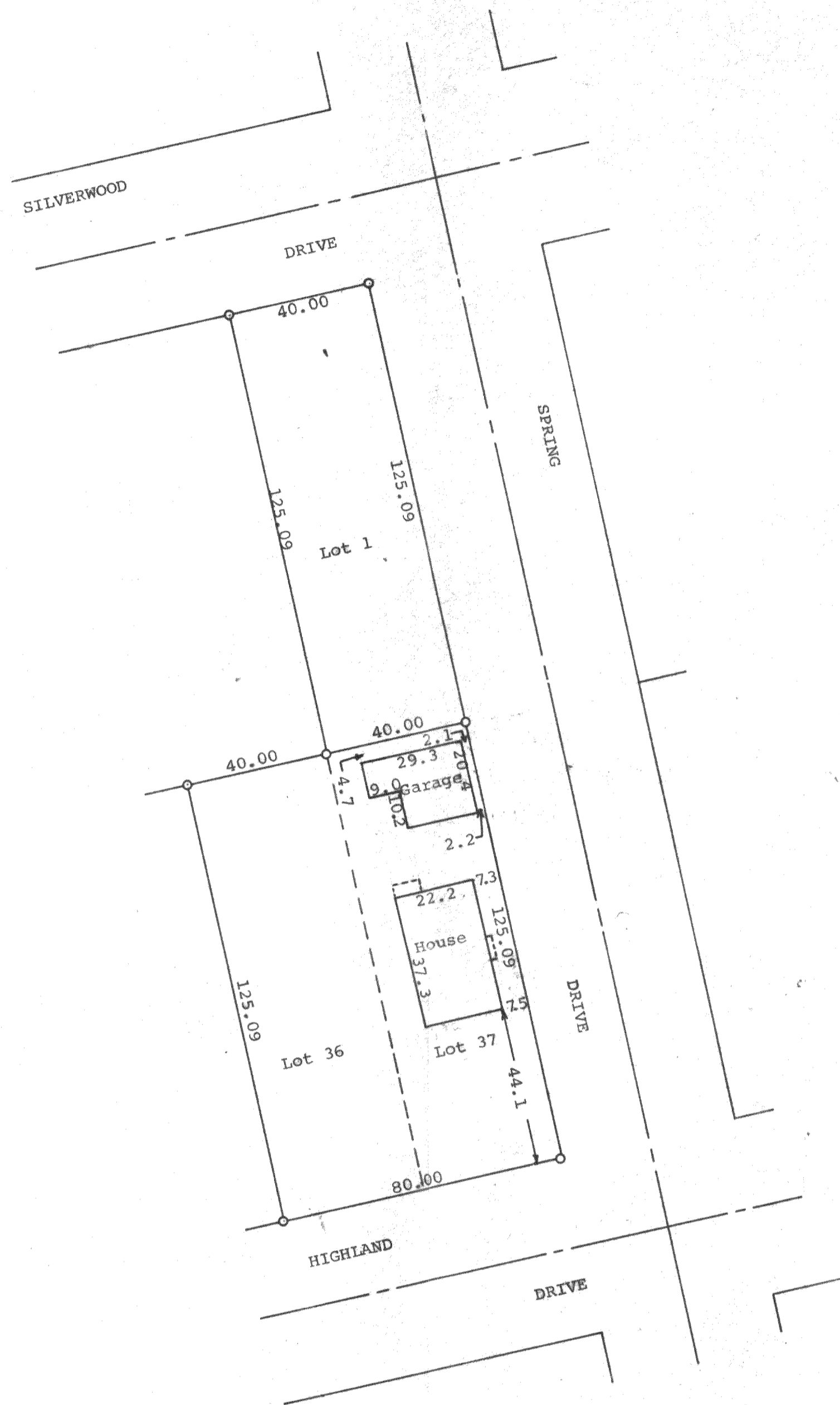


GEORGE T. DUNHAM
SURVEYING & SUBDIVIDING
DELAVER, WISCONSIN



N

Scale - 1" = 30'
O = Iron Pipe

STATE OF WISCONSIN) SS
WALWORTH COUNTY)

I, George T. Dunham, Surveyor, certify that I have surveyed the property described as follows,

Lots 1, 36, and 37 in Block 15 of Delavan Lake View Crest, a subdivision located in Section 31, T 2 N, R 16 E, Walworth County, Wisconsin,

and that the above plat is an accurate survey and a true representation thereof and correctly shows the exterior boundary lines and location of buildings on said property and the correct measurements thereof.

August 28, 1969

Revised 9/12/69

Revised 10/1/69

George T. Dunham
George T. Dunham, Surveyor

FDLV- 71
FDLV- 87