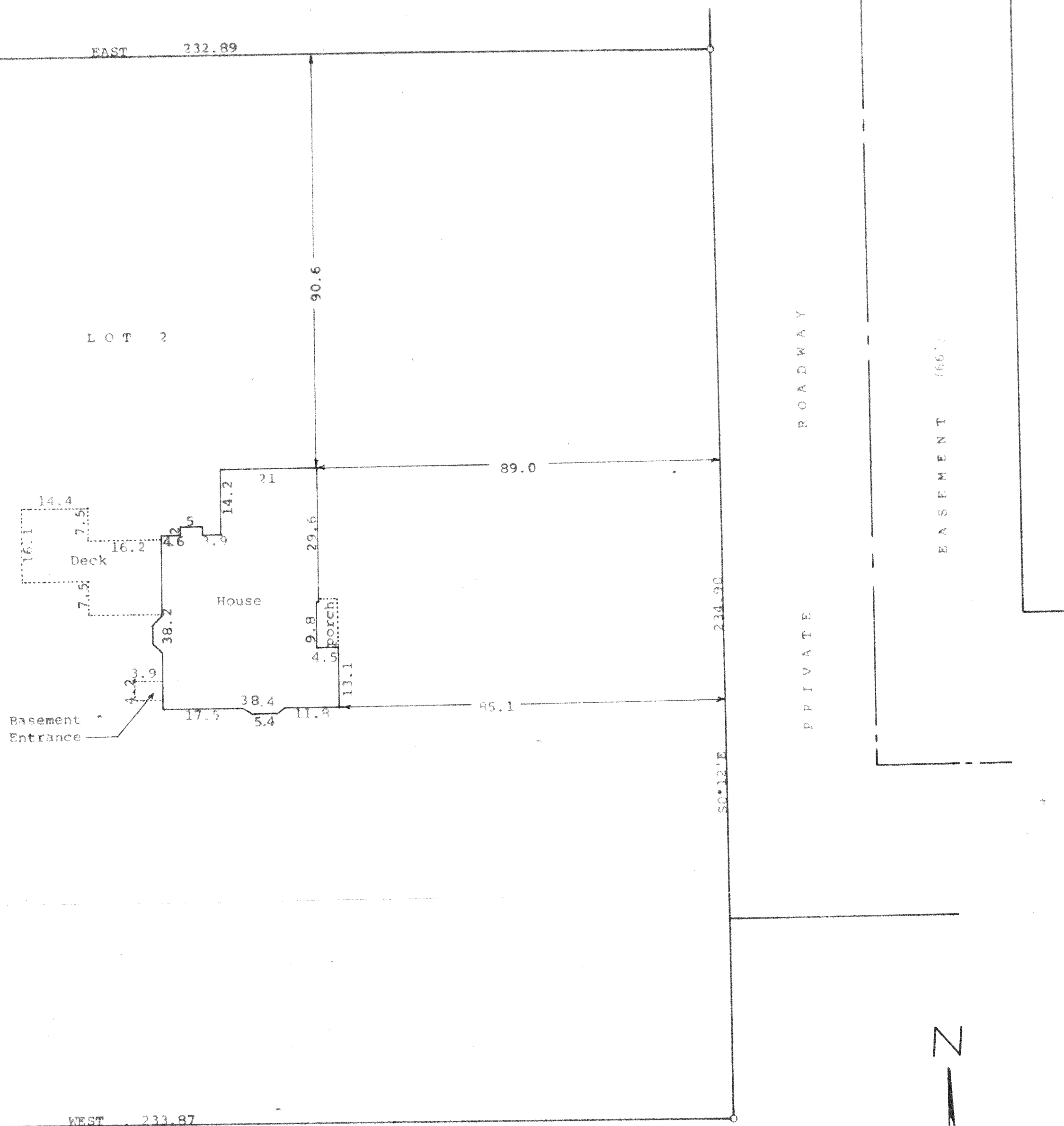


Diagram showing a rectangular shed in a corner. The shed is 8.1m wide and 12.1m long. The distance from the corner to the top-right corner of the shed is 13.0m. The distance from the corner to the bottom-left corner of the shed is 4.5m.



RECEIVED
MAY 9 2003
DRP

N

Scale - 1" = 20'
 $\varnothing = 3/4"$ Iron Pipe
 $\bigcirc = 1"$ Iron Pipe

Bearings are those on the recorded plat of
Certified Survey No. 2627

George T. Dunham
George T. Dunham, Surveyor

