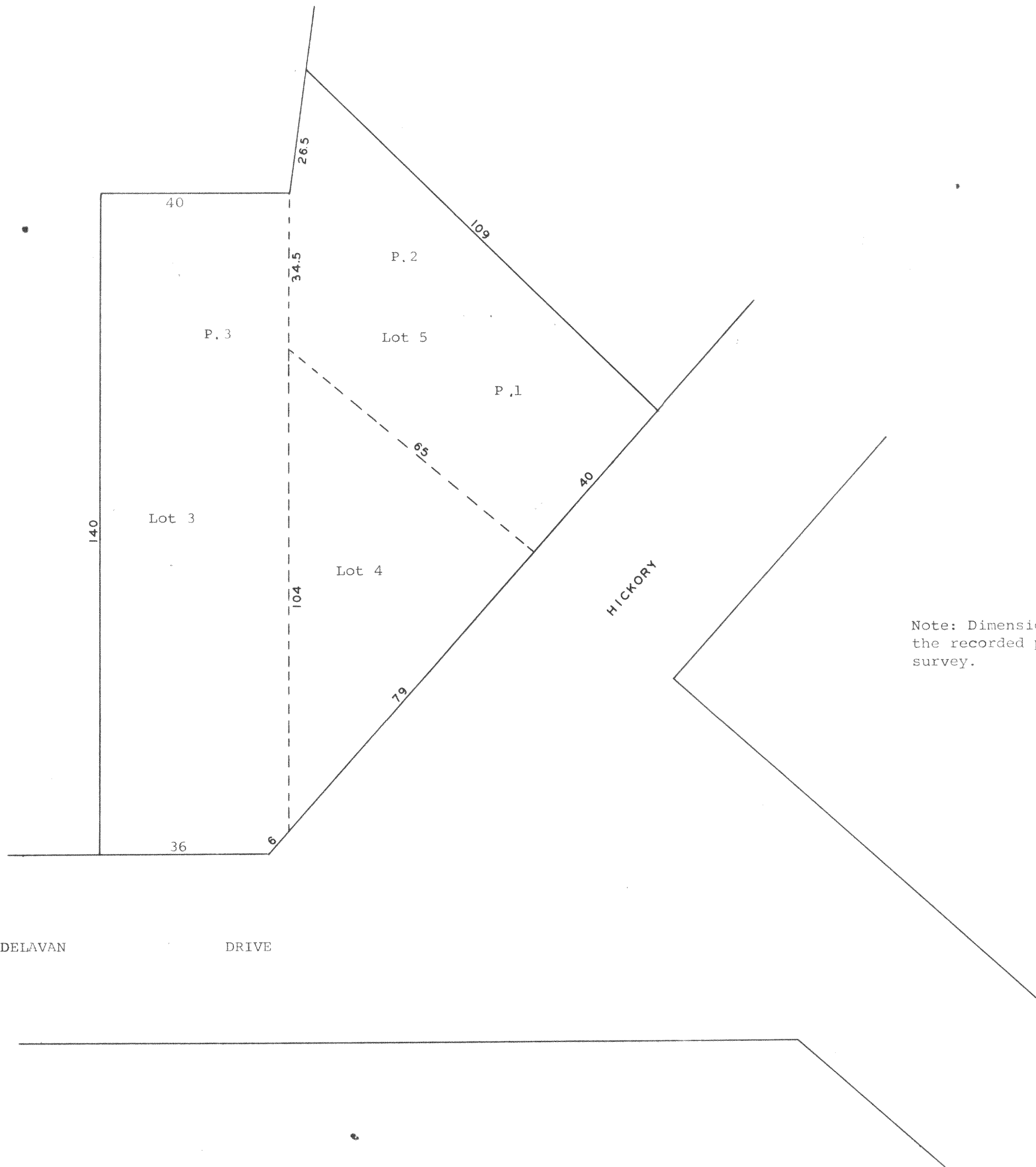


GEORGE T. DUNHAM
SURVEYING & SUBDIVIDING
DELAVAN, WISCONSIN



Scale - 1" = 20'

Note: Dimensions shown on plat are those shown on the recorded plat and not according to a field survey.

Plat showing the location of the percolation tests made on Lots 3, 4, & 5, Block 6, Inlet Oaks Subdivision, Town of Delavan, Walworth County, Wisconsin. August 25, 1967

George T. Dunham
George T. Dunham, Surveyor

FIN-43?