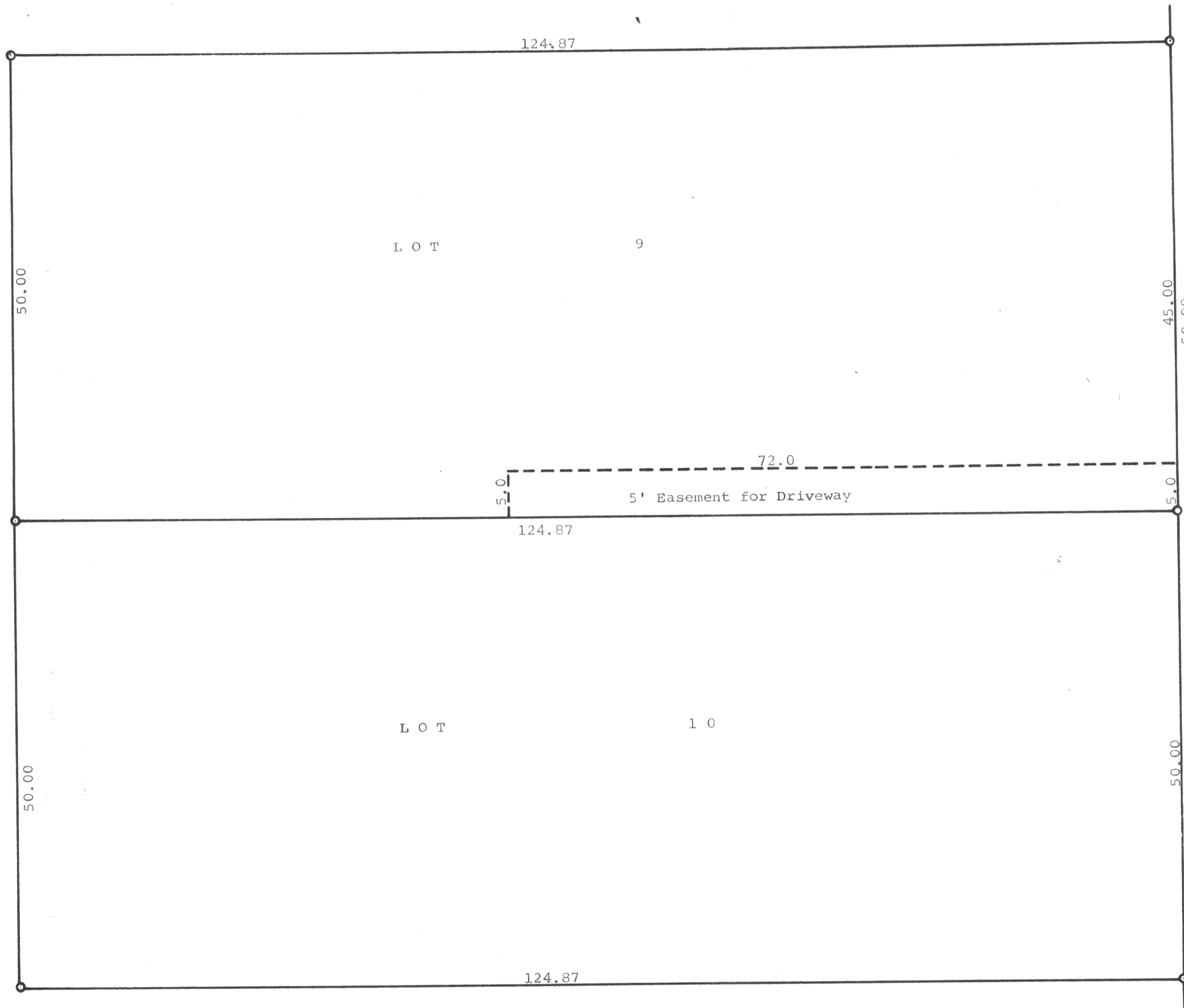


GEORGE T. DUNHAM  
SURVEYING & SUBDIVIDING  
DELAVAN, WISCONSIN



Scale - 1" = 10'  
● = Iron Pipe

Plat of survey of Lots 9 and 10 of Lake Delavan Highlands,  
a subdivision located in Section 31, T 2 N, R 16 E, Walworth  
County, Wisconsin  
October 19, 1965

*George T. Dunham*  
George T. Dunham, Surveyor

FLAD-8,8A

216-209