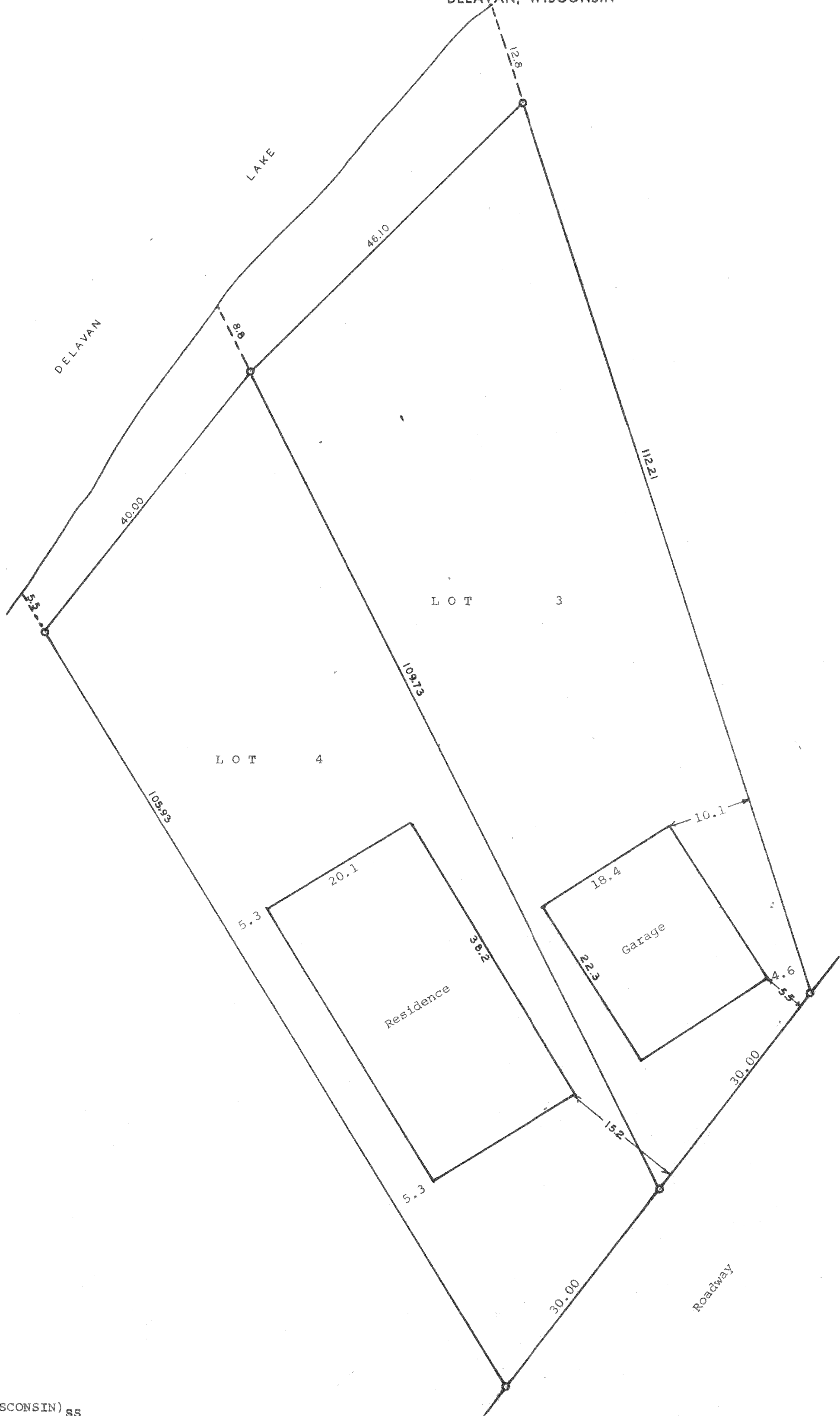


GEORGE T. DUNHAM  
SURVEYING & SUBDIVIDING  
DELAVER, WISCONSIN



Scale 1" = 10'  
○ = Iron Pipe

STATE OF WISCONSIN) ss  
WALWORTH COUNTY )

I, George T. Dunham, Surveyor, do certify that I have surveyed the property described as follows, Lots 3 and 4, in Block 1, South Shore Manor located in Section 32, T 2 N, R 16 E, Walworth County, Wisconsin, and that the above plat is an accurate survey and a true representation thereof and correctly shows the exterior boundary lines and location of the improvements thereon and the correct measurements thereof.

May 25, 1965

*George T. Dunham*  
George T. Dunham, Surveyor

FSS-3