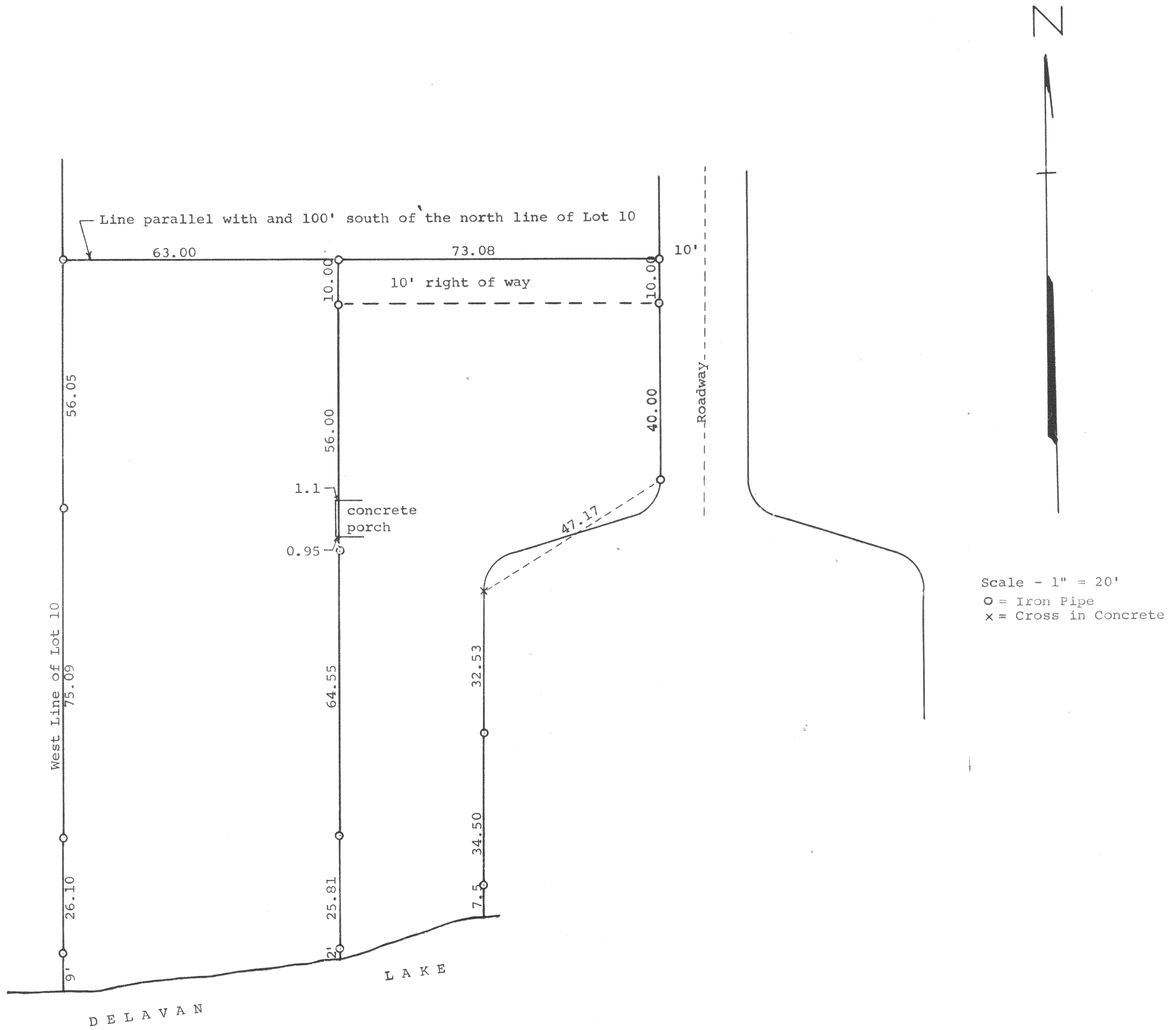


GEORGE T. DUNHAM
 SURVEYING & SUBDIVIDING
 DELAVAN, WISCONSIN



Plat of survey of part of Lot 10 of "Chicago Club Subdivision" located in Section 31, T 2 N R 16 E Walworth County, Wisconsin.
 October 1963

George T. Dunham
 George T. Dunham, Surveyor

216-177