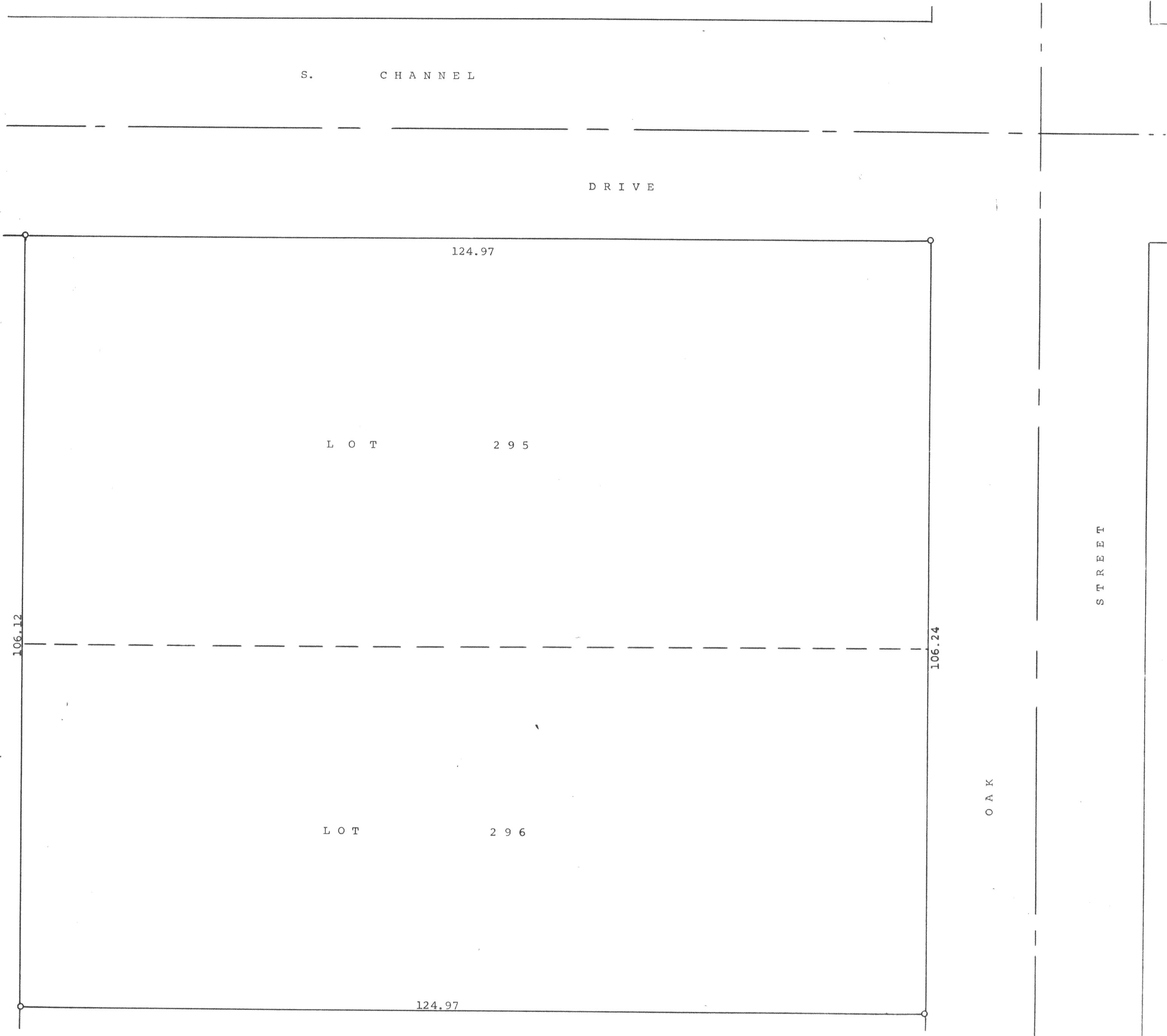


GEORGE T. DUNHAM  
SURVEYING & SUBDIVIDING  
DELAVAN, WISCONSIN



Plat of survey of Lots 295 and 296 of Lake Delavan Highlands located  
in Section 31, T 2 N R 16 E of Walworth County, Wisconsin  
July 1963

*George T. Dunham*  
George T. Dunham, Surveyor

Scale 1" = 10'  
○ = Iron Pipe

FLAD-224