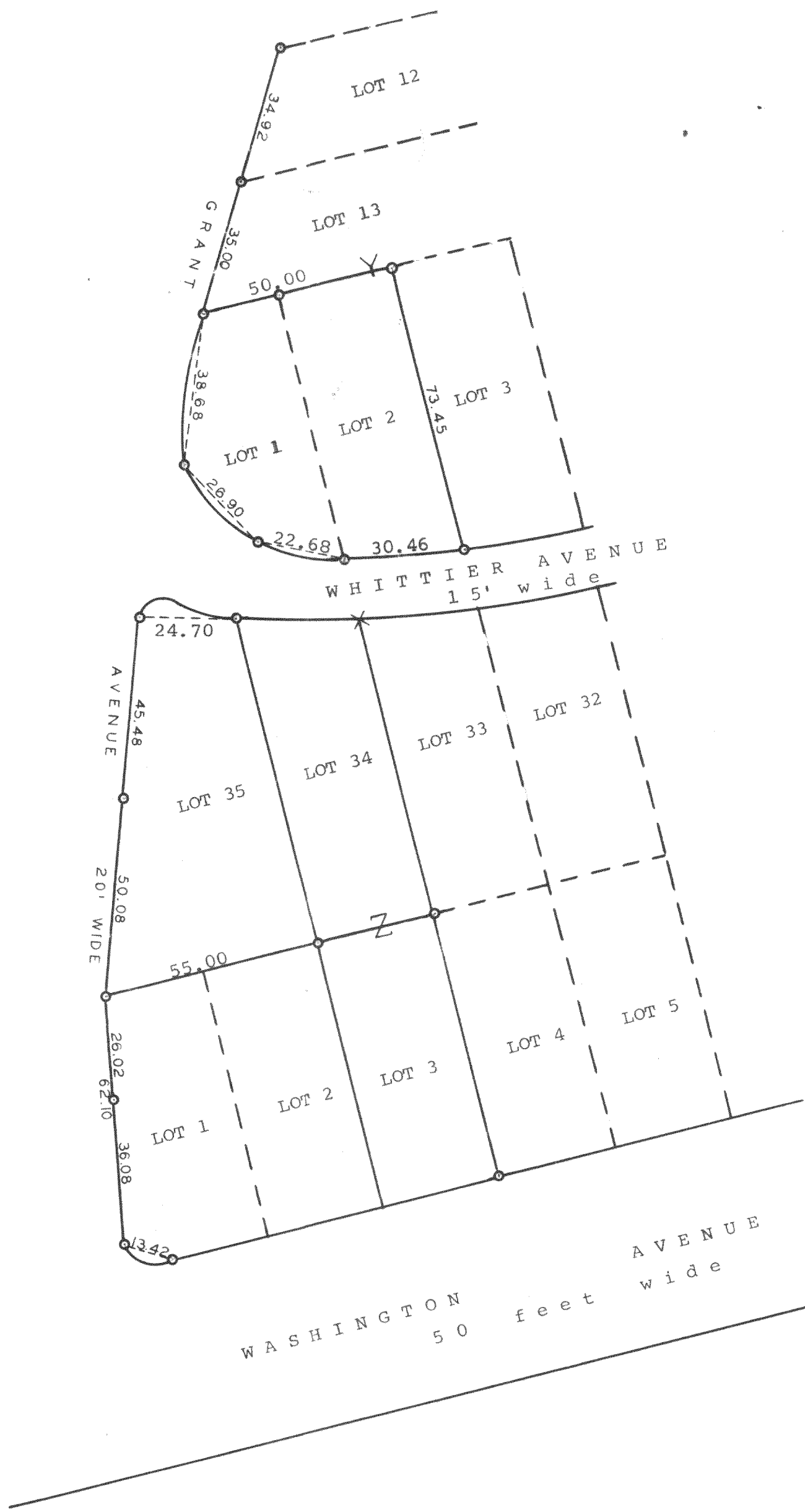


GEORGE T. DUNHAM
SURVEYING & SUBDIVIDING
DELAVAN, WISCONSIN



Scale - 1" = 30'

○ = Iron Pipe
X = Cross in concrete wall



Plat of survey of Lots 1 and 2 and the East line of Lots 12 and 13, Block Y and of the East line of Lots 1 and 35, Block Z all located in the Delavan Lake Assembly Grounds, T 2 N R 16 E, Walworth County, Wisconsin.
August 4, 1964

George T. Dunham
George T. Dunham, Surveyor

FDLA-213, 217, 218, 232