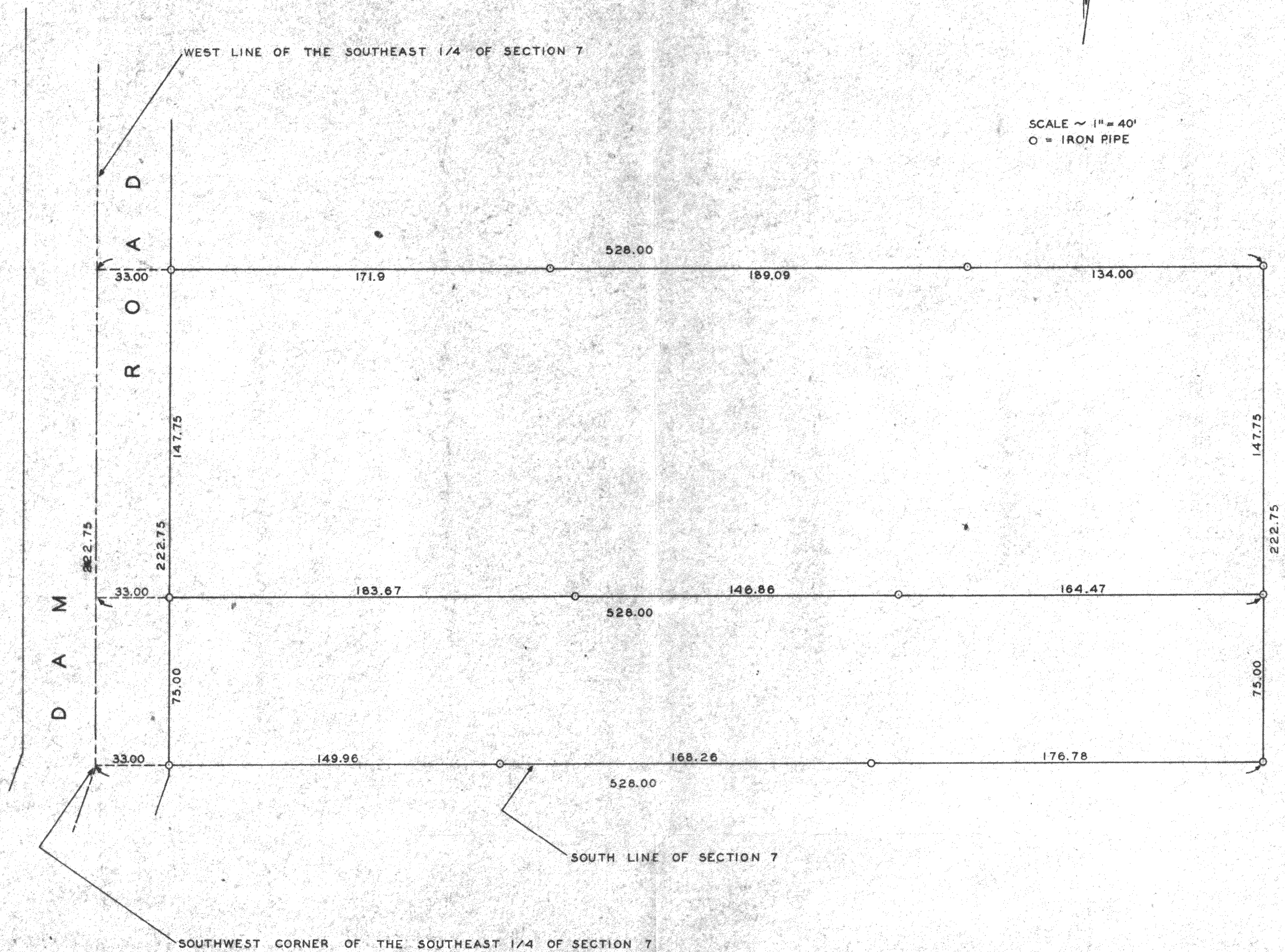


DUNHAM & RASMUSSEN
SURVEYING & ENGINEERING
DELAVAN, WISCONSIN



SCALE ~ 1" = 40'
O = IRON PIPE



Plat of survey of two parcels of land located in the ^{SW 1/4 of the} southeast 1/4 of Section 7, T 2 N R 16 E, Walworth County, Wisconsin.
July 26, 1960

George T. Dunham
George T. Dunham, Surveyor

D-7-10A & 2-10