

NORTHEAST CORNER OF SECTION 36, T2N R16E WALWORTH CO., WISCONSIN

SECTION 36, T2N R16E
SECTIONS 31, T2N R17E

TRUNK 'H'

COUNTY TRUNK

SOUTH ALONG SECTION LINE 1584.5 FEET

TRUNK 'H'

COUNTY TRUNK

SECTION 36, T2N R16E

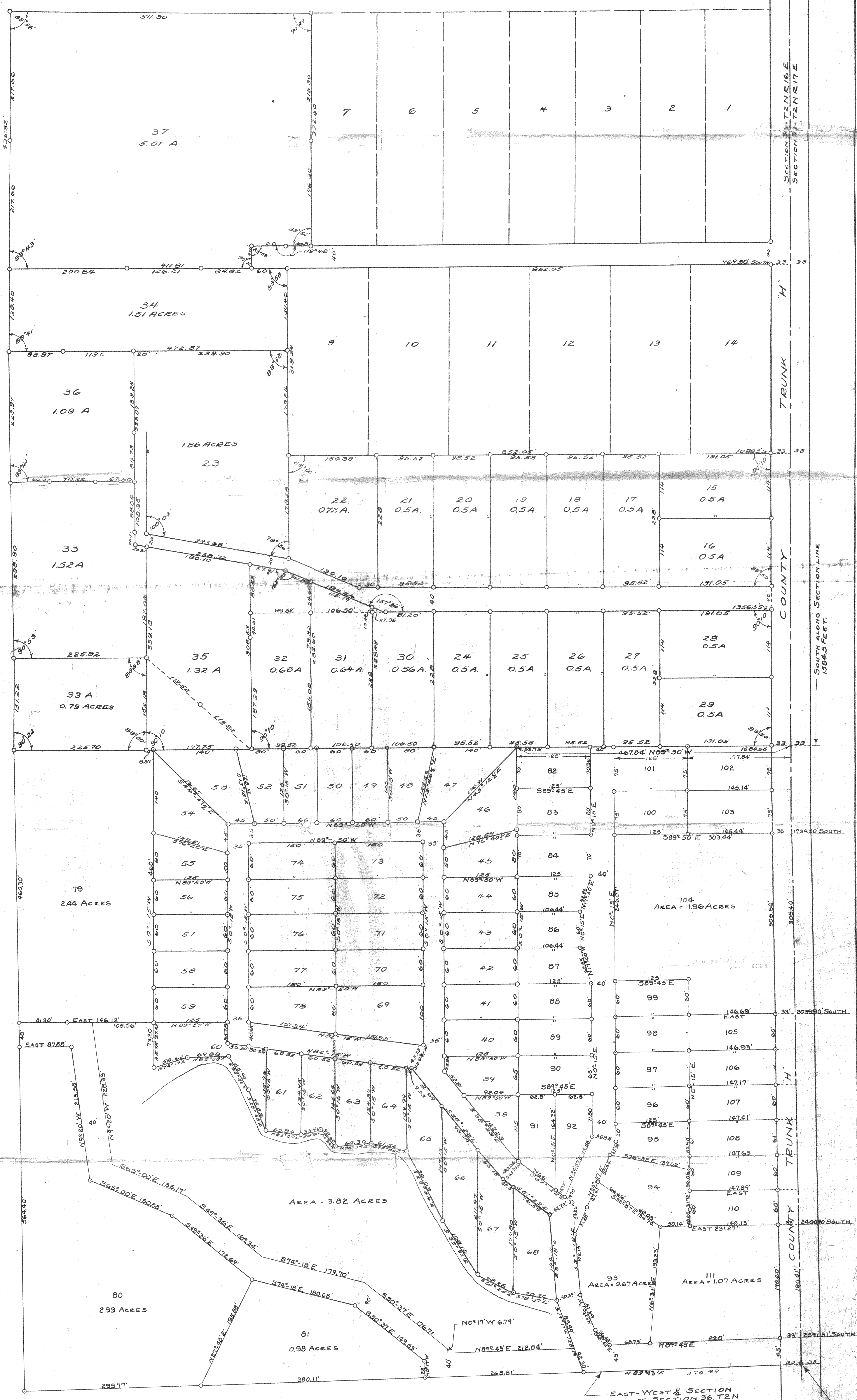
EAST-WEST 1/4 SECTION LINE OF SECTION 36, T2N R16E.

EAST 1/4 SECTION CORNER OF SECTION 36, T2N R16E

PLAT OF SURVEY OF LAND LOCATED IN THE EAST 1/2 OF THE NORTHEAST 1/4 OF SECTION 36, T2N R16E OF WALWORTH COUNTY WISCONSIN.
FLOYD J. JENSEN
COUNTY SURVEYOR

JAN. 1941
DEC. 1951

SCALE - 1" = 60'
O = IRON PIPES
● = CONC. MONU.



916-110.1