

EAST-WEST 1/4 SECTION LINE

WEST 1/4 SECTION CORNER OF SECTION 28, T2NR16E

CONC. MARKER LOCATED 1.07' SOUTH OF 1/4 SECTION LINE AND 1.50 FEET WEST OF POINT DESCRIBED AS 6.91 CHAINS EAST OF 1/4 CORNER

POINT LOCATED 6.91 CHAINS EAST OF THE WEST 1/4 SECTION CORNER



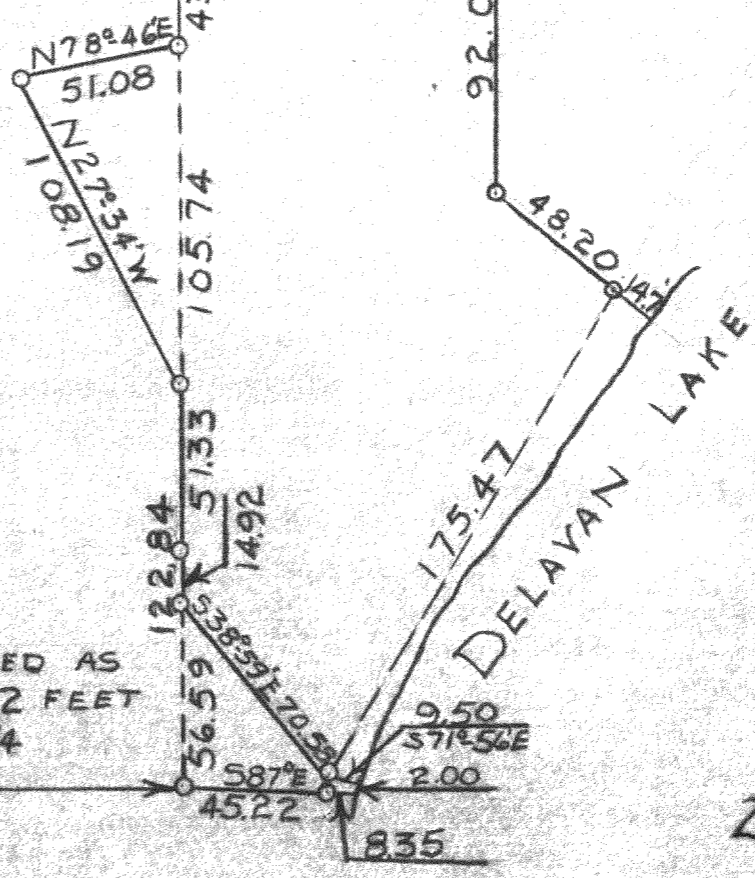
SCALE ~ 1" = 60'

● = CONC. MONU

○ = IRON PIPE

SURVEY OF LAND LOCATED IN THE SOUTHWEST 1/4 OF SECTION 28, T2NR16E, OF WALWORTH COUNTY, WISC. DEC. 1954

*George T. Dunham*  
 GEORGE T. DUNHAM, SURVEYOR  
 DELAVAN, WISCONSIN



IRON PIPE DESCRIBED AS BEING LOCATED 932 FEET SOUTH OF THE E-W 1/4 SECTION LINE

D-28-14 + FSI-9

216-19