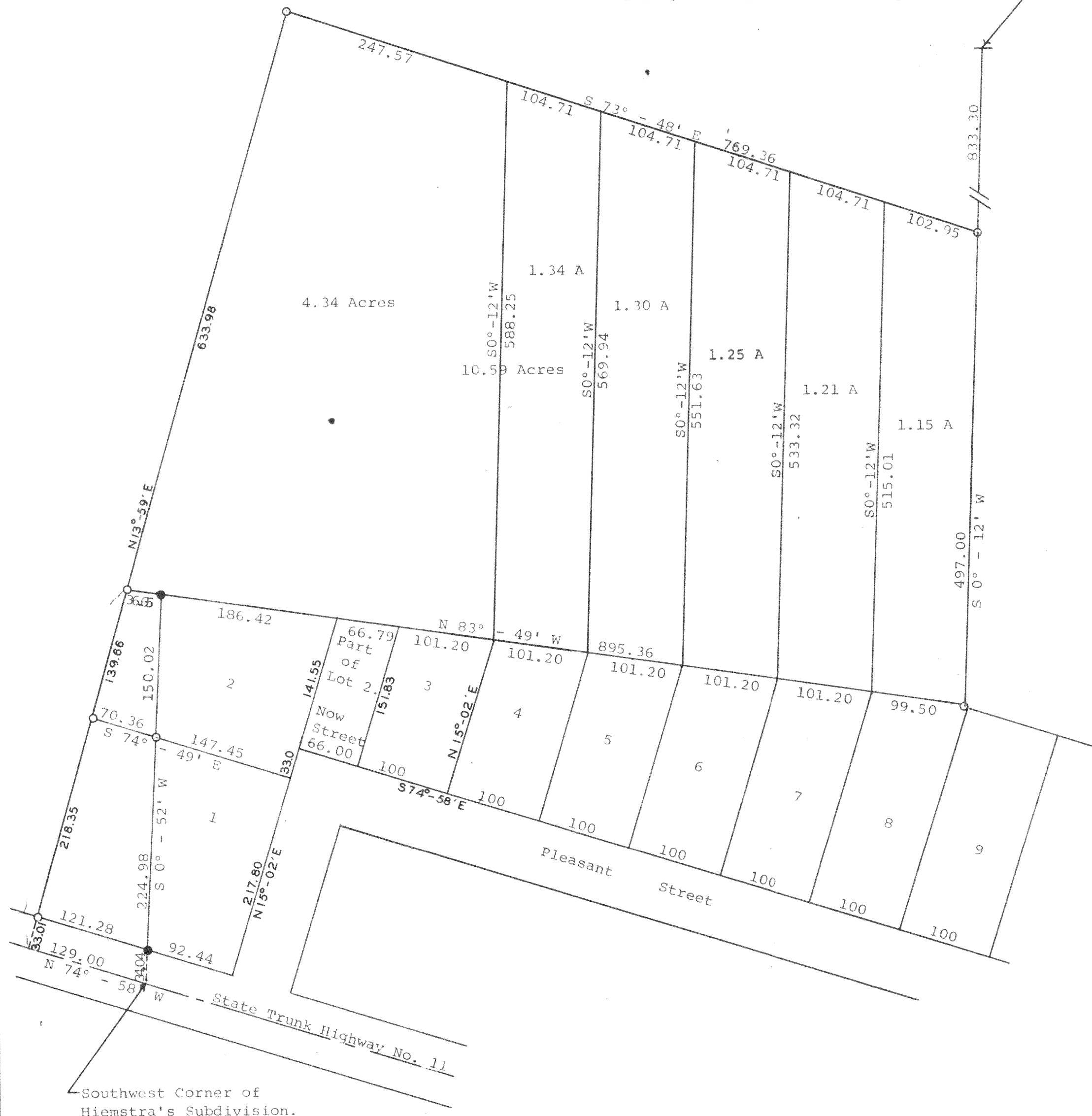


GEORGE T. DUNHAM
SURVEYING & SUBDIVIDING
DELAYAN, WISCONSIN

North $\frac{1}{4}$ Corner of Section 13,
T 2 N, R 15 E, Walworth County, Wisconsin



Scale - 1" = 100'
○ = Iron Pipe
● = Concrete Monument

Plat of survey of parcels of land located in the North-
west $\frac{1}{4}$ of Section 13, T 2 N, R 15 E, Walworth County,
Wisconsin.
June 1968

George T. Dunham
George T. Dunham, Surveyor

D-13-1
D-13-4B
13-4C
13-4D
13-4E
13-4F
13-4G
13-4H
13-4I
13-4J
13-4K
13-4L
13-4M
13-4N
13-4O
13-4P
13-4Q
13-4R
13-4S
13-4T
13-4U
13-4V
13-4W
13-4X
13-4Y
13-4Z
13-5
13-6
13-7
13-8
13-9
13-10
13-11
13-12
13-13
13-14
13-15
13-16
13-17
13-18
13-19
13-20
13-21
13-22
13-23
13-24
13-25
13-26
13-27
13-28
13-29
13-30
13-31
13-32
13-33
13-34
13-35
13-36
13-37
13-38
13-39
13-40
13-41
13-42
13-43
13-44
13-45
13-46
13-47
13-48
13-49
13-50
13-51
13-52
13-53
13-54
13-55
13-56
13-57
13-58
13-59
13-60
13-61
13-62
13-63
13-64
13-65
13-66
13-67
13-68
13-69
13-70
13-71
13-72
13-73
13-74
13-75
13-76
13-77
13-78
13-79
13-80
13-81
13-82
13-83
13-84
13-85
13-86
13-87
13-88
13-89
13-90
13-91
13-92
13-93
13-94
13-95
13-96
13-97
13-98
13-99
13-100