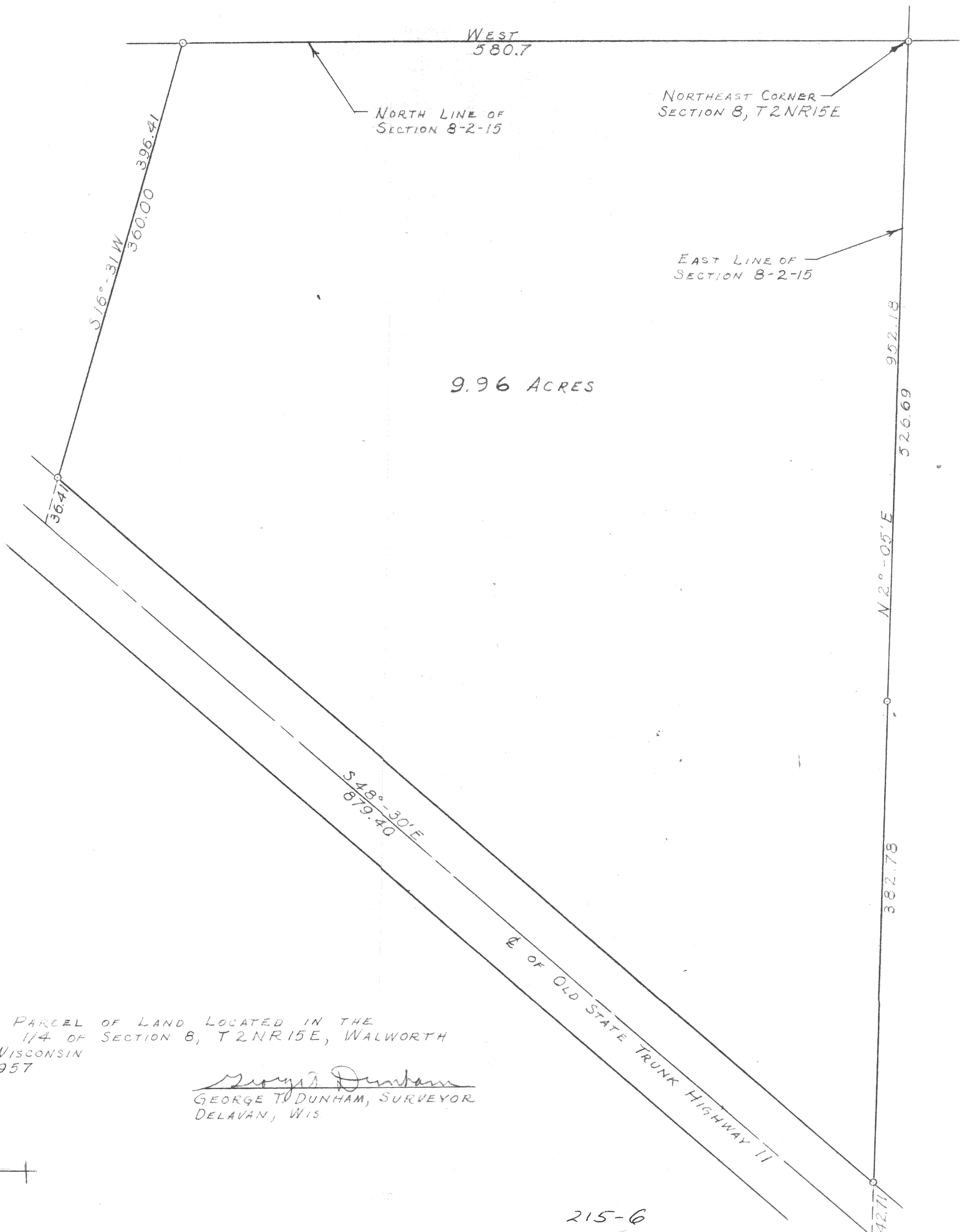




SCALE ~ 1" = 60'
O ~ IRON PIPE



WEST
580.7

NORTH LINE OF
SECTION 8-2-15

NORTHEAST CORNER
SECTION 8, T2NR15E

EAST LINE OF
SECTION 8-2-15

9.96 ACRES

S16°-31'W
360.00 396.41

36.41

952.18

526.69

N2°-05'E

382.78

S48°-30'E
879.40

Q OF OLD STATE TRUNK HIGHWAY II

42.71

PLAT OF A PARCEL OF LAND LOCATED IN THE
NORTHEAST 1/4 OF SECTION 8, T2NR15E, WALWORTH
COUNTY, WISCONSIN
JUNE 18, 1957

George T. Dunham
GEORGE T. DUNHAM, SURVEYOR
DELAVER, WIS

D-8-1

C.S. 1430

215-6