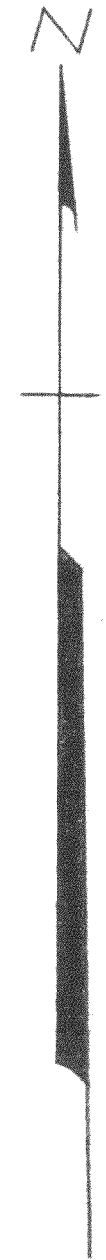
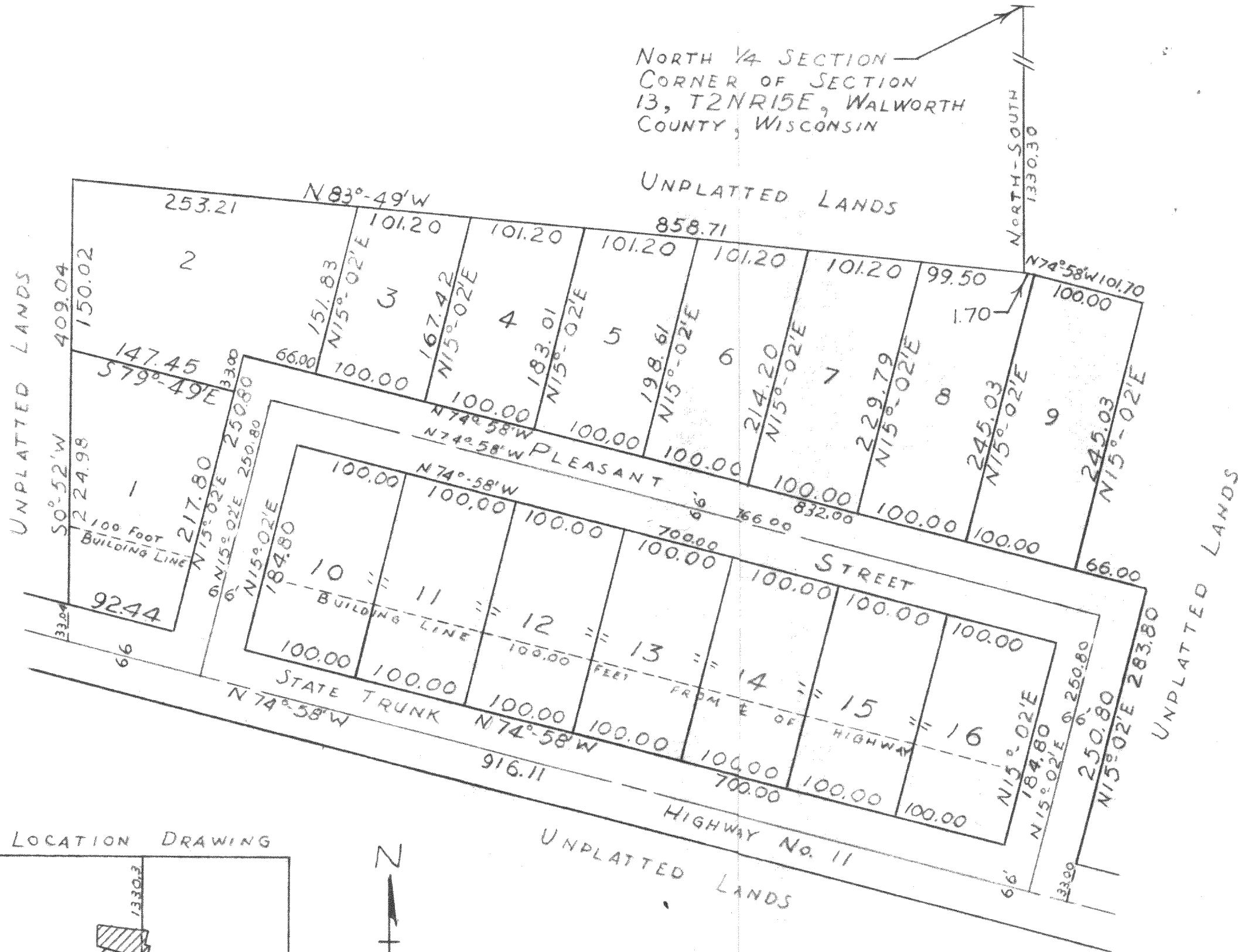
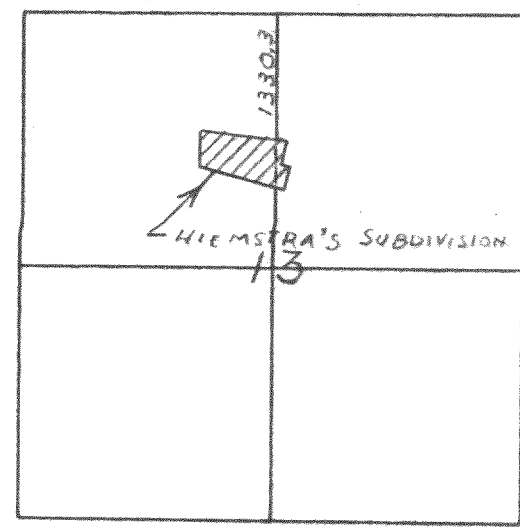


NORTH 1/4 SECTION
 CORNER OF SECTION
 13, T2N R15E, WALWORTH
 COUNTY, WISCONSIN



SCALE ~ 1" = 100'

LOCATION DRAWING



SCALE ~ 1" = 2000'

Hiemstra Subd.

SECTION 13, T2N R15E OF
 WALWORTH COUNTY, WISCONSIN