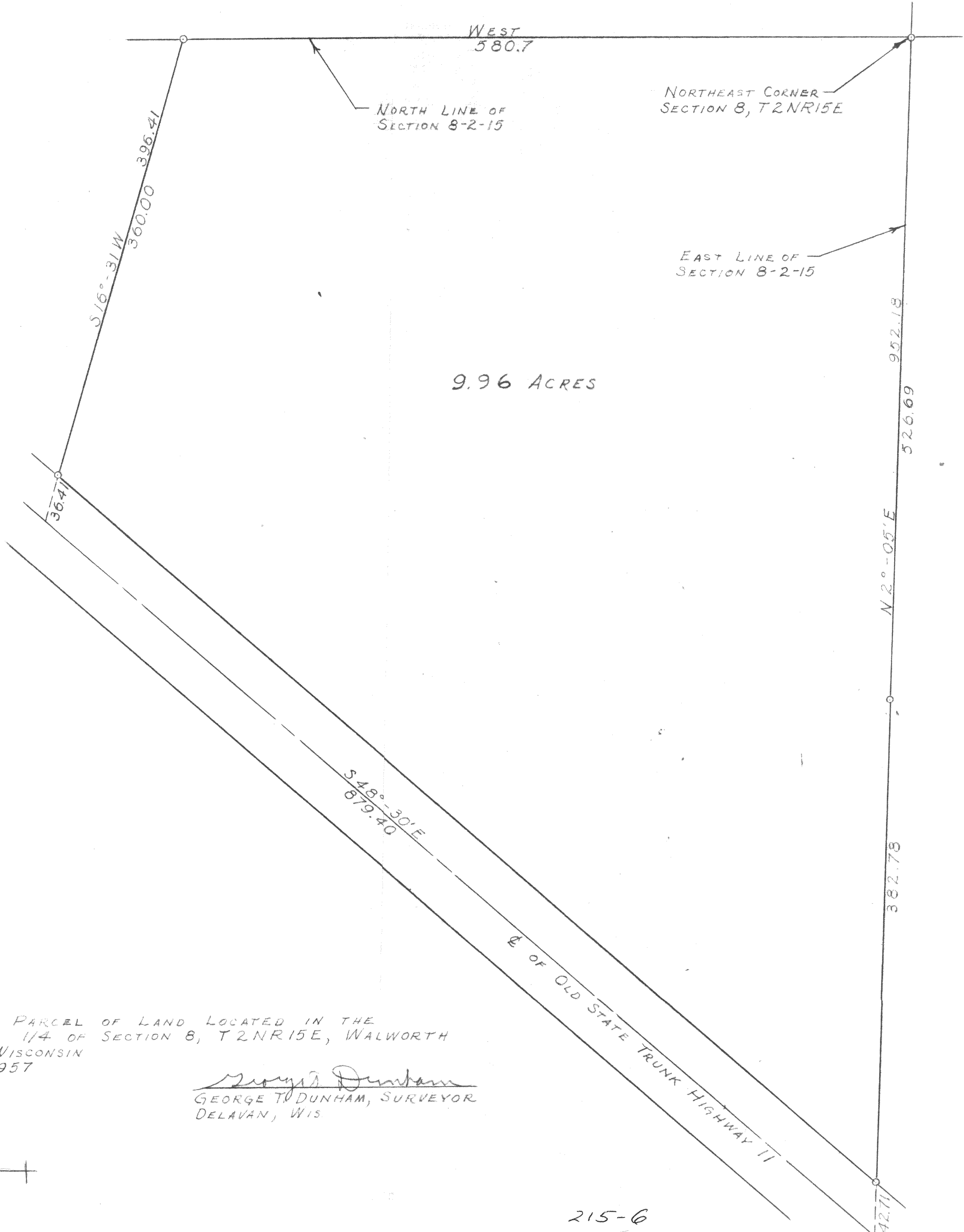




SCALE ~ 1" = 60'
O ~ IRON PIPE



9.96 ACRES

PLAT OF A PARCEL OF LAND LOCATED IN THE
NORTHEAST 1/4 OF SECTION 8, T2NR15E, WALWORTH
COUNTY, WISCONSIN
JUNE 18, 1957

George T. Dunham
GEORGE T. DUNHAM, SURVEYOR
DELAVER, WIS

D-8-1

C.S. 1430

215-6