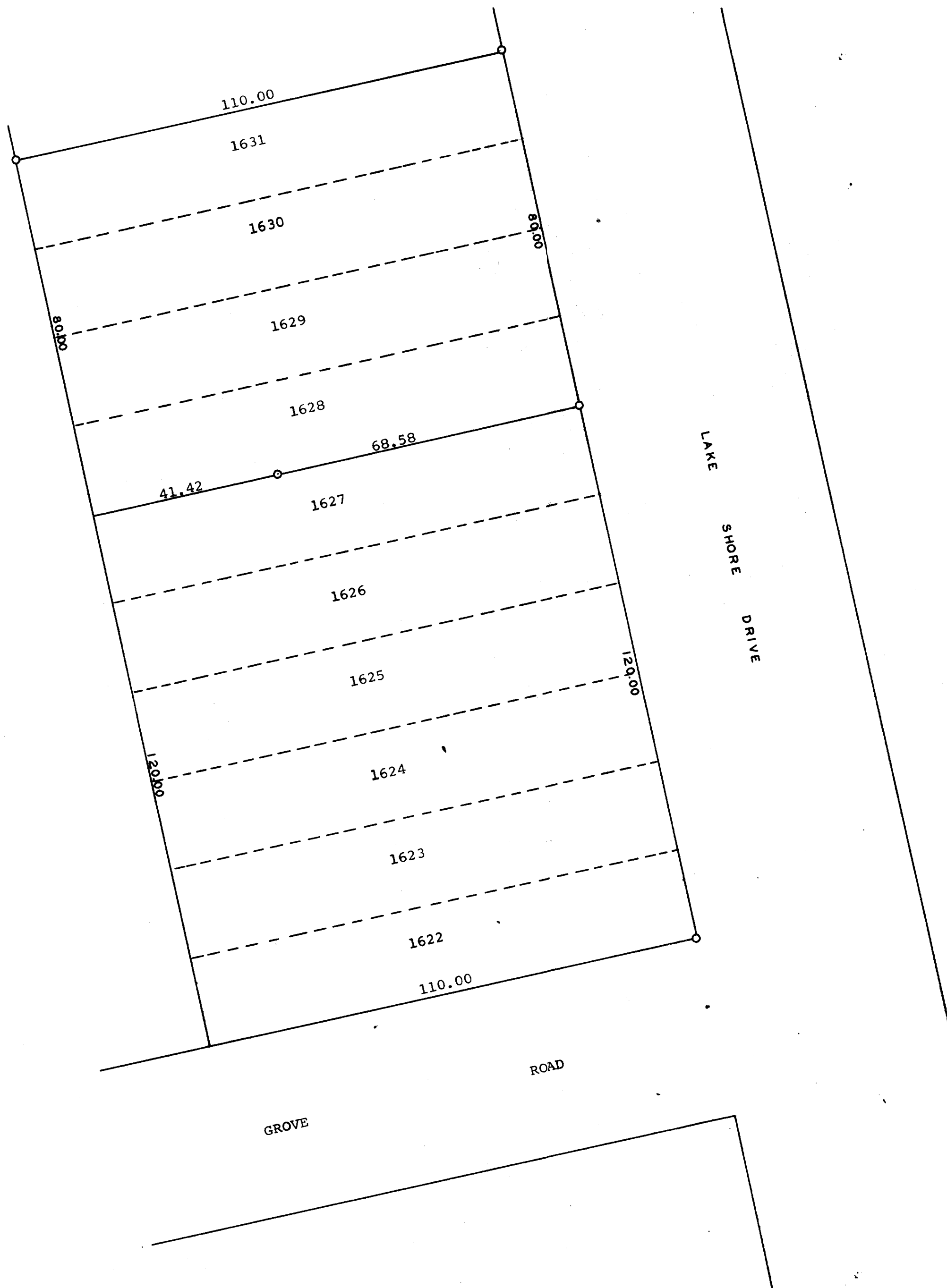


GEORGE T. DUNHAM
SURVEYING & SUBDIVIDING
DELAVER, WISCONSIN



Scale - 1" = 20'
O = Iron Pipe

Plat of survey of Lots 1622-1627 inclusive and Lots
1628-1631 inclusive in Pell Lake Subdivision, Town
of Bloomfield, Walworth County, Wisconsin.
November 18, 1969

George T. Dunham
George T. Dunham, Surveyor