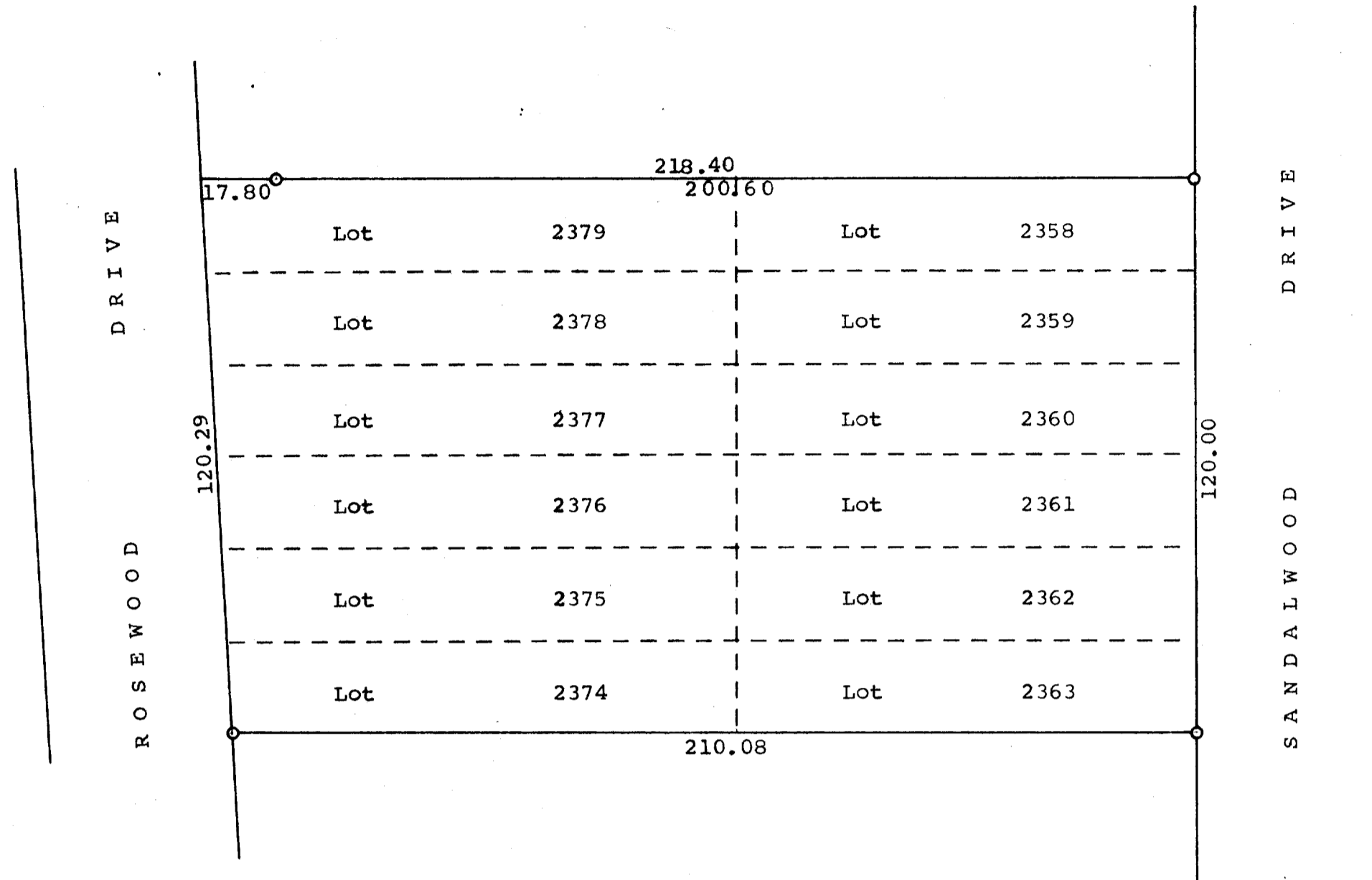


GEORGE T. DUNHAM
 SURVEYING & SUBDIVIDING
 DELAVAN, WISCONSIN



Scale - 1" = 30'
 O = Iron Pipe

Plat of survey of Lots 2358-2363 and
 Lots 2374-2379, Pell Lake Subdivision, T 1 N
 R 18 E, Walworth County, Wisconsin.
 July 31, 1962

George T. Dunham
 George T. Dunham, Surveyor