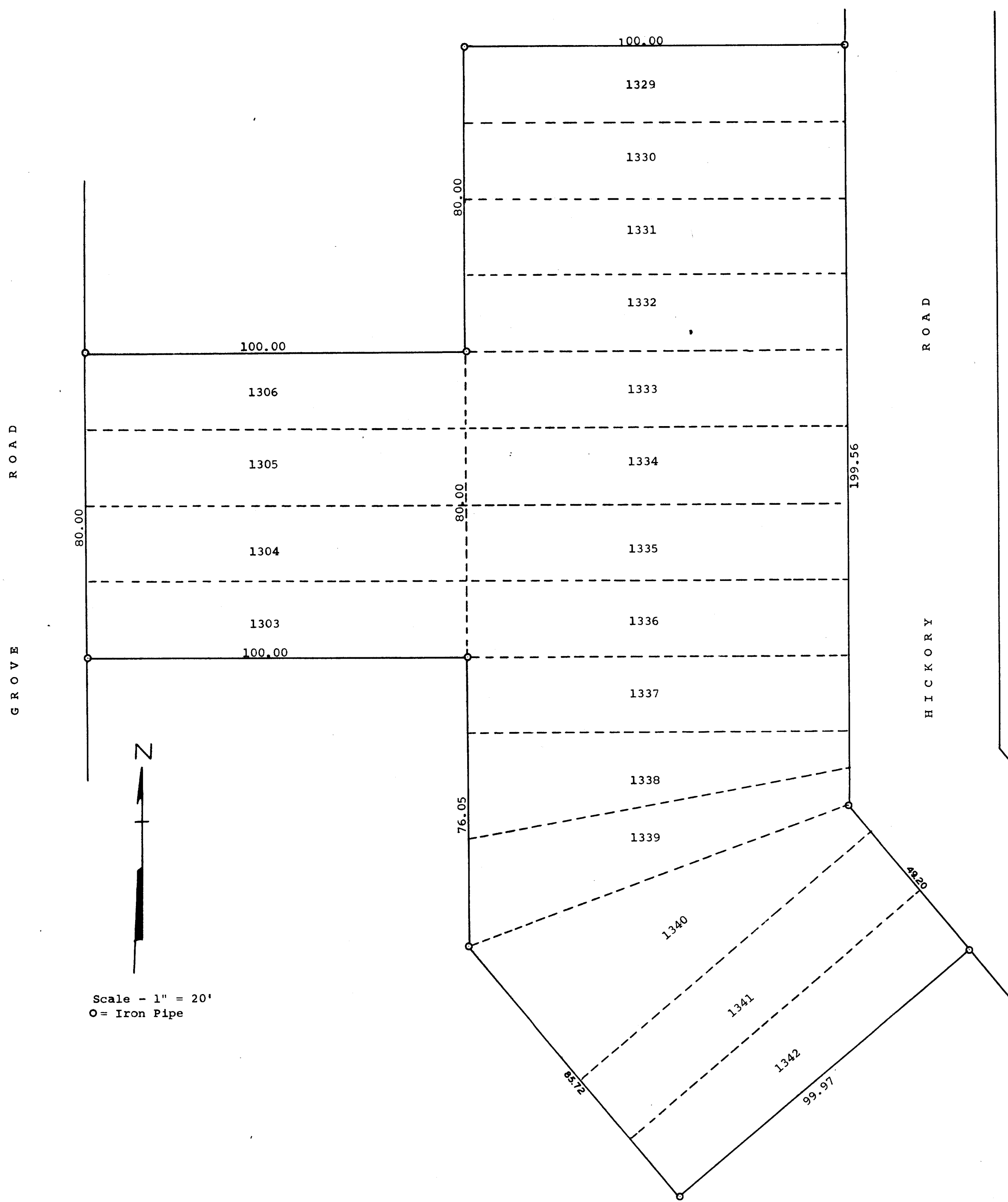


GEORGE T. DUNHAM  
 SURVEYING & SUBDIVIDING  
 DELAVAN, WISCONSIN



Scale - 1" = 20'  
 O = Iron Pipe

Plat of survey of Lots 1303-1306 and 1329-1342 in Pell Lake Subdivisions  
 Town of Bloomfield, Walworth County, Wisconsin.  
 September 17, 1962

*George T. Dunham*  
 George T. Dunham, Surveyor