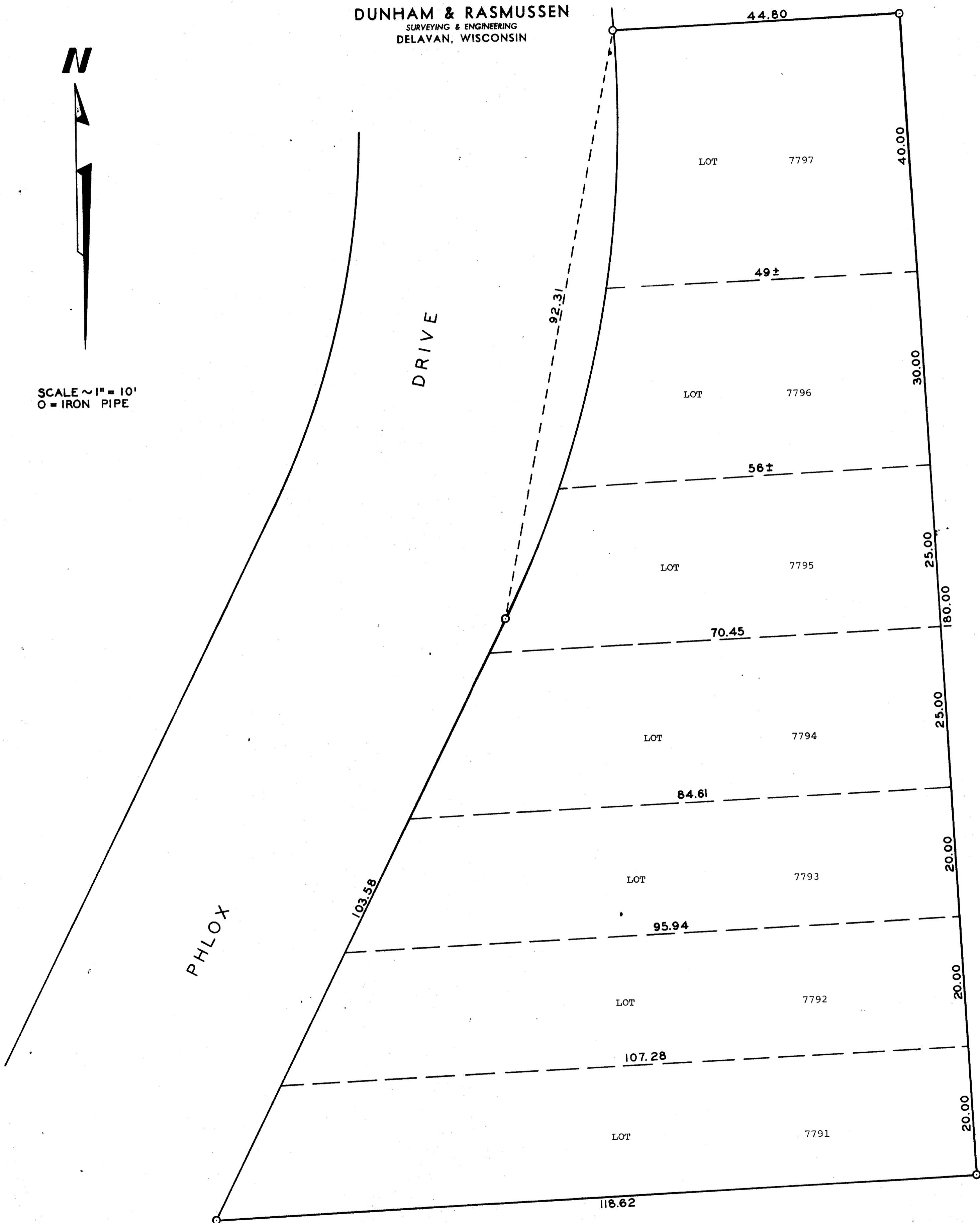


DUNHAM & RASMUSSEN  
SURVEYING & ENGINEERING  
DELAVAN, WISCONSIN

N

SCALE ~ 1" = 10'  
O = IRON PIPE



Plat of survey of Lots 7791 - 7797 of Pell Lake Subdivision located in the Town  
of Bloomfield, Walworth County, Wisconsin.  
August 24, 1961

*George T. Dunham*  
George T. Dunham, Surveyor