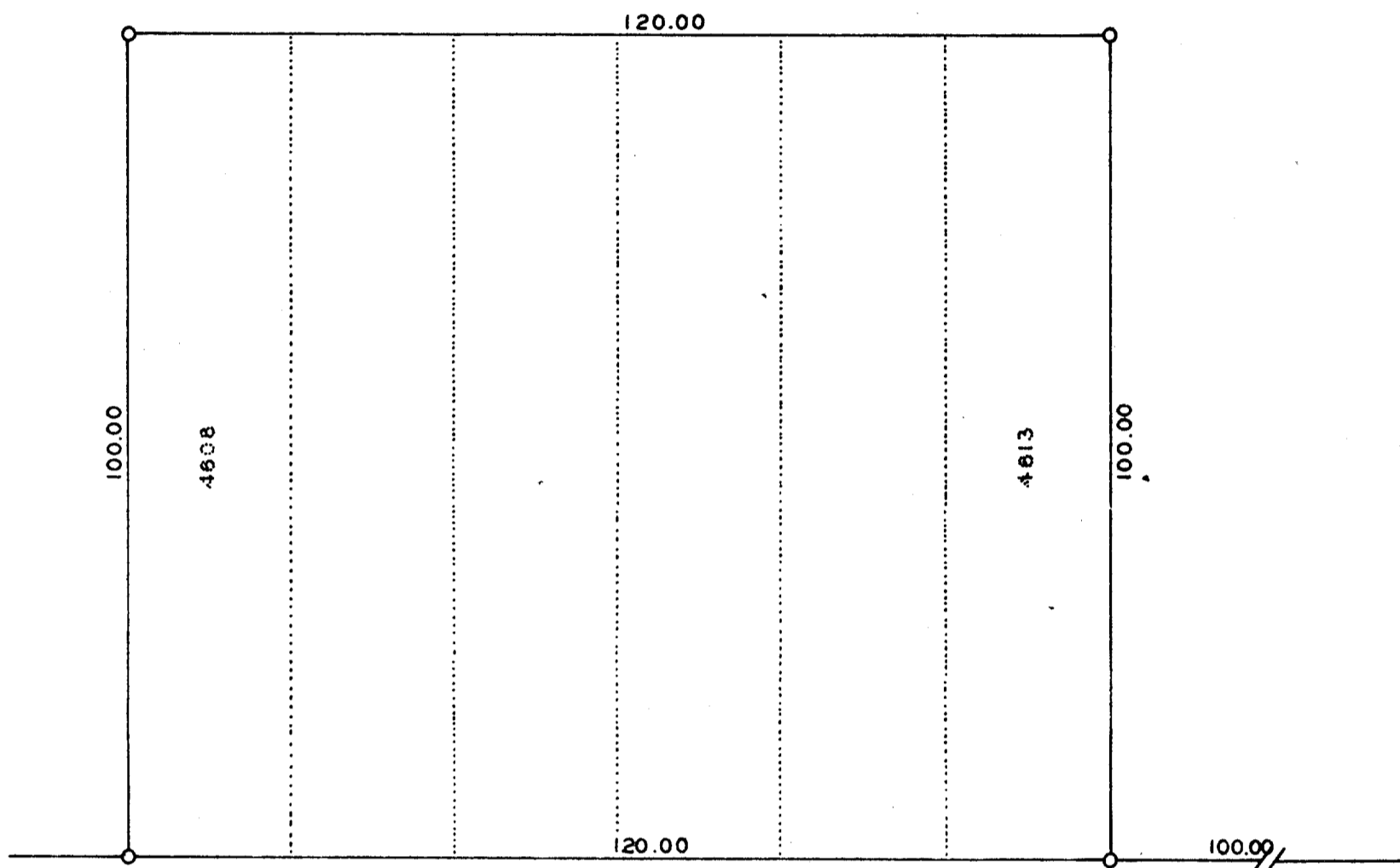


DUNHAM & RASMUSSEN
SURVEYING & ENGINEERING
DELAVER, WISCONSIN



SCALE ~ 1" = 20'
O = IRON PIPE



PRIMROSE

40

ROAD

ROAD

JASMINE

Plat of survey of Lots 4608-4613 of Pell Lake Subdivision,
T 1 N R 18 E, Walworth County, Wisconsin.
July 27, 1961

George A. Dunham
George A. Dunham, Surveyor