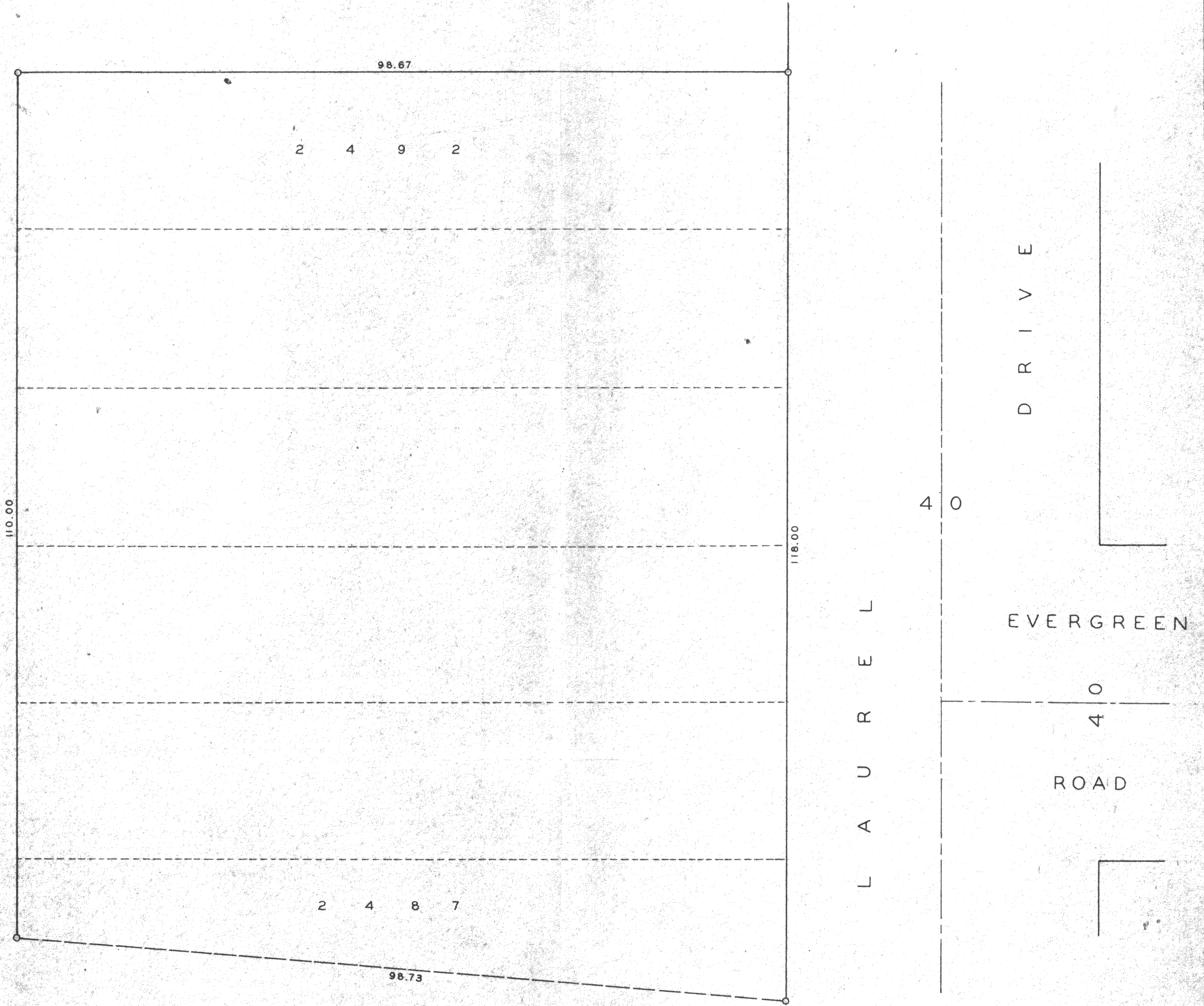


DUNHAM & RASMUSSEN
 SURVEYING & ENGINEERING
 DELAVAN, WISCONSIN



Plat of Survey of Lots 2487 — 2492 inclusive, Pell Lake
 Subdivision, Town of Bloomfield, Walworth County, Wisconsin.
 August 23, 1960

George T. Dunham
 George T. Dunham, Surveyor

SCALE ~ 1" = 10'
 O = IRON PIPE