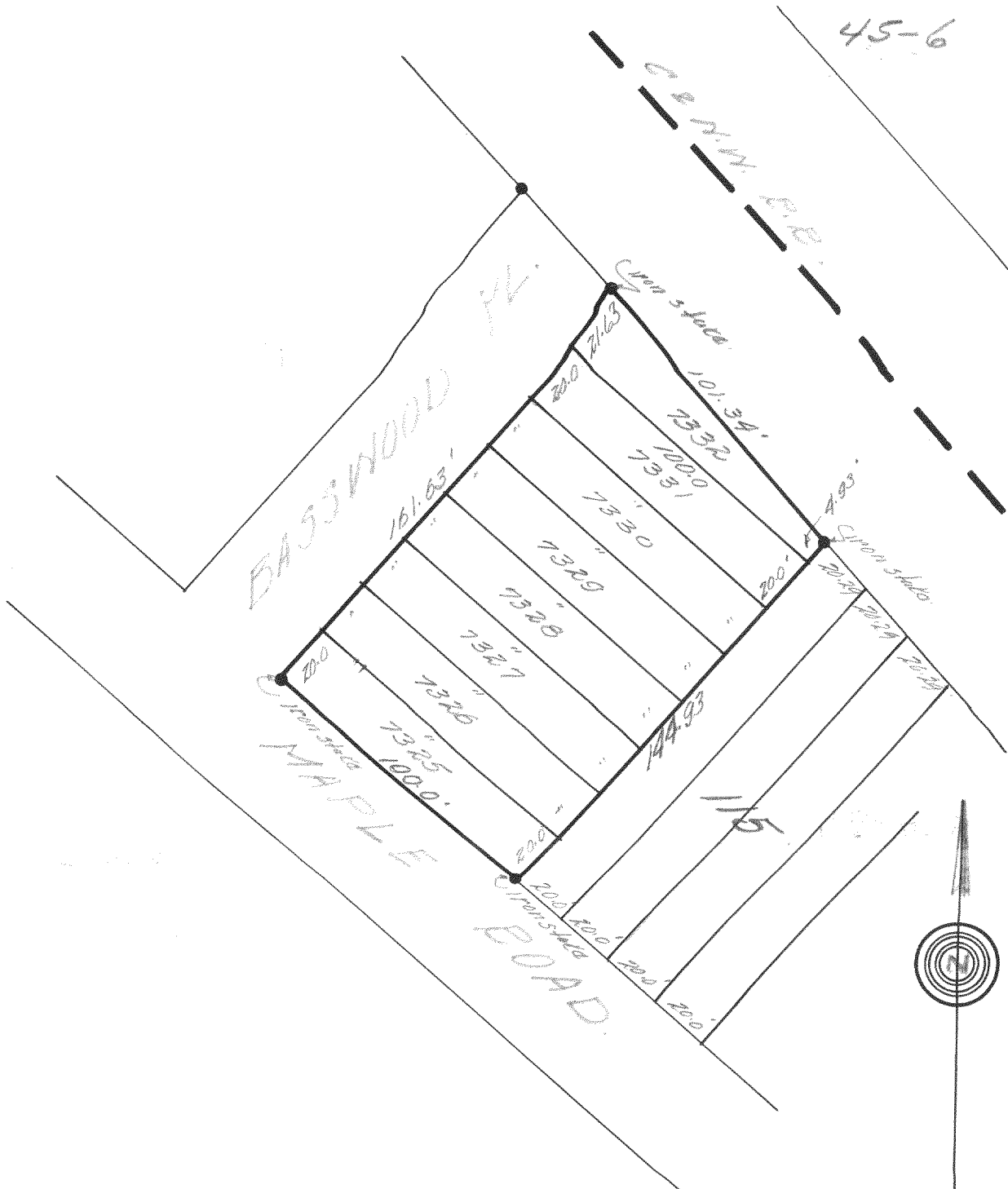


45-6



DESCRIPTION: Lots, 7325 to 7331 inclusive in Block 115 Pell Lake Subdivision of a portion of Bloomfield Township, Walworth County, Wis.
 CERTIFICATE: I, hereby certify that I have on this the 24th day of August surveyed the above described property according to the official records on file in the office of the Recorder of Deeds in and for Walworth County Wisconsin, and find that no encroachments exist.
 SIGNED AND SEALED THIS 25th DAY OF AUGUST 1945.

Joseph M. Biagi
 Joseph M. Biagi.
 Professional Engineer.
 Elkhorn Wisconsin.

118-47B