

HAROLD H. KOLB

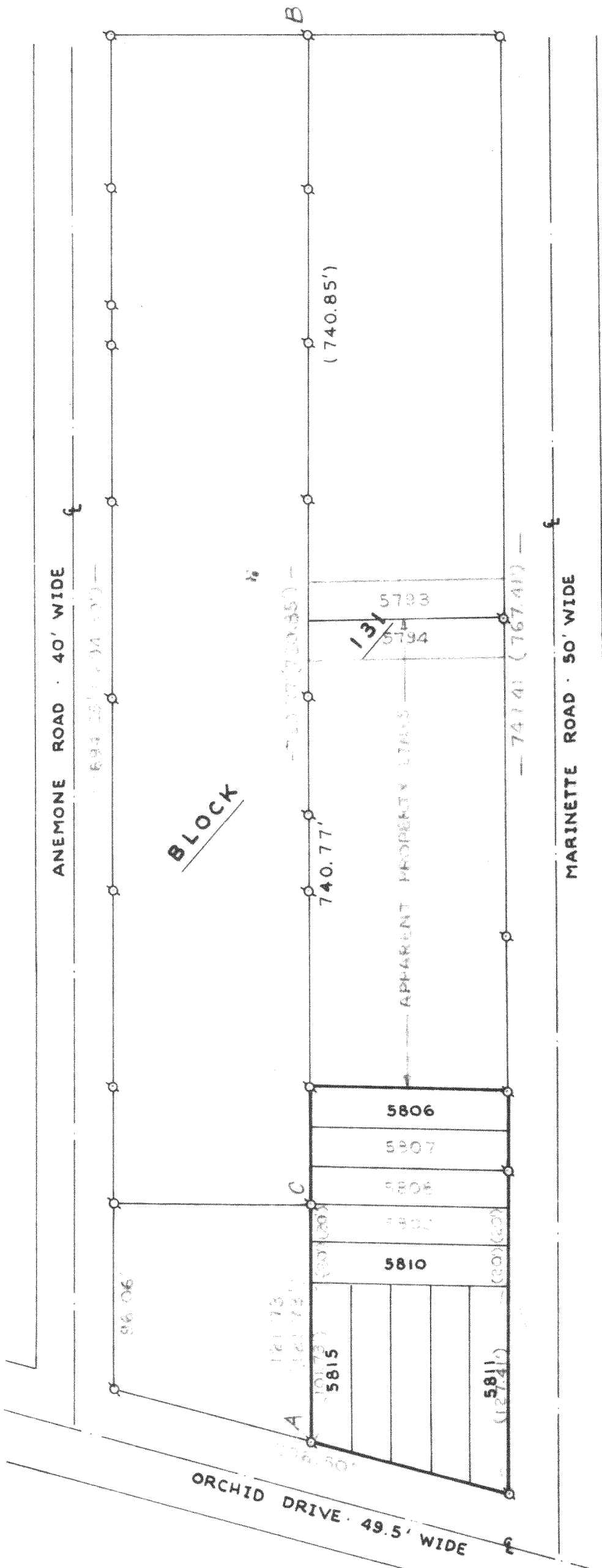
REGISTERED PROFESSIONAL LAND SURVEYOR
LAKE GENEVA, WISCONSIN

PLAT OF SURVEY OF

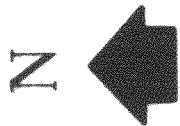
Lots 5806-5815, Block 131, Section 4,
Pell Lake Subdivision, T 1 N, R 18 E,
Walworth County, Wisconsin.

Upon investigation we have found the following:

1. That on the recorded plat of Pell Lake Subdivision, the North side of line AB is shown as 720.85'; that the South side of the same line AB is shown as 740.85'. An obvious error of 20' some place.
2. On the recorded plat of Pell Lake Subdivision we find the North side of line AC recorded as 121.73'. We also find the South side of the same line AC as 141.73'. the 20' error is obviously between A and C.
3. In the original survey of Pell Lake, the only monuments set were at the block corners. We found these. In measuring line AB we find the distance to be 720.77' or less than an inch short of the recorded distance for the North side of this line.
4. We assume the error is the distance south of the line AB.
5. From measuring from the apparent property lines and from iron pipes set since the original subdivision was surveyed, we have concluded that the error falls in the distances shown on Lots 5811 thru 5815, all of which are shown 20' longer than they really are.
6. We have reached the above conclusion from investigation of the original plat as recorded and from extensive field work on the site. And to the best of my ability, I feel the above conclusion is correct.



- LEGEND**
- ⊙ - IRON PIPE FOUND
 - - IRON PIPE PLACED
 - - CONCRETE MONUMENT
 - X - SPIKE
 - () - AS PLATTED



SCALE: 1"=60'

I, HAROLD H. KOLB, DO HEREBY CERTIFY THAT I HAVE SURVEYED THE PROPERTY HEREON DESCRIBED ACCORDING TO THE OFFICIAL RECORDS, AND THAT THE PLAT HEREON IS A CORRECT REPRESENTATION OF THE LOT LINES.

Harold H. Kolb
HAROLD H. KOLB

WISCONSIN REGISTERED LAND SURVEYOR, S-187
DATE June 25, 1979

118-449