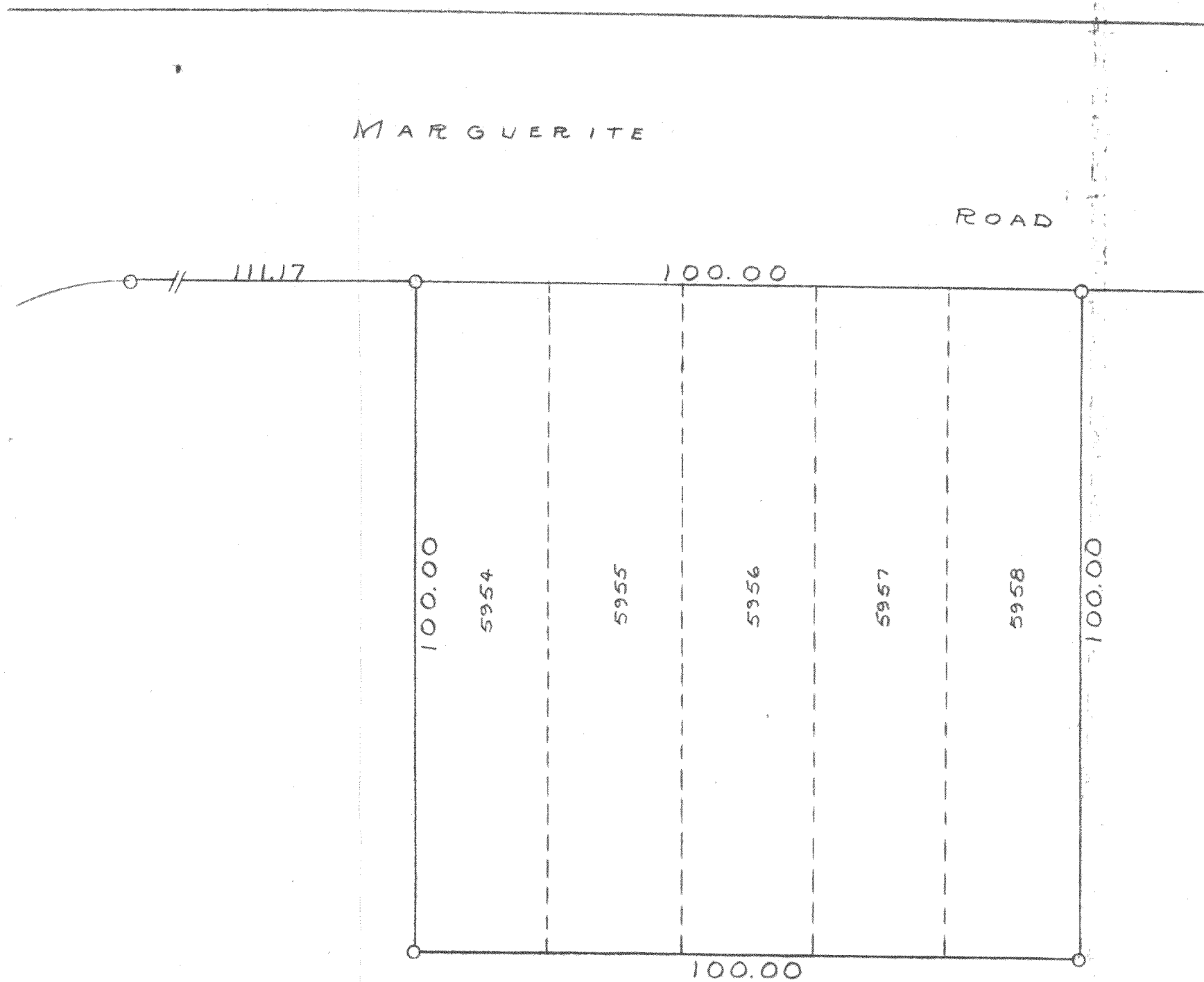


N



SCALE - 1" = 20'  
O = IRON PIPE



PLAT OF SURVEY OF LOTS 5954-5958 INCLUSIVE OF SECTION 4  
OF PELL LAKE SUBDIVISIONS LOCATED IN THE TOWN OF BLOOMFIELD,  
WALWORTH COUNTY, WISCONSIN  
NOV. 6, 1958

118-43

*George T. Dunham*  
GEORGE T. DUNHAM, SURVEYOR  
DELAVAN, WISCONSIN