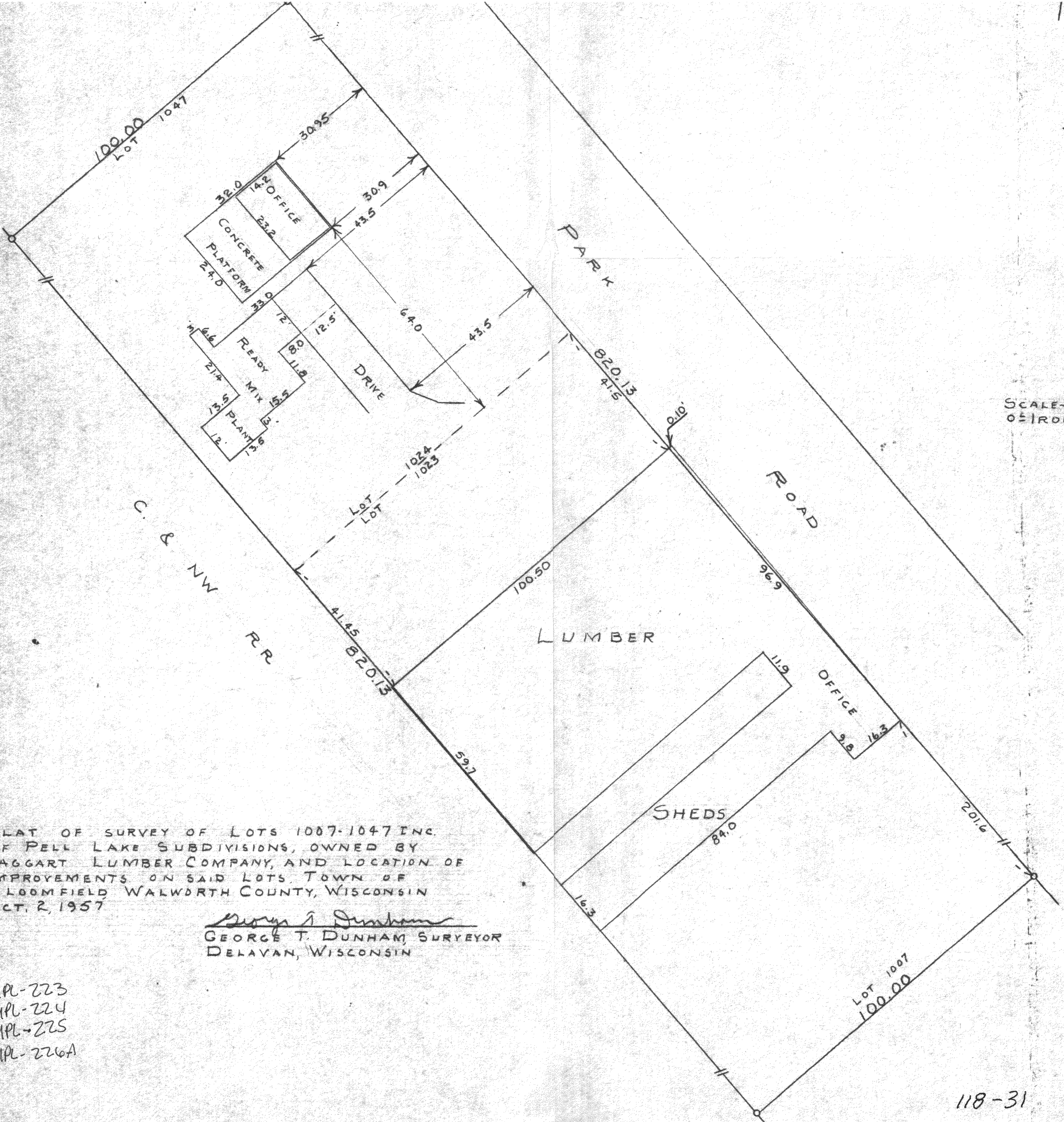


N



SCALE - 1" = 20'
0.5" IRON PIPE



PLAT OF SURVEY OF LOTS 1007-1047 INC.
 OF PELL LAKE SUBDIVISIONS, OWNED BY
 TAGGART LUMBER COMPANY, AND LOCATION OF
 IMPROVEMENTS ON SAID LOTS, TOWN OF
 BLOOMFIELD WALWORTH COUNTY, WISCONSIN
 OCT. 2, 1957

George T. Dunham
 GEORGE T. DUNHAM, SURVEYOR
 DELAVAN, WISCONSIN

MPL-223
 MPL-224
 MPL-225
 MPL-226A