

64 By request of  
made a survey of  
of 8 lots on the

Drive, opp. the West  
No block, but in  
subdivision. Only  
Lake Shore Drive and  
No stakes ~~was~~ had  
group of lots.

We first located the  
Road. by going back  
been made.

Found on N. side @ Syc  
22644 to 22647. wire line

~~was~~ Measured west from  
2 203.54' west and found

and Sycamore. New  
stake sighted on iron  
and checked on stake at

inverted and sighted  
S. E. Cor. Lot 3271.

Sycamore. line passed  
lined Transit on stake  
inter. turned rt. L.S.D.  
for. S. E. Cor. 3269, 71

This located the line  
question are by plat

Fred Yaggart on June 4. We  
The south 4 lots of a group  
West side of Lake Shore  
end of Sycamore road,  
Section 2. Pell Lake  
lots in that section between  
the Lake,  
been set at their little

limits of Sycamore Road  
where improvements had

amore. Road that lots  
were, staked & fenced.

iron stake at S. W. Cor. 2644  
iron stake at N. E. Cor. L. S. D.

set Transit over said N. Cor.  
stake at S. E. Cor. Lot 2647.

S. W. Cor. 2644. (O.K.)  
W. This line should intersect

the same process on N. side  
over S. E. Cor. 3269.

at S. E. Cor. L. S. D. & Poplar  
and measured 50' across L.S.D.

L. S. D. Lines of lots in  
at it is to W. line L. S. D.

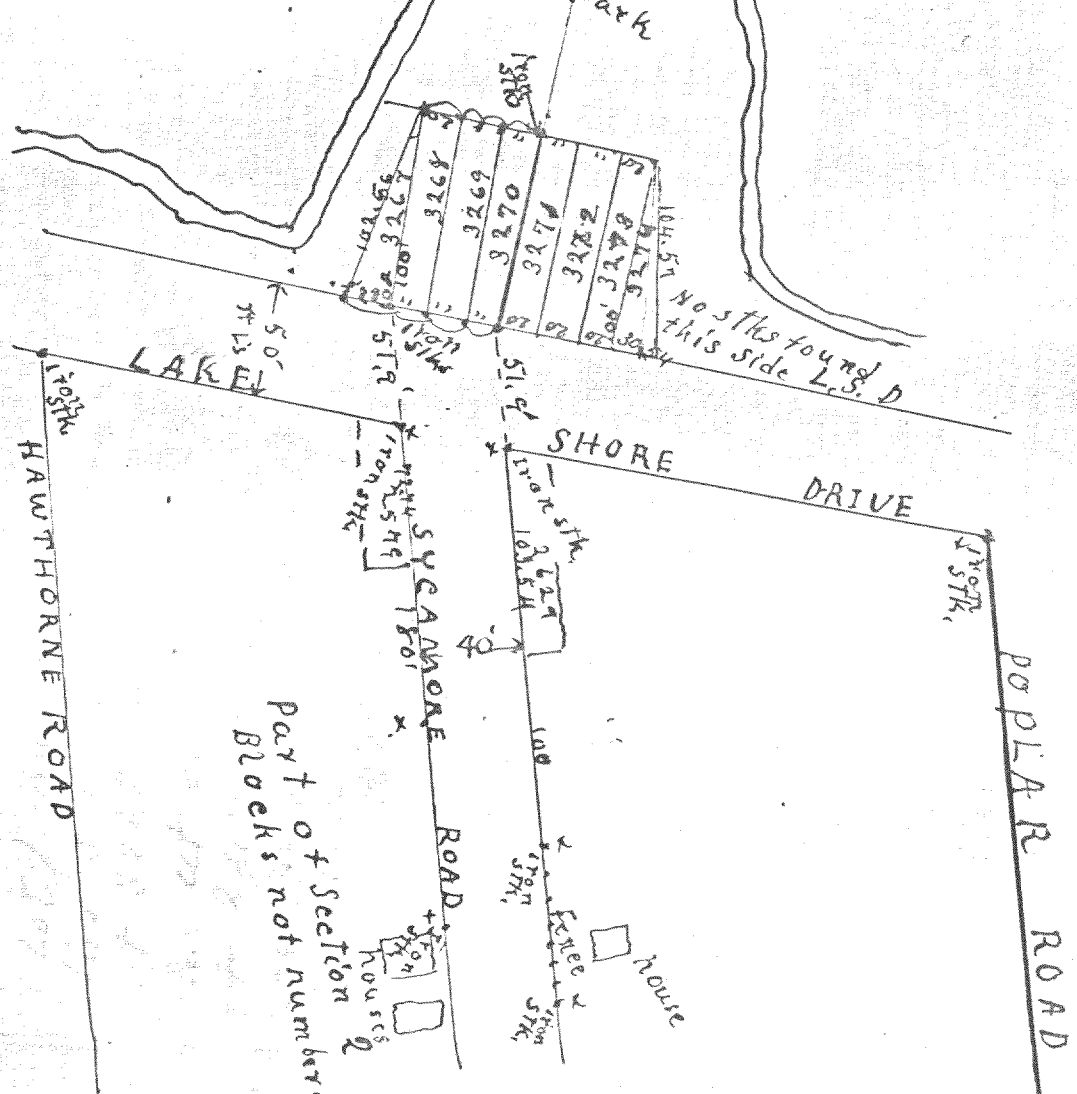
65

Set Transit over  
on another stk.  
measured West 100'  
Cor. 3270.  
Measured S. each 20'  
for each lot from  
line L.S.D. except  
line but runs into  
and has a frontage  
whose S line is 102.56'  
set iron stks at all

~~Stk~~ E. Cor. 3271 sighted  
set on this, turned r.h. L.  
and set iron stk. at N.W.

(3 lots) and checked at 100'  
stk's similar set on West  
lot 3267. which has no W.  
stk. at S.W. Cor. 3268.  
of 22.08' on L.S.D. and  
long. (plat 102.63') (8' inch)  
corners, "all O.K."

118-228 sk  
et transit over  
S.A.S. COR. 3225 1475 1515



be request of Fred Taggart  
 This, to certify that, we have  
 surveyed and staked as shown  
 hereon Lots 3267 to 3270, incl.  
 Second Section, Pell Lake subdivision,  
 County, Bloomfield Twp. Walworth  
 June 4, 1930. J.G. Skeels, surveying co.  
 scale 100' to 1"