

PLAT OF SURVEY

PARCEL A

The East Half of the Northeast Quarter, excepting the West 6 1/5 acres thereof; and the East Half of the Southeast Quarter; and the Southwest Quarter of the Southeast Quarter, all in Section 25, Township 1 North, Range 18 East, Walworth County, Wisconsin, EXCEPTING THEREFROM beginning at the Northeast corner of Section 25, Township 1 North, Range 18 East, of the Fourth Principal Meridian, Township of Bloomfield; run thence North 89 degrees 50 minutes West on the north line of the Northeast Quarter of Section 25, for a distance of 46.68 feet to a point; thence South 44 degrees 51 minutes East, 66.035 feet to a point in the east line of the Northeast Quarter of Section 25; thence North 0 degrees 08 minutes East on the east line of the Northeast Quarter of said Section, 46.68 feet to the Northeast corner of Section 25, and the point of beginning.

PARCEL B

Beginning at the Northeast corner of Section 25, Township 1 North, Range 18 East, of the Fourth Principal Meridian, Township of Bloomfield; run thence North 89 degrees 50 minutes West on the north line of the Northeast Quarter of Section 25, for a distance of 46.68 feet to a point; thence South 44 degrees 51 minutes East, 66.035 feet to a point in the east line of the Northeast Quarter of Section 25; thence North 0 degrees 08 minutes East on the east line of the Northeast Quarter of said Section, 46.68 feet to the Northeast corner of Section 25, and the point of beginning.

PARCEL 1

Being all that part of the Northeast Quarter of Section 25, Township 1 North, Range 18 East, in the Village of Genoa City, Walworth County, Wisconsin, being bounded and described as follows: Beginning at the North Quarter corner of said Section 25; thence South on the west line of the Northeast Quarter of said Section 25, South 00 degrees 11 minutes 55 seconds West, a distance of 990.00 feet to a point; thence South 89 degrees 48 minutes 05 seconds East, a distance of 676.50 feet to a point; thence South 00 degrees 43 minutes 27 seconds West, a distance of 330.00 feet to a point; thence North 89 degrees 43 minutes 27 seconds West, a distance of 16.50 feet to a point; thence South 00 degrees 11 minutes 55 seconds West, a distance of 805.74 feet to a point; thence South 89 degrees 51 minutes 35 seconds East, a distance of 436.60 feet to a point; thence South 00 degrees 11 minutes 55 seconds West, a distance of 533.00 feet to a point on the North Quarter line of said Northeast Quarter of Section 25; thence with said South Quarter line, South 89 degrees 51 minutes 35 seconds East, a distance of 328.18 feet to a point; thence North 00 degrees 11 minutes 55 seconds East, a distance of 2652.66 feet to a point on said north line of the Northeast Quarter of said Section 25; thence with said North Quarter line, North 89 degrees 35 minutes 19 seconds West, a distance of 1423.79 feet to the point of beginning.

PARCEL 2

Being all that part of the Northwest Quarter of the Southeast Quarter of Section 25, Township 1 North, Range 18 East, in the Village of Genoa City, Walworth County, Wisconsin, being bounded and described as follows: Commencing at the center of said Section 25; thence South on the west line of the Southeast Quarter of said Section 25, South 00 degrees 11 minutes 55 seconds West, a distance of 50.00 feet to the point of beginning; thence continuing South 00 degrees 11 minutes 55 seconds West, a distance of 1275.96 feet to a point; thence North 89 degrees 49 minutes 51 seconds East, a distance of 1322.59 feet to a point; thence North 00 degrees 10 minutes 24 seconds East, a distance of 1326.63 feet to a point on the north line of the Southeast Quarter of said Section 25; thence with said north line, North 89 degrees 51 minutes 35 seconds West, a distance of 1076.98 feet to a point; thence South 00 degrees 08 minutes 25 seconds West, a distance of 50.00 feet to a point; thence North 89 degrees 51 minutes 35 seconds West, a distance of 245.10 feet to the point of beginning.

PARCEL 3

Being all that part of the Northeast Quarter and Southeast Quarter of Section 36, Township 1 North, Range 18 East, in the Township of Bloomfield, bounded and described as follows: Beginning at the center of said Section 36; thence with the west line of the Northeast Quarter of said Section 36, North 00 degrees 00 minutes 00 seconds East, a distance of 135.30 feet to a point; thence North 89 degrees 57 minutes 47 seconds East, a distance of 208.57 feet to a point; thence North 00 degrees 01 minutes 05 seconds East, a distance of 626.05 feet to a point; thence South 89 degrees 59 minutes 31 seconds West, a distance of 208.76 feet to a point on the west line of said Northeast Quarter; thence with said west line, North 00 degrees 00 minutes 00 seconds East, a distance of 1684.79 feet to a point; thence South 89 degrees 48 minutes 16 seconds East, a distance of 208.46 feet to a point; thence North 00 degrees 07 minutes 04 seconds East, a distance of 208.97 feet to a point on the north line of the Northeast Quarter; thence with said north line, South 89 degrees 47 minutes 57 seconds East, a distance of 1114.25 feet to a point; thence South 00 degrees 00 minutes 43 seconds East, a distance of 1043.25 feet to a point; thence North 89 degrees 31 minutes 11 seconds West, a distance of 164.59 feet to the point; thence South 00 degrees 25 minutes 37 seconds East, a distance of 274.80 feet to a point; thence South 89 degrees 30 minutes 40 seconds East, a distance of 162.60 feet to a point; thence South 00 degrees 00 minutes 43 seconds East, a distance of 8.15 feet to a point; thence North 89 degrees 37 minutes 57 seconds West, a distance of 182.90 feet to a point; thence South 00 degrees 25 minutes 06 seconds East, a distance of 242.98 feet to a point; thence South 89 degrees 37 minutes 22 seconds East, a distance of 181.32 feet to a point; thence South 00 degrees 00 minutes 43 seconds East, a distance of 1085.83 feet to a point; thence South 00 degrees 04 minutes 40 seconds East, a distance of 826.77 feet to a point; thence North 89 degrees 23 minutes 40 seconds West, a distance of 382.35 feet to a point; thence South 00 degrees 14 minutes 32 seconds East, a distance of 467.64 feet to a point on a curve being the Northernly right-of-way of South Road; thence with said curve to the left, a distance of 110.65 feet, said curve having a radius of 781.20 feet, a chord that bears South 89 degrees 04 minutes 25 seconds West for a length of 110.55 feet to a point; thence North 89 degrees 44 minutes 35 seconds West, a distance of 353.57 feet to a point; thence North 00 degrees 00 minutes 19 seconds East, a distance of 417.98 feet to a point; thence North 89 degrees 47 minutes 39 seconds West, a distance of 421.41 feet to a point; thence North 00 degrees 21 minutes 31 seconds East, a distance of 94.43 feet to a point; thence South 89 degrees 59 minutes 33 seconds West, a distance of 66.96 feet to a point on the west line of the Southeast Quarter of said Section 36; thence with said west line, North 00 degrees 00 minutes 22 seconds East, a distance of 818.79 feet to the point of beginning. Said parcel containing 105.79 acres, more or less.

PARCEL 4

All that part of the Southeast Quarter of the Northwest Quarter and the Northeast Quarter of the Southwest Quarter of Section 36, Township 1 North, Range 18 East, lying easterly of U.S.H. "12", EXCEPTING THEREFROM land conveyed by the following 3 deeds: (1) Warranty Deed recorded in Volume 432 of Deeds, page 81 as Document No. 437130; (2) Warranty Deed recorded in Volume 181 of Deeds, page 105 as Document No. 489867; and (3) Warranty Deed recorded in Volume 644 of Deeds on page 637 as Document No. 588705.

PARCEL 5

The Northeast Quarter of the Northeast Quarter of Section 36, Township 1 North, Range 18 East, Walworth County, Wisconsin.

PARCEL 6

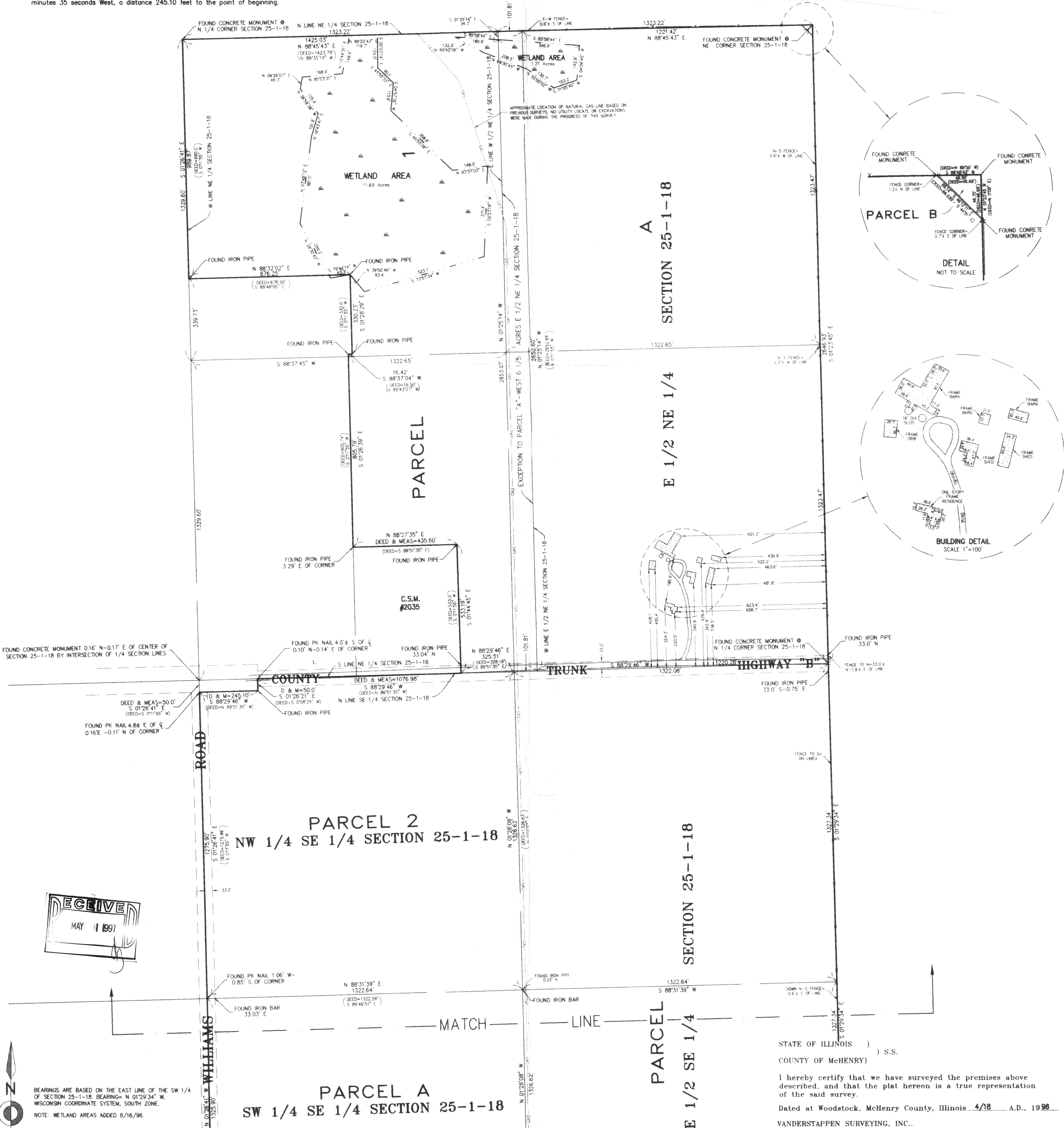
Being Lot 1 of Certified Survey Map 2036 in the Southeast Quarter of Section 36, Township 1 North, Range 18 East, Village of Genoa City, Walworth County, Wisconsin, being more completely described as follows: Commencing at the Southwest corner of the Northwest Quarter of the Southeast Quarter of said Section 36; thence South 89 degrees 44 minutes 19 seconds East, a distance of 281.04 feet to the point of beginning; thence from the point of beginning, North 00 degrees 00 minutes 21 seconds East, 211.77 feet to a point; thence South 89 degrees 58 minutes 54 seconds West, a distance of 4.26 feet to a point; thence North 00 degrees 19 minutes 37 seconds East, a distance of 206.01 feet to a point; thence South 89 degrees 47 minutes 39 seconds East, a distance of 209.86 feet to a point; thence South 00 degrees 00 minutes 19 seconds West, a distance of 417.98 feet to a point; thence North 89 degrees 44 minutes 19 seconds East, a distance of 206.75 feet to the point of beginning. Also with a 66 foot wide easement described as follows: Beginning at the Northwest corner of the above described lot 1; thence North 89 degrees 47 minutes 25 seconds West, a distance of 211.56 feet to a point; thence North 0 degrees 21 minutes 27 seconds East, a distance of 94.43 feet to a point; thence South 89 degrees 59 minutes 22 seconds West, a distance of 66.00 feet to a point; thence North 00 degrees 00 minutes 22 seconds East, a distance of 66.00 feet to a point; thence North 89 degrees 59 minutes 22 seconds East, a distance of 132.84 feet to a point; thence South 0 degrees 12 minutes 56 seconds East, a distance of 94.30 feet to a point; thence South 89 degrees 47 minutes 25 seconds East, a distance of 214.14 feet to a point; thence South 0 degrees 12 minutes 56 seconds East, a distance of 66.37 feet to a point; thence North 89 degrees 47 minutes 55 seconds West, a distance of 69.67 feet to the point of beginning.

PARCEL 7

Being Lot 1 of C.S.M. #540 in the Northeast Quarter of Section 36, Township 1 North, Range 18 East, Village of Genoa City, Walworth County, Wisconsin, being more completely described as follows: Commencing at the North Quarter corner of said Section 36; thence with the north line of the Northeast Quarter of said Section 36, South 89 degrees 47 minutes 57 seconds East, a distance of 1323.15 feet to a point; thence South 00 degrees 00 minutes 43 seconds East, a distance of 1043.25 feet to the point of beginning; thence from the point of beginning, South 00 degrees 00 minutes 43 seconds East, a distance of 274.80 feet to a point; thence North 89 degrees 30 minutes 40 seconds West, a distance of 162.60 feet to a point; thence North 00 degrees 25 minutes 37 seconds East, a distance of 242.98 feet to a point; thence South 89 degrees 31 minutes 11 seconds East, a distance of 164.59 feet to the point of beginning. Parcel being subject to the rights of the public for the use of Wild Rose Road.

PARCEL 8

Being part of the Southwest Quarter of the Northeast Quarter of Section 36, Township 1 North, Range 18 East, Village of Genoa City, Walworth County, Wisconsin, being more completely described as follows: Commencing at the North Quarter corner of said Section 36; thence with the north line of the Northeast Quarter of said Section 36, South 89 degrees 47 minutes 57 seconds East, a distance of 1323.15 feet to a point; thence South 00 degrees 00 minutes 43 seconds East, a distance of 1326.20 feet to the point of beginning; thence from the point of beginning, South 00 degrees 00 minutes 43 seconds East, a distance of 243.00 feet to a point; thence North 89 degrees 37 minutes 22 seconds West, a distance of 181.32 feet to a point; thence North 00 degrees 23 minutes 06 seconds East, a distance of 242.98 feet to a point; thence South 89 degrees 37 minutes 37 seconds East, a distance of 182.90 feet to the point of beginning. Parcel being subject to the rights of the public for the use of Wild Rose Road.



BEARINGS ARE BASED ON THE EAST LINE OF THE SW 1/4 OF SECTION 25-1-18, BEARING= N 01°29'34\"

NOTE: Only those Building Line Restrictions or Easements shown on a Recorded Subdivision Plat are shown hereon unless the description ordered to be surveyed contains a proper description of the required building lines or easements.

Compare your description and site markings with this plat and AT ONCE report any discrepancies which you may find.

Wisconsin Registered Land Surveyor, No. S-1777

PLAT OF SURVEY

PARCEL 2
NW 1/4 SE 1/4 SECTION 25-1-18

PARCEL A
SW 1/4 SE 1/4 SECTION 25-1-18

PARCEL
E 1/2 SE 1/4
SECTION
25-1-18

PARCEL 5
NW 1/4 NE 1/4 SECTION 36-1-18
NE 1/4 NE 1/4 SECTION 36-1-18

PARCEL 7

PARCEL 8

SW 1/4 NE 1/4
SECTION 36-1-18

NW 1/4 SE 1/4
SECTION 36-1-18

PARCEL

PARCEL

TOTAL AREA=466.992 ACRES
20,342,184 SQ FT

BEARINGS ARE BASED ON THE EAST LINE OF THE SW 1/4
OF SECTION 25-1-18. BEARING= N 01°29'54" W.
WISCONSIN COORDINATE SYSTEM, SOUTH ZONE.

NOTE: Only those Building Line Restrictions or Easements shown on a Recorded Subdivision Plat
are shown hereon unless the description ordered to be surveyed contains a proper description of
the required building lines or easements.

Compare your description and site markings with this plat and AT ONCE report any discrepancies
which you may find.

STATE OF ILLINOIS)) S.S.
COUNTY OF McHENRY)

I hereby certify that we have surveyed the premises above
described, and that the plat hereon is a true representation
of the said survey.

Dated at Woodstock, McHenry County, Illinois 4/18 A.D., 1996

VANDERSTAPPEN SURVEYING, INC..

Wisconsin Registered Land Surveyor, No. S-1777

TOPOGRAPHIC SURVEY

PARCEL 2
NW 1/4 SE 1/4 SECTION 25-1-18

PARCEL A
SW 1/4 SE 1/4 SECTION 25-1-18

PARCEL
E 1/2 SE 1/4
SECTION 25-1-18

NW 1/4 NE 1/4 SECTION 36-1-18

NE 1/4 NE 1/4 SECTION 36-1-18

PARCEL 7

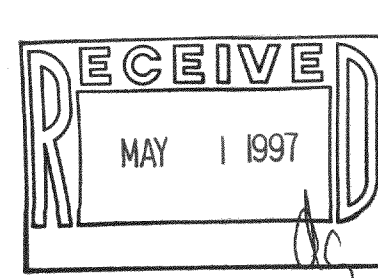
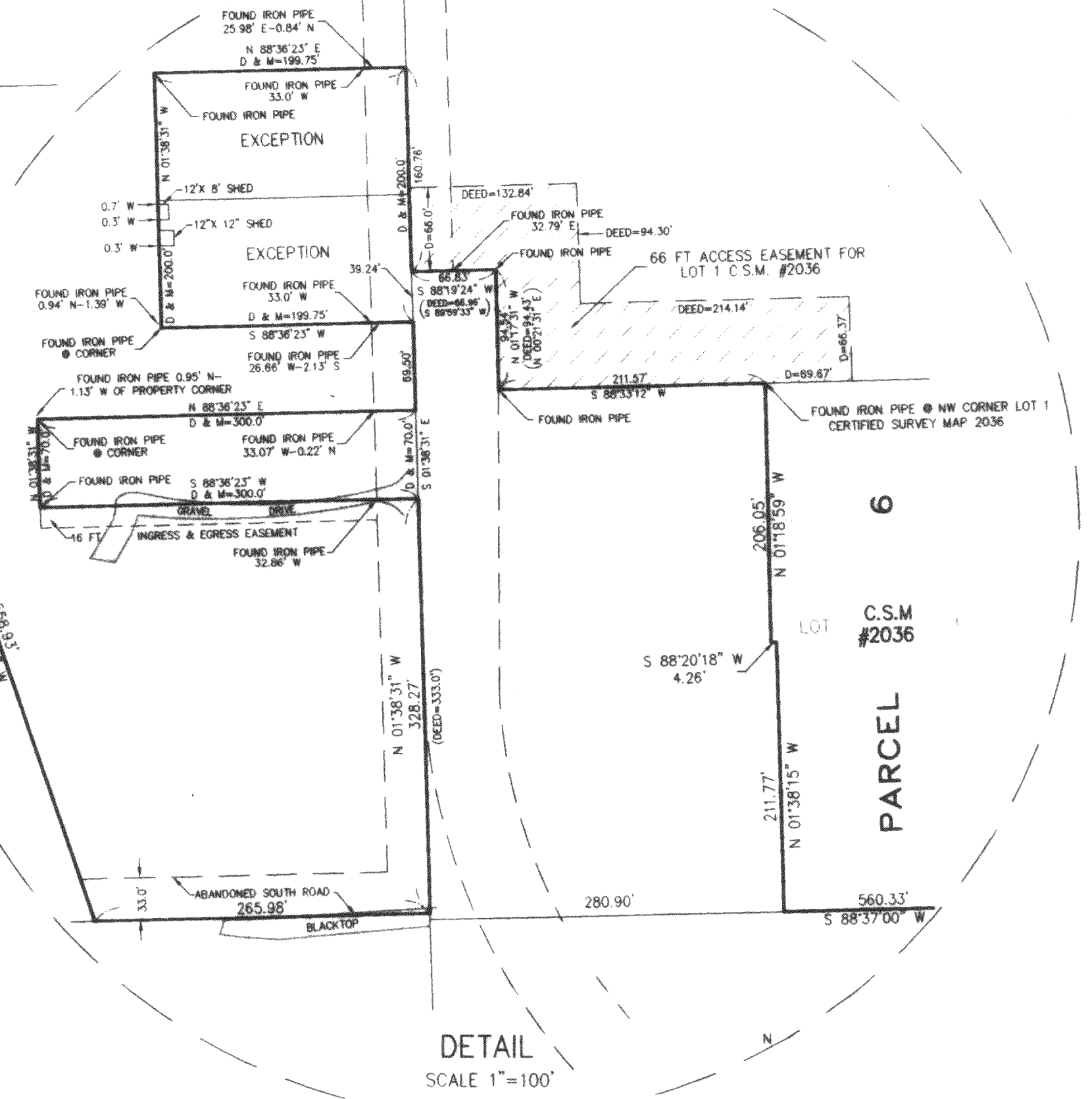
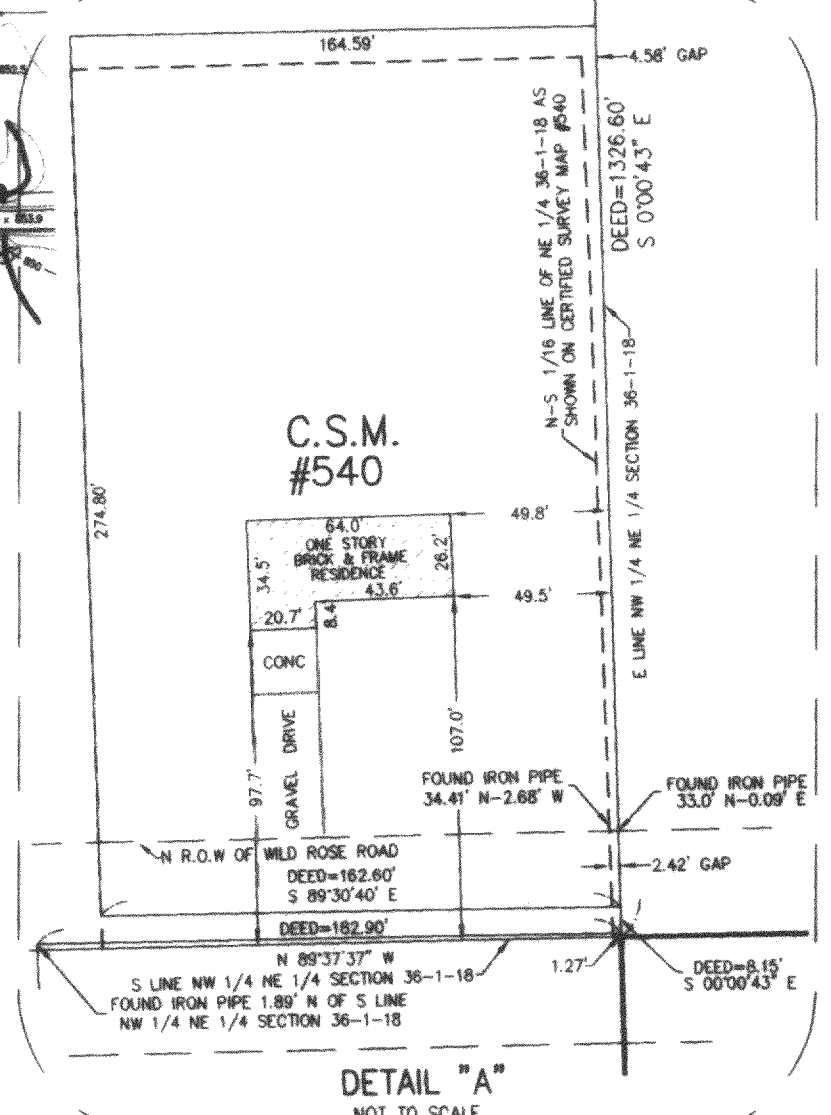
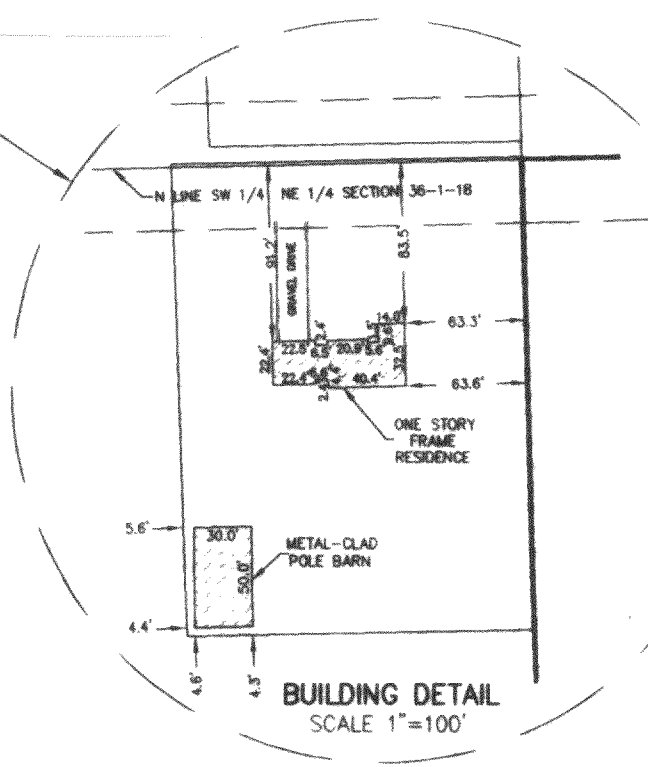
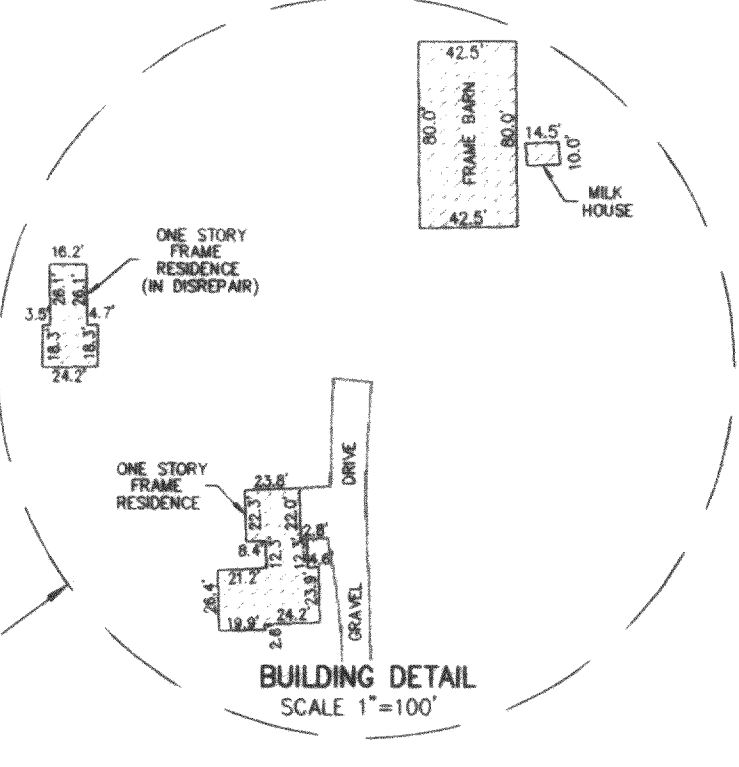
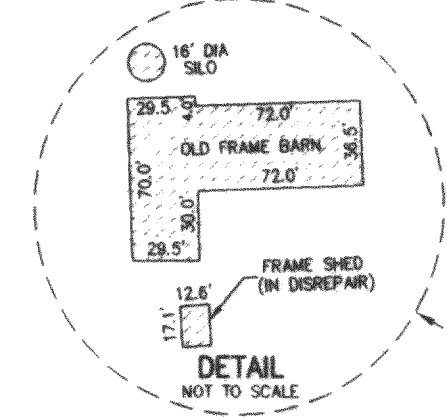
PARCEL 8

SW 1/4 NE 1/4
SECTION 36-1-18

NW 1/4 SE 1/4
SECTION 36-1-18

PARCEL

PARCEL 6



TOTAL AREA=466.992 ACRES
20,342,184 SQ FT

BEARINGS ARE BASED ON THE EAST LINE OF THE SW 1/4
OF SECTION 25-1-18. BEARING= N 01°29'34" W
WISCONSIN COORDINATE SYSTEM, SOUTH ZONE.

NOTE: Only those Building Line Restrictions or Easements shown on a Recorded Subdivision Plat
are shown hereon unless the description ordered to be surveyed contains a proper description of
the required building lines or easements.

Compare your description and site markings with this plat and AT ONCE report any discrepancies
which you may find.

Dated at Woodstock, McHenry County, Illinois, 6/3 A.D., 19 96
VANDERSTAPPEN SURVEYING, INC.

Wisconsin Registered Land Surveyor, No. S-1777

CLIENT: DOUGLAS ADAMS
DRAWN BY: ST CHK'D BY: WJV
SCALE: 1"=200' SEC. 25.36 T. 1 R. 18 E.
JOB NO.: 9601327 PLD. BK. PAGE
ALL DISTANCES SHOWN IN FEET AND DECIMAL PARTS THEREOF
CORRECTED TO 68° F.

TOPOGRAPHIC SURVEY

PARCEL A

The East Half of the Northeast Quarter, excepting the West 6 1/5 acres thereof, and the East Half of the Southeast Quarter, and the Southwest Quarter of the Southeast Quarter, all in Section 25, Township 1 North, Range 18 East, Walworth County, Wisconsin.
EXCEPTING THEREFROM beginning at the Northeast corner of Section 25, Township 1 North, Range 18 East, of the Fourth Principal Meridian, Township of Bloomfield; run thence North 89 degrees 50 minutes West on the north line of the Northeast Quarter of Section 25, for a distance of 46.68 feet to a point; thence South 44 degrees 51 minutes East, 66.035 feet to a point in the east line of the Northeast Quarter of Section 25, thence North 0 degrees 08 minutes East on the east line of the Northeast Quarter of said Section, 46.68 feet to the Northeast corner of Section 25, and the point of beginning.

PARCEL B

Beginning at the Northeast corner of Section 25, Township 1 North, Range 18, East of the Fourth Principal Meridian, Township of Bloomfield; run thence North 89 degrees 50 minutes West on the north line of the Northeast Quarter of Section 25, for a distance of 46.68 feet to a point; thence South 44 degrees 51 minutes East, 66.035 feet to a point in the east line of the Northeast Quarter of Section 25; thence North 0 degrees 08 minutes East on the east line of the Northeast Quarter of said Section, 46.68 feet to the Northeast corner of Section 25, and the point of beginning.

PARCEL 1

Being all that part of the Northeast Quarter of Section 25, Township 1 North, Range 18 East, in the Village of Genoa City, Walworth County, Wisconsin, being bounded and described as follows: Beginning at the North Quarter corner of said Section 25; thence South on the west line of the Northeast Quarter of said Section 25, South 00 degrees 11 minutes 55 seconds West, a distance of 990.00 feet to a point; thence South 89 degrees 48 minutes 05 seconds East, a distance of 676.50 feet to a point; thence South 00 degrees 11 minutes 55 seconds West, a distance of 330.00 feet to a point; thence North 89 degrees 43 minutes 27 seconds West, a distance of 18.50 feet to a point; thence South 00 degrees 11 minutes 55 seconds West, a distance of 805.74 feet to a point; thence South 89 degrees 51 minutes 35 seconds East, a distance of 435.60 feet to a point; thence South 00 degrees 11 minutes 55 seconds West, a distance of 533.00 feet to a point on the South Quarter line of said Northeast Quarter of Section 25; thence with said South Quarter line, South 89 degrees 51 minutes 35 seconds East, a distance of 328.18 feet to a point; thence North 00 degrees 11 minutes 55 seconds East, a distance of 2852.66 feet to a point on said north line of the Northeast Quarter of said Section 25, thence with said North Quarter line, North 89 degrees 35 minutes 19 seconds West, a distance of 1423.79 feet to the point of beginning.

PARCEL 2

Being all that part of the Northwest Quarter of the Southeast Quarter of Section 25, Township 1 North, Range 18 East, in the Village of Genoa City, Walworth County, Wisconsin, being bounded and described as follows: Commencing at the center of said Section 25; thence South on the west line of the Southeast Quarter of said Section 25, South 00 degrees 11 minutes 55 seconds West, a distance of 50.00 feet to the point of beginning; thence continuing South 00 degrees 11 minutes 55 seconds West, a distance of 1275.96 feet to a point; thence North 00 degrees 49 minutes 51 seconds East, a distance of 1322.59 feet to a point; thence North 00 degrees 10 minutes 24 seconds East, a distance of 1326.63 feet to a point on the north line of the Southeast Quarter of said Section 25; thence with said north line, North 89 degrees 51 minutes 35 seconds West, a distance of 1076.98 feet to a point; thence South 00 degrees 08 minutes 25 seconds West, a distance of 50.00 feet to a point; thence North 89 degrees 51 minutes 35 seconds West, a distance of 245.10 feet to the point of beginning.

PARCEL 3

Being all that part of the Northeast Quarter and Southeast Quarter of Section 36, Township 1 North, Range 18 East, in the Township of Bloomfield, bounded and described as follows: Beginning at the center of said Section 36; thence with the west line of the Northeast Quarter of said Section 36, North 00 degrees 00 minutes 00 seconds East, a distance of 135.30 feet to a point; thence North 89 degrees 57 minutes 47 seconds East, a distance of 208.57 feet to a point; thence North 00 degrees 01 minutes 05 seconds East, a distance of 626.05 feet to a point; thence South 89 degrees 59 minutes 31 seconds West, a distance of 208.76 feet to a point on the west line of said Northeast Quarter; thence with said west line, North 00 degrees 00 minutes 00 seconds East, a distance of 1684.79 feet to a point; thence South 89 degrees 48 minutes 16 seconds East, a distance of 208.46 feet to a point; thence North 00 degrees 07 minutes 04 seconds East, a distance of 208.97 feet to a point on the north line of the Northeast Quarter; thence with said north line, South 89 degrees 47 minutes 57 seconds East, a distance of 1114.25 feet to a point; thence South 00 degrees 00 minutes 43 seconds East, a distance of 1043.25 feet to a point; thence North 89 degrees 31 minutes 11 seconds West, a distance of 164.59 feet to the point; thence South 00 degrees 23 minutes 06 seconds East, a distance of 274.80 feet to a point; thence South 89 degrees 30 minutes 40 seconds East, a distance of 162.60 feet to a point; thence South 00 degrees 00 minutes 43 seconds East, a distance of 8.15 feet to a point; thence North 89 degrees 37 minutes 57 seconds West, a distance of 182.90 feet to a point; thence South 00 degrees 23 minutes 06 seconds East, a distance of 242.98 feet to a point; thence South 89 degrees 37 minutes 22 seconds East, a distance of 181.32 feet to a point; thence South 00 degrees 00 minutes 43 seconds East, a distance of 1085.83 feet to a point; thence South 00 degrees 04 minutes 40 seconds East, a distance of 628.77 feet to a point; thence North 89 degrees 23 minutes 40 seconds West, a distance of 369.35 feet to a point; thence South 00 degrees 14 minutes 32 seconds East, a distance of 467.64 feet to a point on a curve being the Northerly right-of-way of South Road; thence with said curve to the left, a distance of 110.65 feet, said curve having a radius of 781.20 feet, a chord that bears South 69 degrees 04 minutes 25 seconds West for a length of 110.55 feet to a point; thence North 89 degrees 44 minutes 35 seconds West, a distance of 353.57 feet to a point; thence North 00 degrees 00 minutes 19 seconds East, a distance of 417.98 feet to a point; thence North 89 degrees 47 minutes 39 seconds West, a distance of 421.41 feet to a point; thence North 00 degrees 21 minutes 31 seconds East, a distance of 94.43 feet to a point; thence South 89 degrees 59 minutes 33 seconds West, a distance of 66.96 feet to a point on the west line of the Southeast Quarter of said Section 36; thence with said west line, North 00 degrees 00 minutes 22 seconds East, a distance of 818.79 feet to the point of beginning. Said parcel containing 105.79 acres, more or less.

PARCEL 4

All that part of the Southeast Quarter of the Northwest Quarter and the Northeast Quarter of the Southwest Quarter of Section 36, Township 1 North, Range 18 East, lying easterly of U.S.H. "12", EXCEPTING THEREFROM land conveyed by the following 3 deeds:
(1) Warranty Deed recorded in Volume 432 of Deeds, page 81 as Document No. 437130;
(2) Warranty Deed recorded in Volume 181 of Deeds, page 105 as Document No. 469867 and
(3) Warranty Deed recorded in Volume 644 of Deeds on page 637 as Document No. 588705.

PARCEL 5

The Northeast Quarter of the Northeast Quarter of Section 36, Township 1 North, Range 18 East, Walworth County, Wisconsin.

PARCEL 6

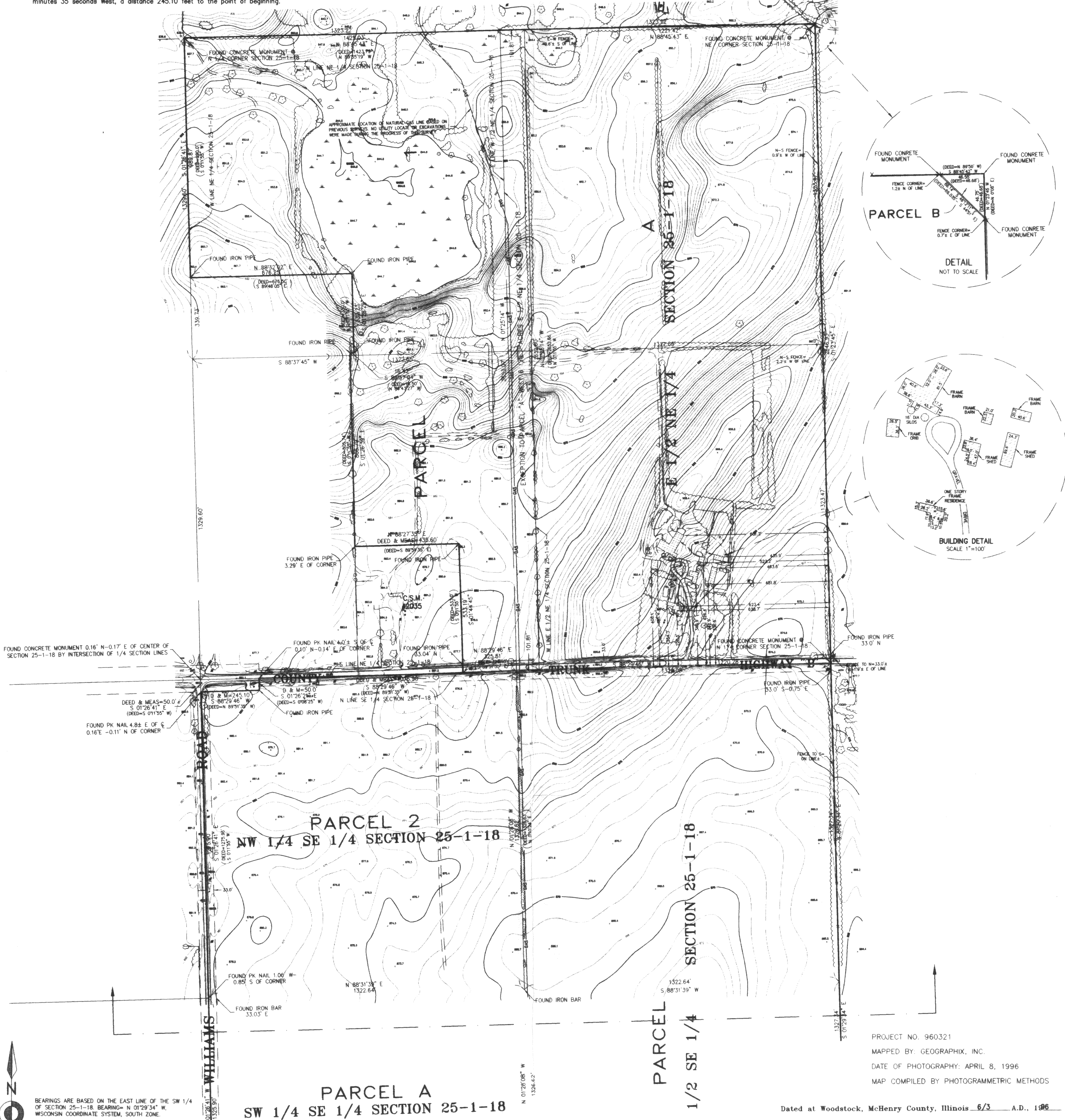
Being Lot 1 of Certified Survey Map 2036 in the Southeast Quarter of Section 36, Township 1 North, Range 18 East, Village of Genoa City, Walworth County, Wisconsin, being more completely described as follows: Commencing at the Southwest corner of the Northwest Quarter of the Southeast Quarter of said Section 36; thence South 89 degrees 44 minutes 19 seconds East, a distance of 281.04 feet to the point of beginning; thence from the point of beginning, North 00 degrees 00 minutes 21 seconds East, 211.77 feet to a point; thence South 89 degrees 58 minutes 54 seconds West, a distance of 4.28 feet to a point; thence North 00 degrees 19 minutes 37 seconds East, a distance of 206.01 feet to a point; thence South 89 degrees 47 minutes 39 seconds East, a distance of 209.86 feet to a point; thence South 00 degrees 00 minutes 19 seconds West, a distance of 417.98 feet to a point; thence North 89 degrees 44 minutes 19 seconds West, a distance of 206.75 feet to the point of beginning. Also with a 66 foot wide easement described as follows: Beginning at the Northwest corner of the above described lot 1; thence North 89 degrees 47 minutes 25 seconds West, a distance of 211.56 feet to a point; thence North 0 degrees 21 minutes 27 seconds East, a distance of 94.43 feet to a point; thence South 89 degrees 59 minutes 29 seconds West, a distance of 66.95 feet to a point; thence North 00 degrees 00 minutes 22 seconds East, a distance of 66.00 feet to a point; thence North 89 degrees 59 minutes 29 seconds East, a distance of 132.84 feet to a point; thence South 0 degrees 12 minutes 56 seconds East, a distance of 94.30 feet to a point; thence South 89 degrees 47 minutes 25 seconds East, a distance of 214.14 feet to a point; thence South 0 degrees 12 minutes 56 seconds East, a distance of 66.37 feet to a point; thence North 89 degrees 47 minutes 55 seconds West, a distance of 69.67 feet to the point of beginning.

PARCEL 7

Being Lot 1 of C.S.M. #540 in the Northeast Quarter of Section 36, Township 1 North, Range 18 East, Village of Genoa City, Walworth County, Wisconsin, being more completely described as follows: Commencing at the North Quarter corner of said Section 36; thence with the north line of the Northeast Quarter of said Section 36, South 89 degrees 47 minutes 57 seconds East, a distance of 1323.15 feet to a point; thence South 00 degrees 00 minutes 43 seconds West, a distance of 1043.25 feet to the point of beginning; thence from the point of beginning, South 00 degrees 00 minutes 43 seconds East, a distance of 274.80 feet to a point; thence North 89 degrees 30 minutes 40 seconds West, a distance of 162.60 feet to a point; thence North 00 degrees 25 minutes 37 seconds West, a distance of 274.80 feet to a point; thence South 89 degrees 31 minutes 11 seconds East, a distance of 164.59 feet to the point of beginning. Parcel being subject to the rights of the public for the use of Wild Rose Road.

PARCEL 8

Being part of the Southwest Quarter of the Northeast Quarter of Section 36, Township 1 North, Range 18 East, Township of Bloomfield, Walworth County, Wisconsin, being more completely described as follows: Commencing at the North Quarter corner of said Section 36; thence with the north line of the Northeast Quarter of said Section 36, South 89 degrees 47 minutes 57 seconds East, a distance of 1323.15 feet to a point; thence South 00 degrees 00 minutes 43 seconds East, a distance of 1326.20 feet to the point of beginning; thence from the point of beginning, South 00 degrees 00 minutes 43 seconds East, a distance of 243.00 feet to a point; thence North 89 degrees 37 minutes 22 seconds West, a distance of 181.32 feet to a point; thence North 00 degrees 23 minutes 06 seconds West, a distance of 242.98 feet to a point; thence South 89 degrees 37 minutes 37 seconds East, a distance of 182.90 feet to the point of beginning. Parcel being subject to the rights of the public for the use of Wild Rose Road.



CLIENT: DOUGLAS ADAMS
DRAWN BY: ST CHK'D BY: WJV
SCALE: 1"=200' SEC. 25.38 T. 1 R. 18 E.
JOB NO.: 980132P FLD. BK. PAGE
ALL DISTANCES SHOWN IN FEET AND DECIMAL PARTS THEREOF
CORRECTED TO 68° F.

NOTE: Only those Building Line Restrictions or Easements shown on a Recorded Subdivision Plat are shown hereon unless the description ordered to be surveyed contains a proper description of the required building lines or easements.

Compare your description and site markings with this plat and AT ONCE report any discrepancies which you may find.

Dated at Woodstock, McHenry County, Illinois 6/3 A.D. 1986
VANDERSTAPPEN SURVEYING, INC.

Wisconsin Registered Land Surveyor, No. S-1777