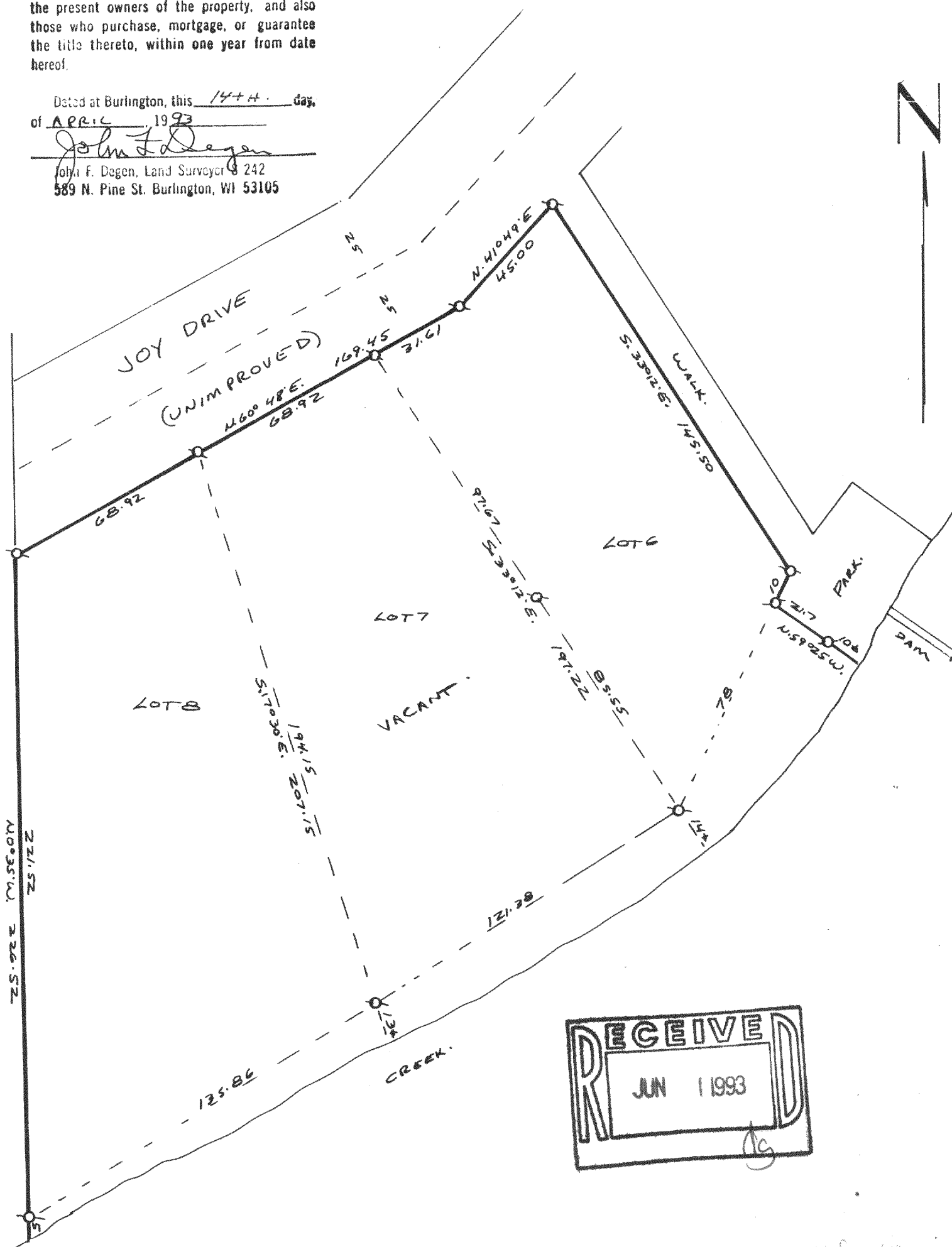


LOTS 6,7,8 IN LAKE TOMBEAU WOODS, A SUBDIVISION LOCATED IN THE SOUTHEAST 1/4 OF SECTION 24, T. 1 N., R. 18 E. OF THE 4TH P.M., TOWN OF BLOOMFIELD, WALWORTH COUNTY, WISCONSIN.

JOY DRIVE IS UNIMPROVED.

John F. Degen, Land Surveyor 8 242
589 N. Pine St. Burlington, WI 53105



MLT W 6, 7, 8

118-1213