

LAKE GENEVA  
ESTATES SUBD.

CENTER OF  
SECTION 12  
TIN RITE

LAKE GENEVA CITY LIMITS

SOUTH  
292.07

2048.57  
374.3

STREET

1320.0  
589°27' E

589°27' E  
1320.0

CEYLON COURT  
ESTATES

CEYLON COURT DRIVE

GENEVA LAKE

RESTRICTION  
PROHIBITS

Due East  
37225'

1319.9

248.01

236.50

175.34

1384.66  
537.15

Due South  
210.00

Due East  
2324.4

Due South  
210.00

Due East  
2324.4

Due South  
210.00

Due East  
2324.4

Due South  
210.00

Due East  
2324.4

Due South  
210.00

Due East  
2324.4

Due South  
210.00

Due East  
2324.4

Due South  
210.00

Due East  
2324.4

Due South  
210.00

Due East  
2324.4

423.50  
N84°00' E

S17°22' W  
1212.18

S17°22' W  
1871.65

S43°02' E  
637.46

SECTION 1

SECTION 12

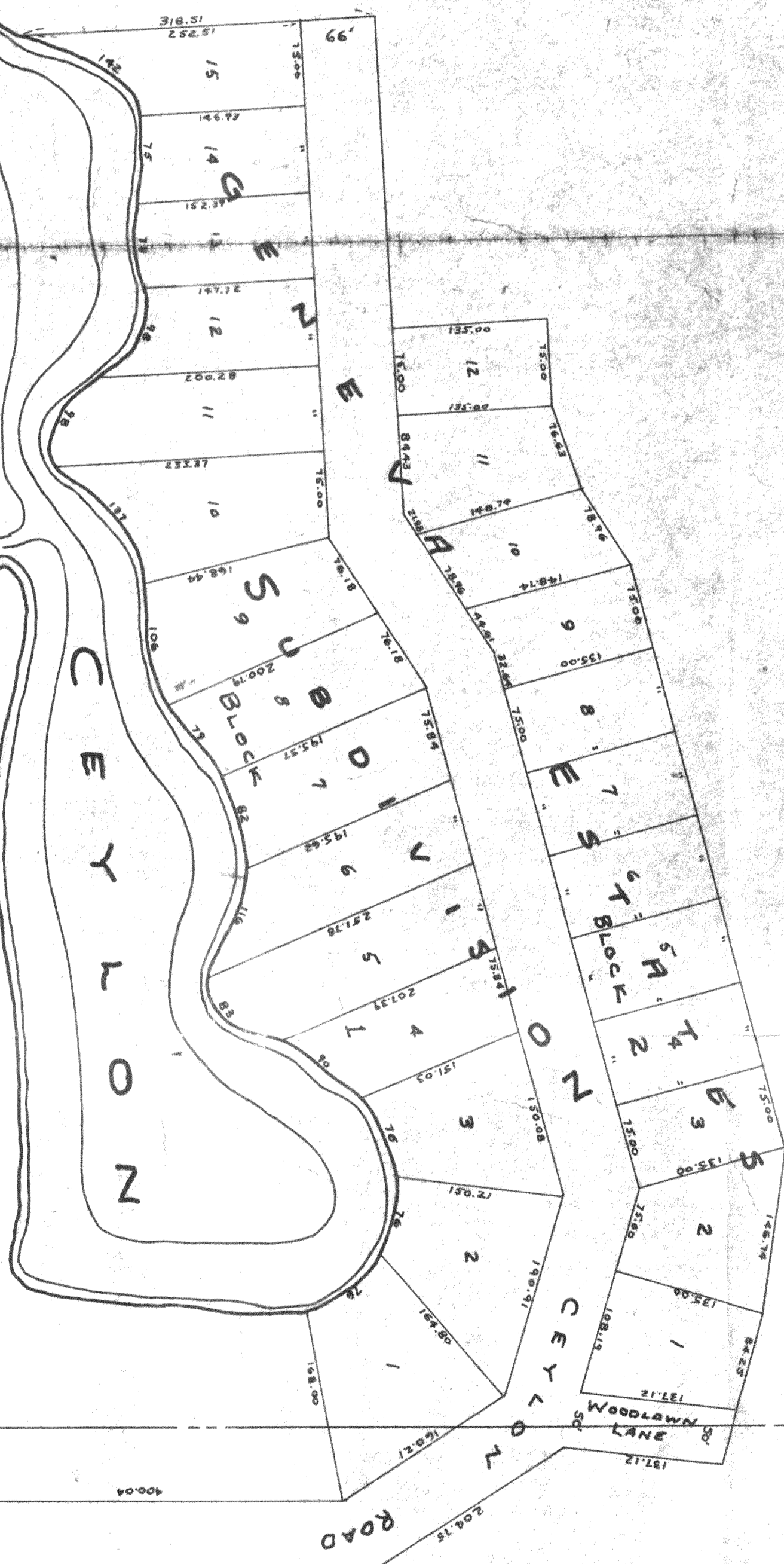
SOUTH 1/4 CORNER  
SECTION 12  
TIN RITE

S44°3'

174.5

637.46

LAKE GENEVA



● = CONCRETE MONUMENT  
○ = IRON PIPE  
Scale = 1" = 100'

PLAT OF SURVEYS OF LAND LOCATED IN  
SECTIONS 1 AND 12, TIN RITE, WAL-  
WORTH COUNTY, WISCONSIN.

OCTOBER, 1948  
COUNTY SURVEYOR

10-1-48  
10-1-48