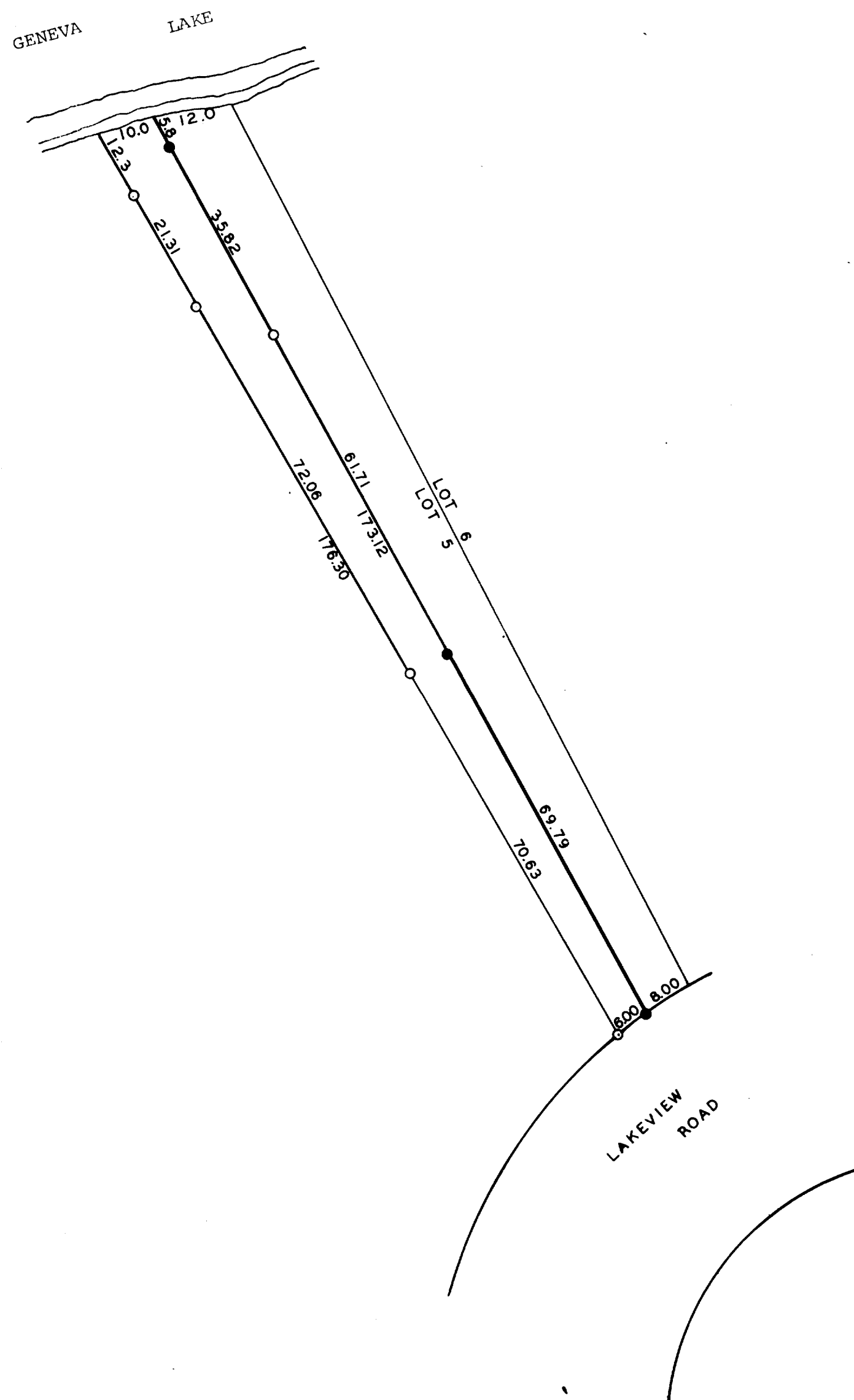


GEORGE T. DUNHAM  
SURVEYING & SUBDIVIDING  
DELAVER, WISCONSIN



N

Scale - 1" = 20'.  
○ = Iron Pipe  
● = Concrete Monument

Plat of survey of part of Lot 5, Block 1 of  
Wooddale Addition located in Section 16, T 1 N,  
R 17 E, Walworth County, Wisconsin.  
December 17, 1968

*George T. Dunham*  
George T. Dunham, Surveyor

117-72