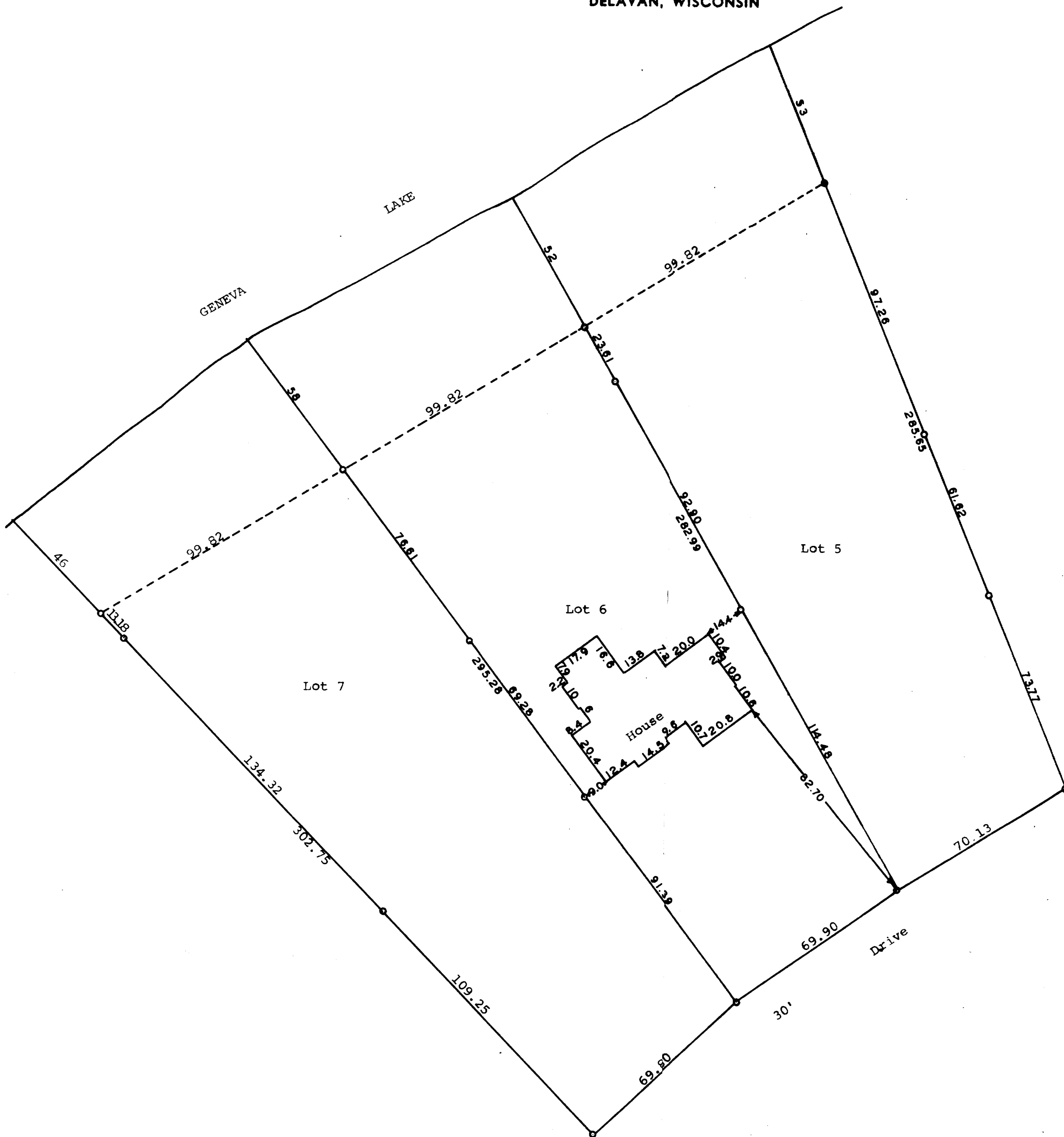


GEORGE T. DUNHAM
SURVEYING & SUBDIVIDING
DELAVER, WISCONSIN



Scale - 1" = 30'
○ = Iron Pipe
● = Concrete Monument

STATE OF WISCONSIN)
COUNTY OF WALWORTH) SS

I, George T. Dunham, Surveyor, certify that I have surveyed the property described as follows,

Lots 5, 6, and 7, The Birches First Addition located in Section 9,
T 1 N, R 17 E, Walworth County, Wisconsin,
and that the plat shown above is an accurate survey and a true representation thereof and correctly shows the exterior boundary lines and location of buildings on said property and the correct measurements thereof.
October 10, 1973

George T. Dunham
George T. Dunham, Surveyor

