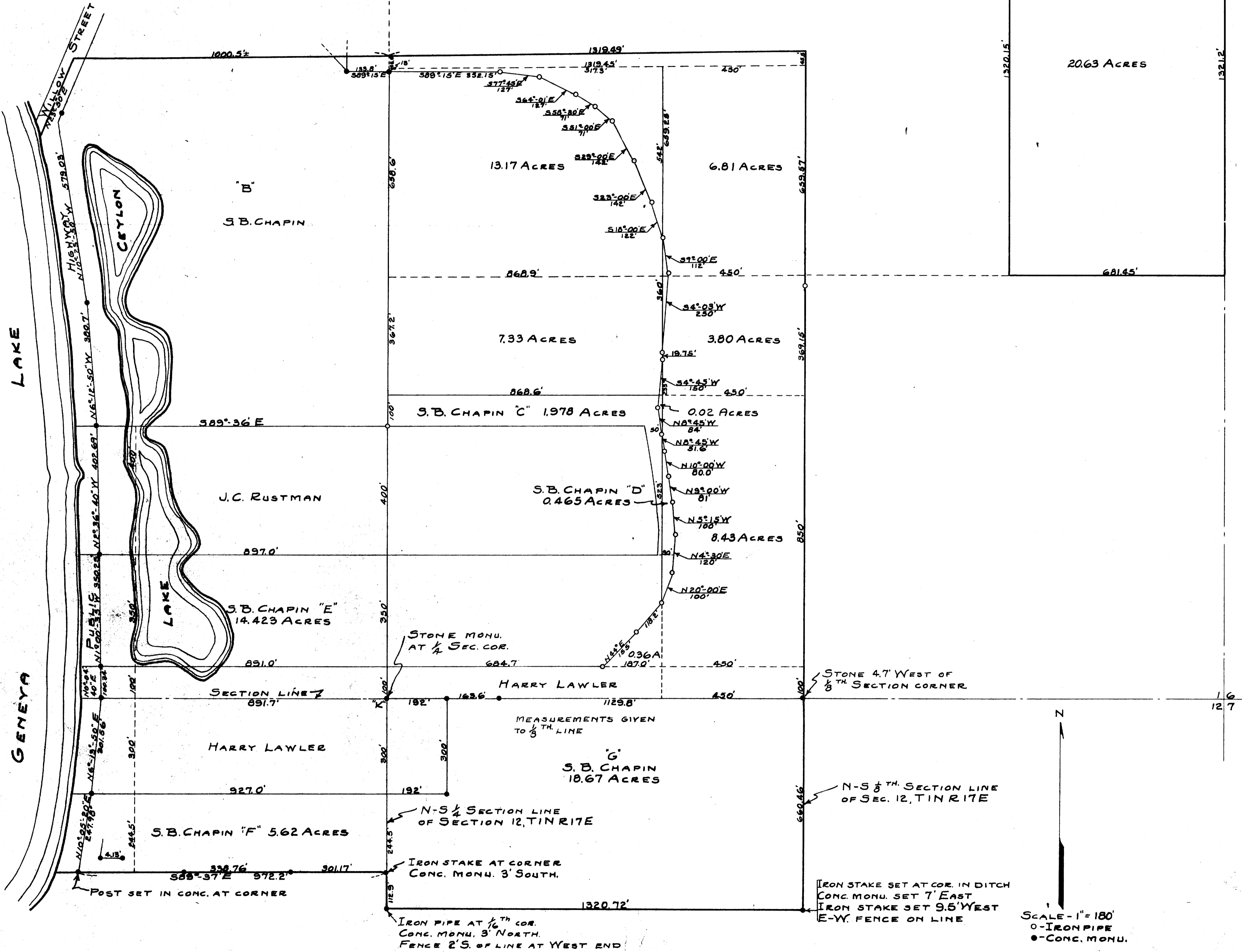


CENTER OF SECTION 1,
TIN RITE

EAST 1/4 SEC. COR. OF
SECTION 1, TIN RITE

SOUTH STREET



20.63 ACRES

LAKE

GENEVA

B

S.B. CHAPIN

13.17 ACRES

6.81 ACRES

7.33 ACRES

3.80 ACRES

S.B. CHAPIN "C" 1.978 ACRES

0.02 ACRES

S.B. CHAPIN "D" 0.465 ACRES

8.43 ACRES

J.C. RUSTMAN

S.B. CHAPIN "E" 14.423 ACRES

HARRY LAWLER

S.B. CHAPIN "G" 18.67 ACRES

S.B. CHAPIN "F" 5.62 ACRES

STONE 4.7 WEST OF
1/8 TH SECTION CORNER

STONE MONU.
AT 1/4 SEC. COR.

MEASUREMENTS GIVEN
TO 1/8 TH LINE

N-S 1/2 TH SECTION LINE
OF SEC. 12, TIN RITE

IRON STAKE AT CORNER
CONC. MONU. 3' SOUTH.

IRON STAKE SET AT COR. IN DITCH
CONC. MONU. SET 7' EAST
IRON STAKE SET 9.5' WEST
E-W. FENCE ON LINE

IRON PIPE AT 1/4 COR.
CONC. MONU. 3' NORTH.
FENCE 2'S. OF LINE AT WEST END

SCALE - 1" = 180'
O - IRON PIPE
□ - CONC. MONU.

PLAT OF LAND LOCATED IN SECTIONS 1 AND
12 OF TIN RITE OF WALWORTH COUNTY,
WISCONSIN.
Lloyd J. Jensen
COUNTY SURVEYOR
MAY 1946

UP-146 (Big Foot Nat Park)

117-4(2)