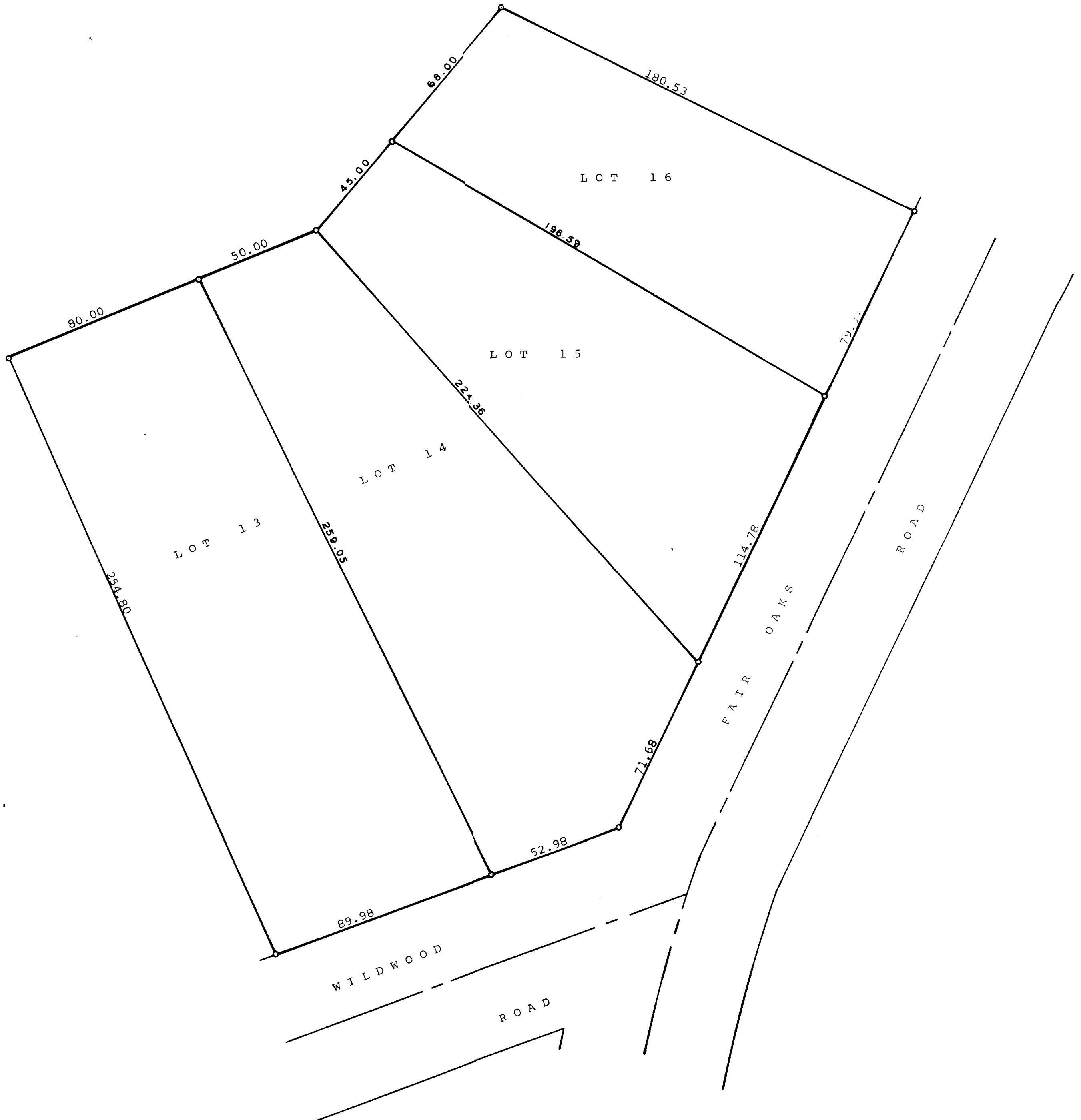




Scale - 1" = 30'
● = Iron Pipe



Plat of survey of Lots 13-16 inclusive, Block 15 of Wooddale Addition, a subdivision located in Sections 9 and 16, T 1 N, R 17 E, Walworth County, Wisconsin.
July 12, 1973

George T. Dunham
George T. Dunham, Surveyor



117-406