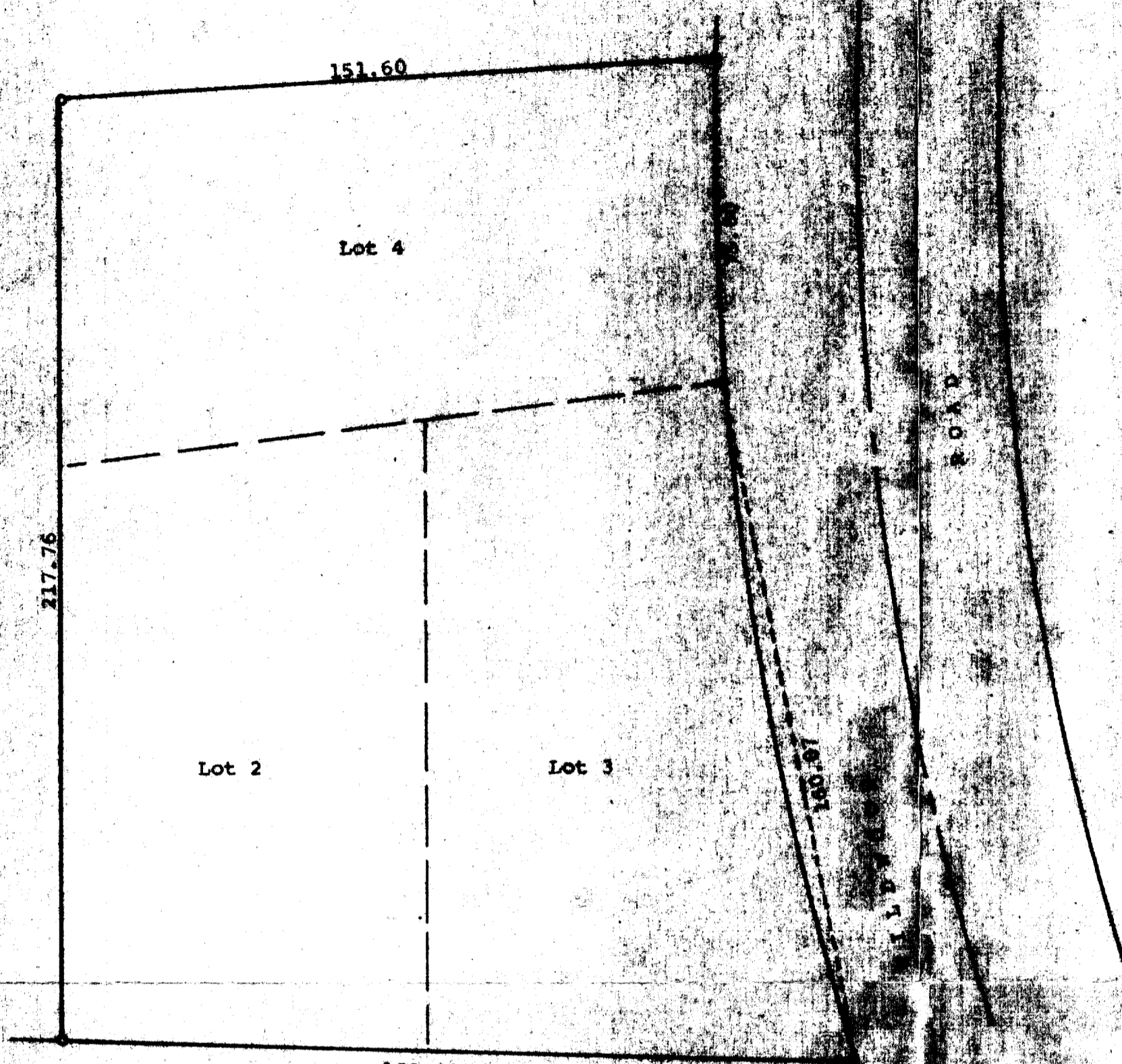


GEORGE T. DUNHAM



Scale - 1" = 30'
 ● = Iron Pipe

FONTANA-LAKE GENEVA

ROAD

Plat of survey of Lots 2, 3 and 4 in Block 15 of
 Woodlake Addition, Section 16, T 1 N,
 R 17 E, Walworth County, Wisconsin.
 November 31, 1978

George T. Dunham
 George T. Dunham, Surveyor

