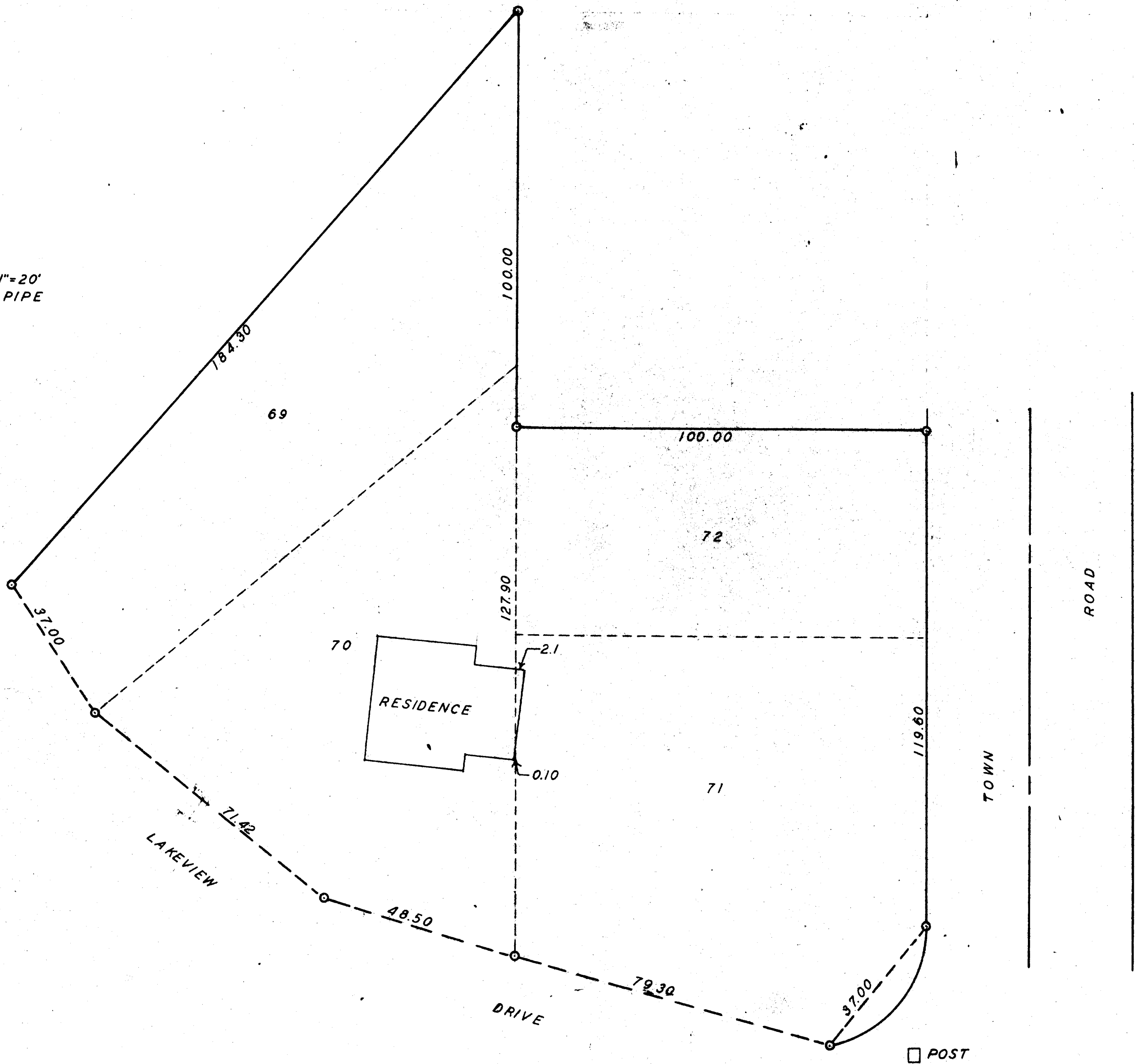


DUNHAM & RASMUSSEN  
SURVEYING & ENGINEERING  
DELAVER, WISCONSIN

N

SCALE - 1" = 20'  
O = IRON PIPE



Plat of survey of Lots 69, 70, 71, and 72 of Lake View Park located  
in the Town of Linn, Walworth County, Wisconsin  
July 21, 1960

*George T. Dunham*  
George T. Dunham, Surveyor

ILVP-15A