

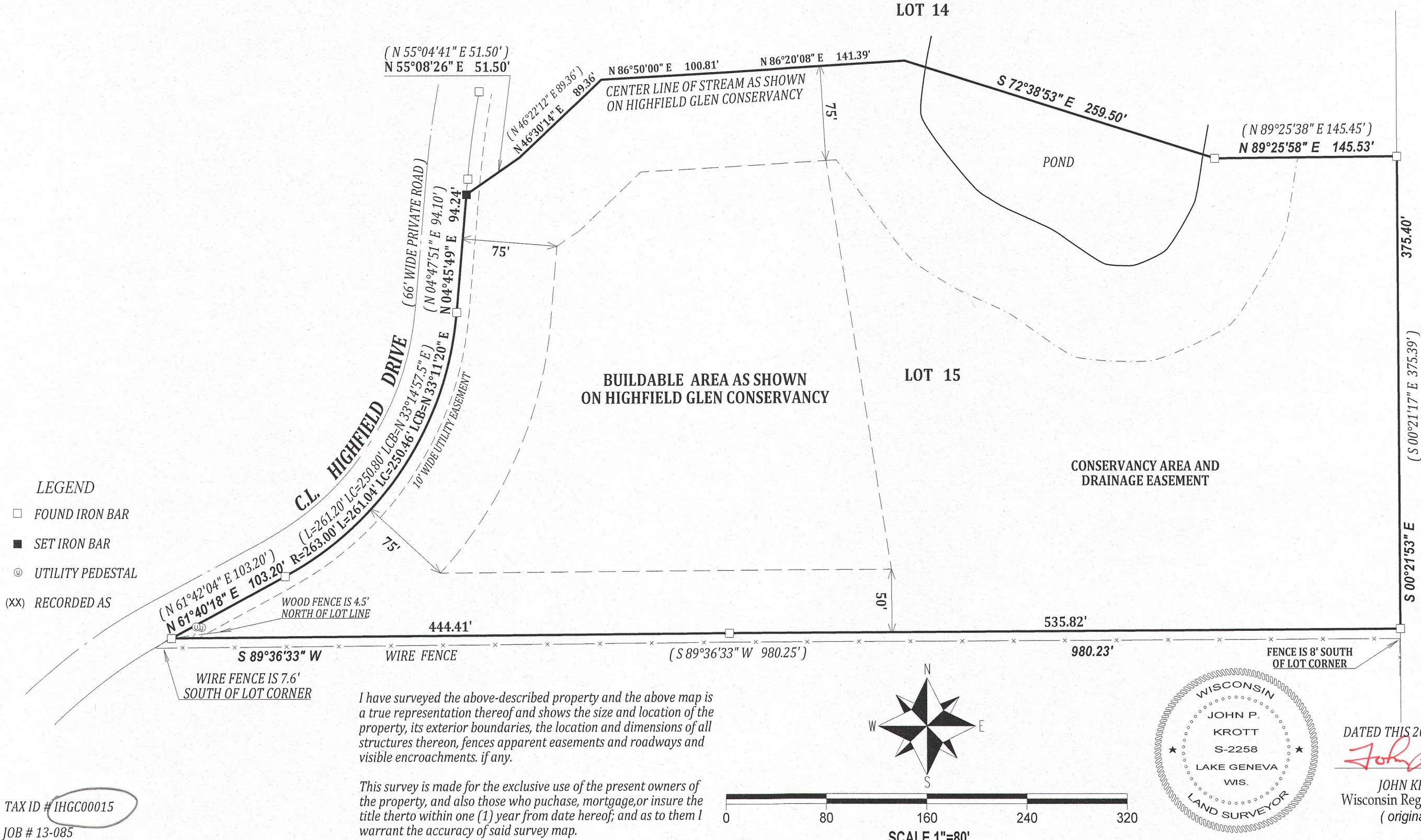
PREPARED FOR
TONY SIENKOWSKI
RE MAX GENEVA REALTY, LTD
101 BROAD ST.
SUITE 102
LAKE GENEVA WI. 53147

PLAT OF SURVEY

-OF-

KROTT SURVEYING INC.
N3705 WILLOW BEND LANE
LAKE GENEVA WI. 53147
PHONE # (262)248-3697
FAX # (262)249-0639

LOT 15 HIGHFIELD GLEN CONSERVANCY, A SUBDIVISION
RECORDED IN CABINET C SLIDE 150 AS DOCUMENT NO.
552142 LOCATED IN SECTION 31, TOWN 1 NORTH, RANGE
17 EAST, WALWORTH COUNTY, WISCONSIN.



TAX ID # IHGC00015
JOB # 13-085

117-3543