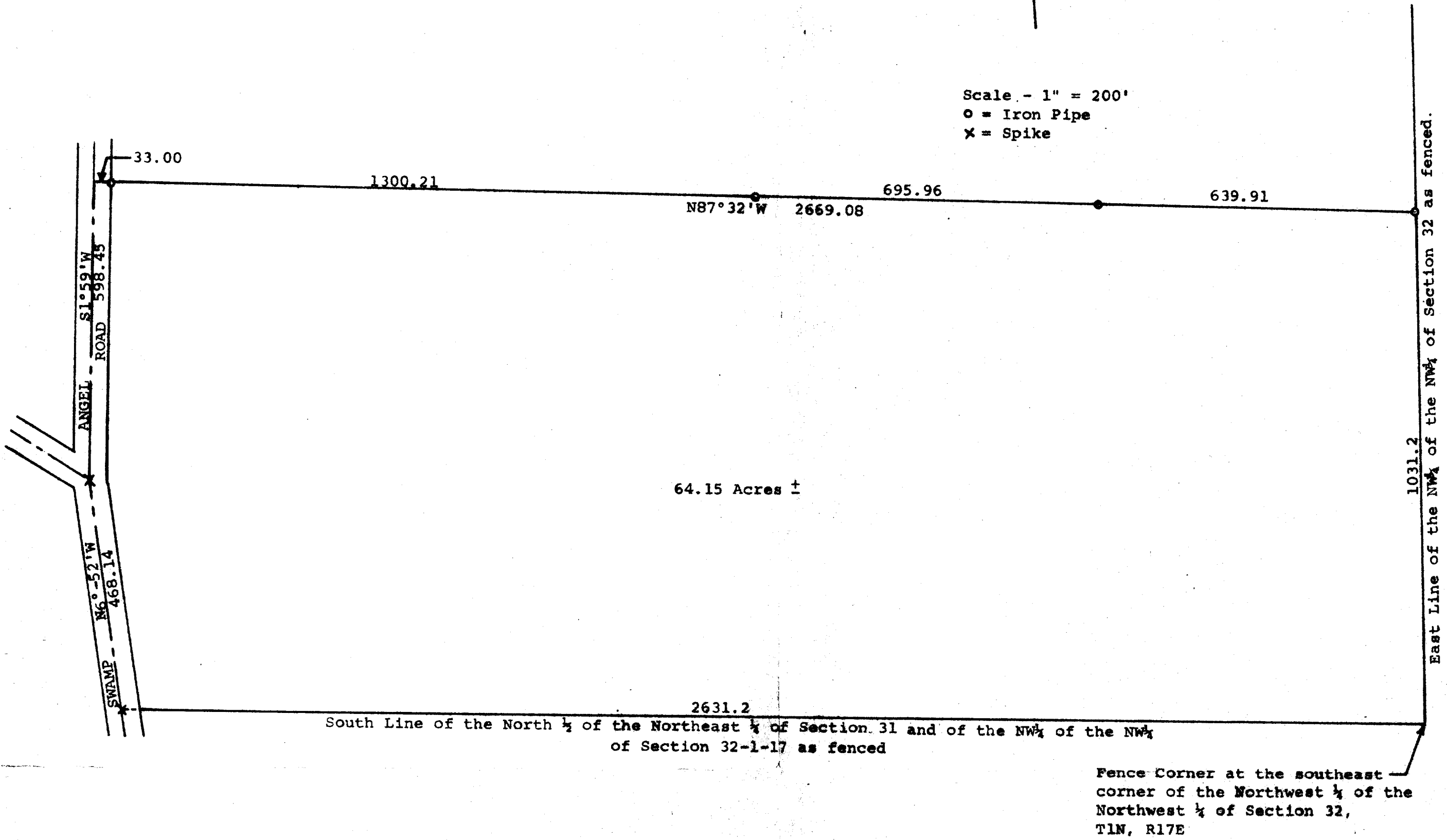


GEORGE T. DUNHAM  
SURVEYING & ENGINEERING  
DELAVER, WISCONSIN

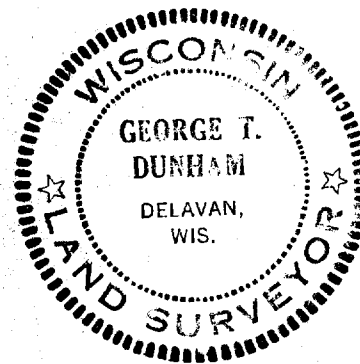


Scale - 1" = 200'  
O = Iron Pipe  
X = Spike



Plat of survey of part of the North 1/2 of the Northeast 1/4 of Section 31, and of the NW 1/4 of the NW 1/4 of Section 32, T1N, R17E Walworth County, Wisconsin. August 3, 1972

*George T. Dunham*  
George T. Dunham, Surveyor



C.S 1498+ IC 32-4

L-31-1 L-32-4  
H 31-1B L-32-4A

117-212