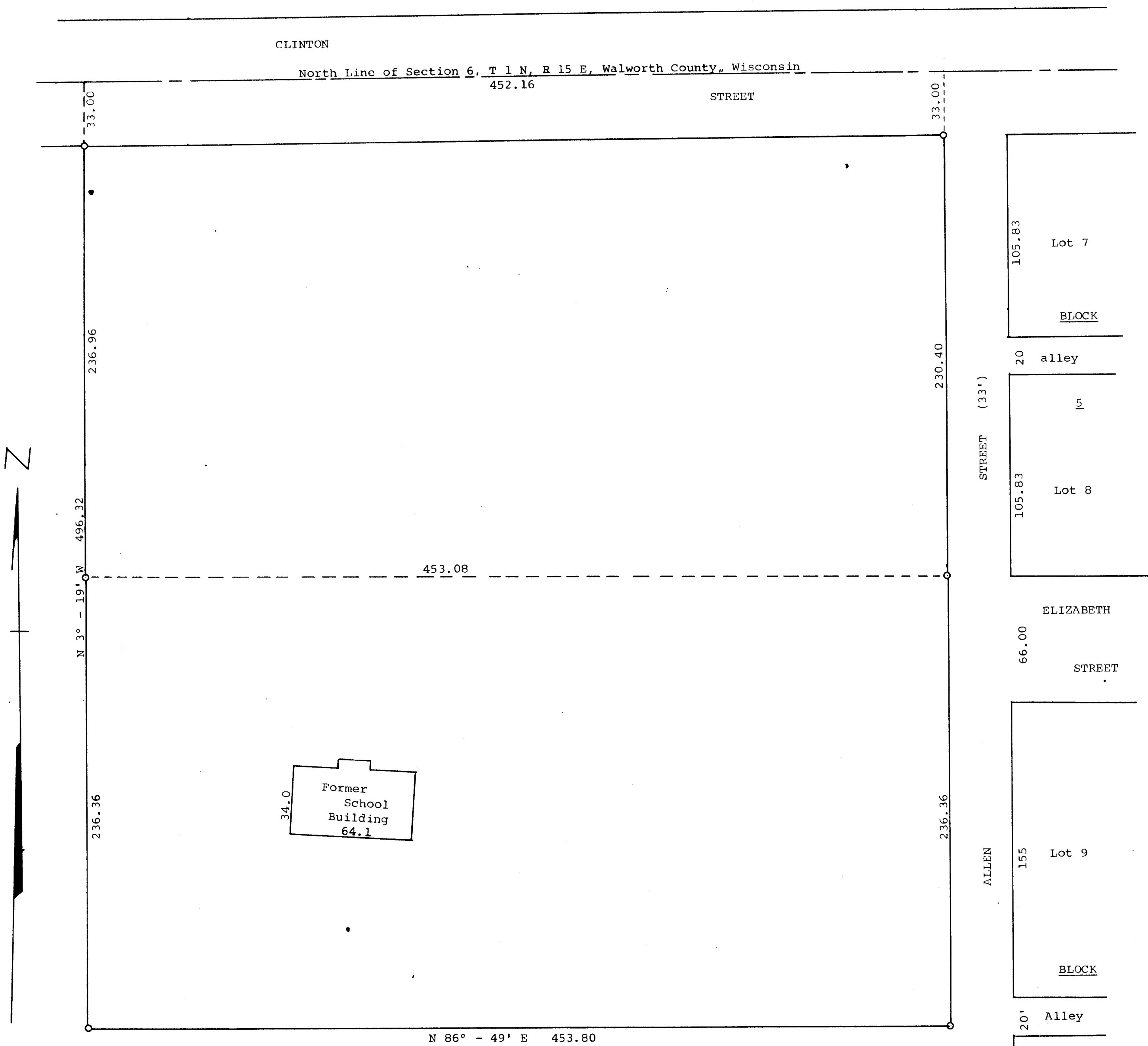


GEORGE T. DUNHAM
SURVEYING & SUBDIVIDING
DELAVAN, WISCONSIN



Scale - 1" = 40'
O = Iron Pipe

Plat of survey of land formerly owned by the Darien Consolidated School District located in the Village of Allens Grove, Section 6, T 1 N, R 15 E, Walworth County, Wisconsin.
March 4, 1970

George T. Dunham
George T. Dunham, Surveyor

S-6-1