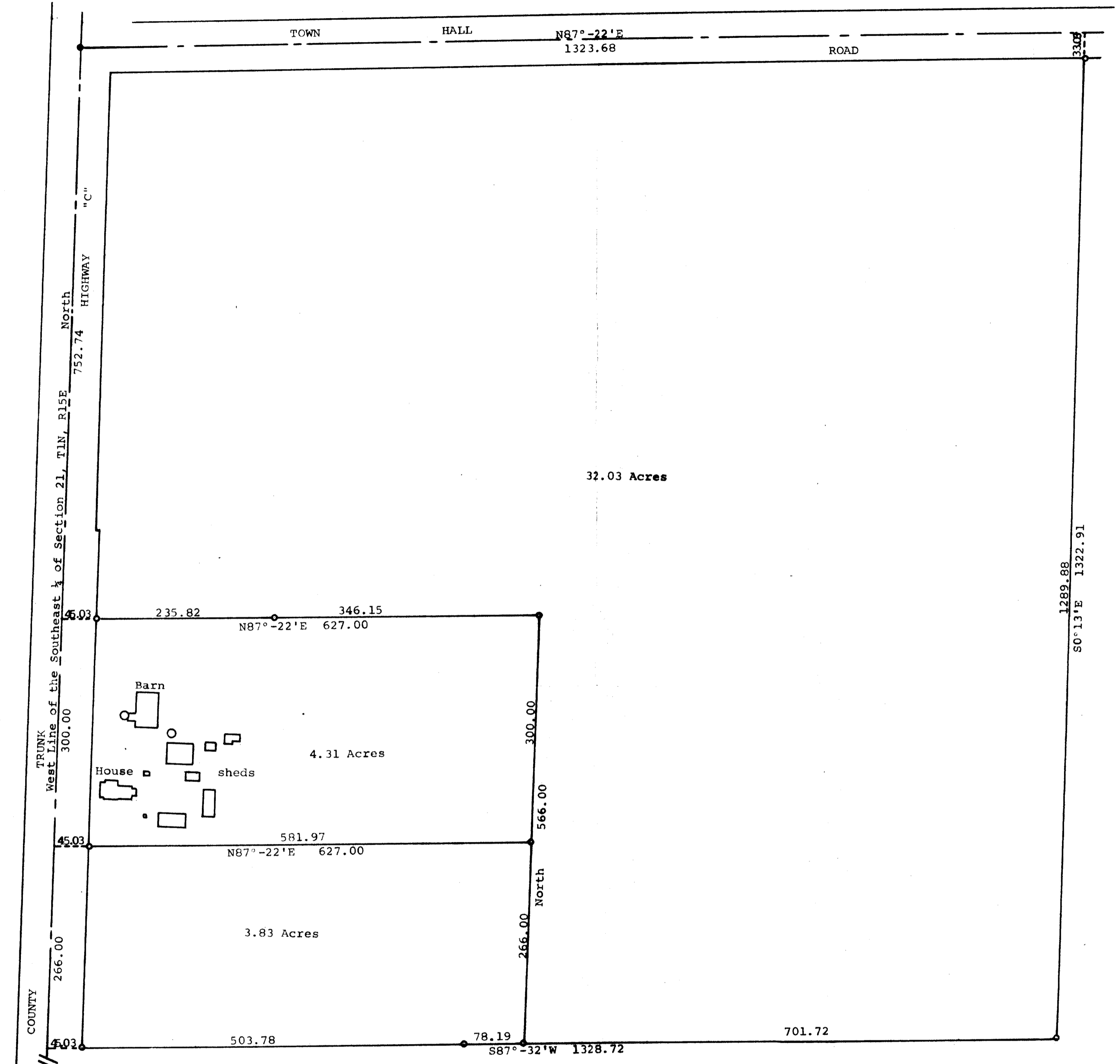


GEORGE T. DUNHAM
 SURVEYING & SUBDIVIDING
 DELAVAN, WISCONSIN



Scale - 1" = 100'
 ○ = Iron Pipe
 ● = Concrete Monument
 ● = Metal Plate

South 1/4 Section Corner of Section 21, T1N, R15E

Plat of survey of the Northwest 1/4 of the Southeast 1/4 of Section 21, T 1 N, R 15 E, Walworth County, Wisconsin. November, 1972

George T. Dunham
 George T. Dunham, Surveyor

AS-21-5
 Cent Survey 186
 CS-186-1
 " " -2

