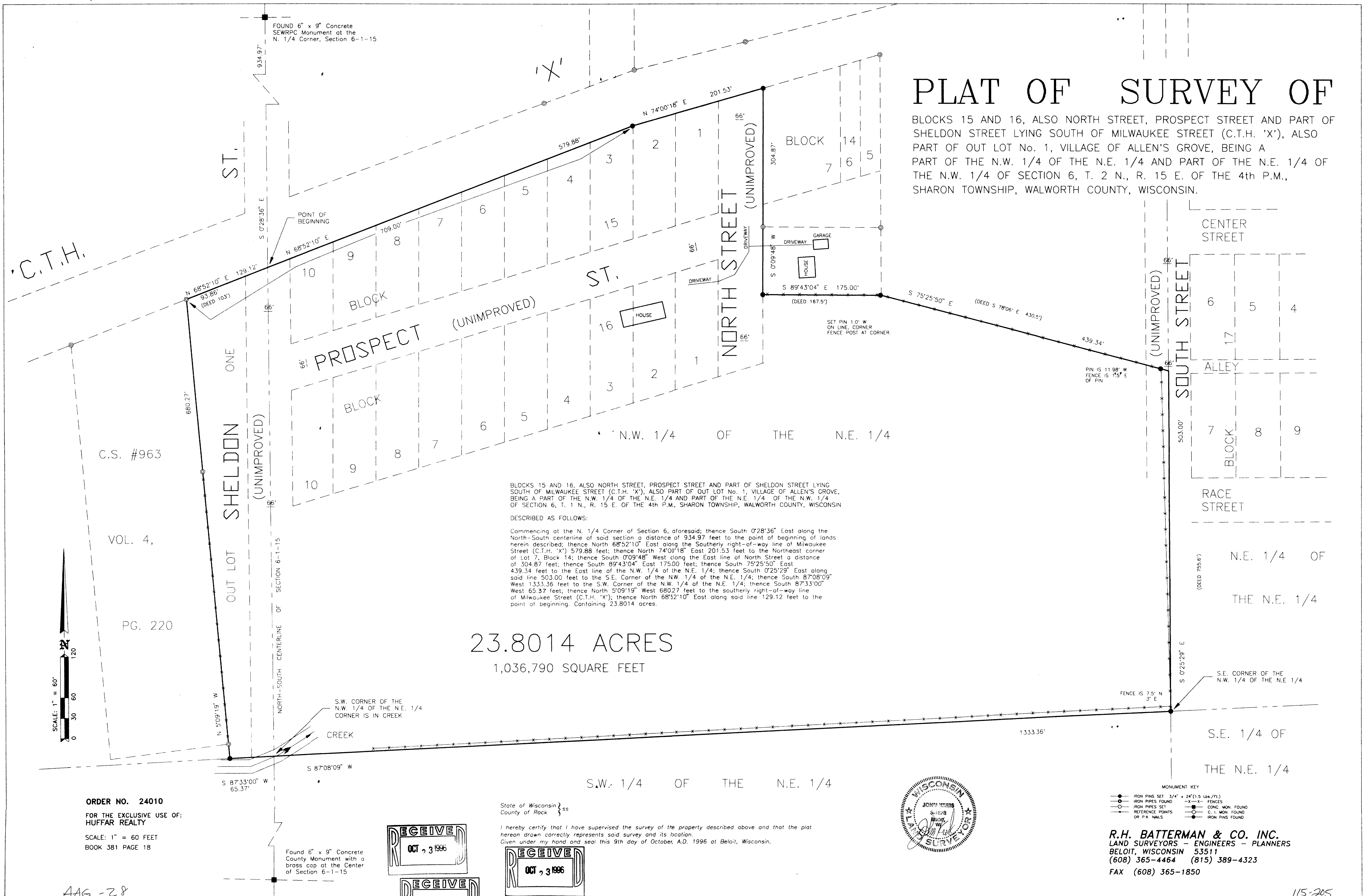


PLAT OF SURVEY OF

BLOCKS 15 AND 16, ALSO NORTH STREET, PROSPECT STREET AND PART OF
SHELDON STREET LYING SOUTH OF MILWAUKEE STREET (C.T.H. 'X'), ALSO
PART OF OUT LOT No. 1, VILLAGE OF ALLEN'S GROVE, BEING A
PART OF THE N.W. 1/4 OF THE N.E. 1/4 AND PART OF THE N.E. 1/4 OF
THE N.W. 1/4 OF SECTION 6, T. 2 N., R. 15 E. OF THE 4th P.M.,
SHARON TOWNSHIP, WALWORTH COUNTY, WISCONSIN.



R.H. BATTERMAN & CO. INC.
LAND SURVEYORS - ENGINEERS - PLANNERS
BELOIT, WISCONSIN 53511
(608) 365-4464 (815) 389-4323
FAX (608) 365-1850