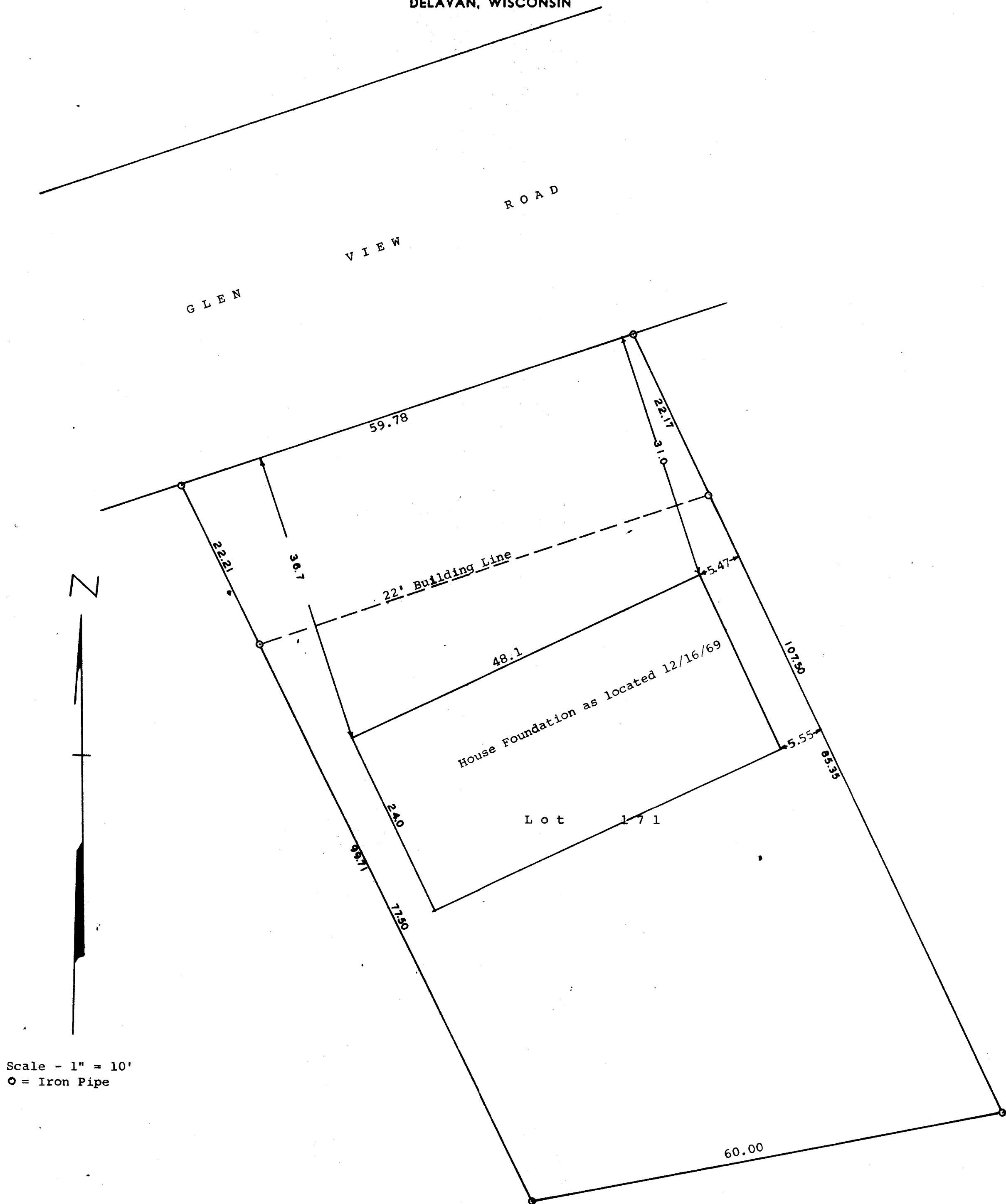


GEORGE T. DUNHAM  
SURVEYING & SUBDIVIDING  
DELAVER, WISCONSIN



STATE OF WISCONSIN) SS  
COUNTY OF WALWORTH)

I, George T. Dunham, Surveyor, certify that I have surveyed the property described as follows,  
Lot 171 of 2nd Addition to Cedar Point Park, Village of Williams Bay, Walworth County, Wisconsin  
and that the above plat is an accurate survey and a true representation thereof and correctly shows the exterior boundary lines of said property.  
August 7, 1969

*George T. Dunham*  
George T. Dunham, Surveyor

I, George T. Dunham, Surveyor, do further certify that on December 16, 1969, I did locate the foundation built on said lot and that the above plat shows the location of said foundation and the correct measurements thereof.  
January 6, 1970  
Certified to be correct  
December 23, 1970 *George T. Dunham*

*George T. Dunham*  
George T. Dunham, Surveyor