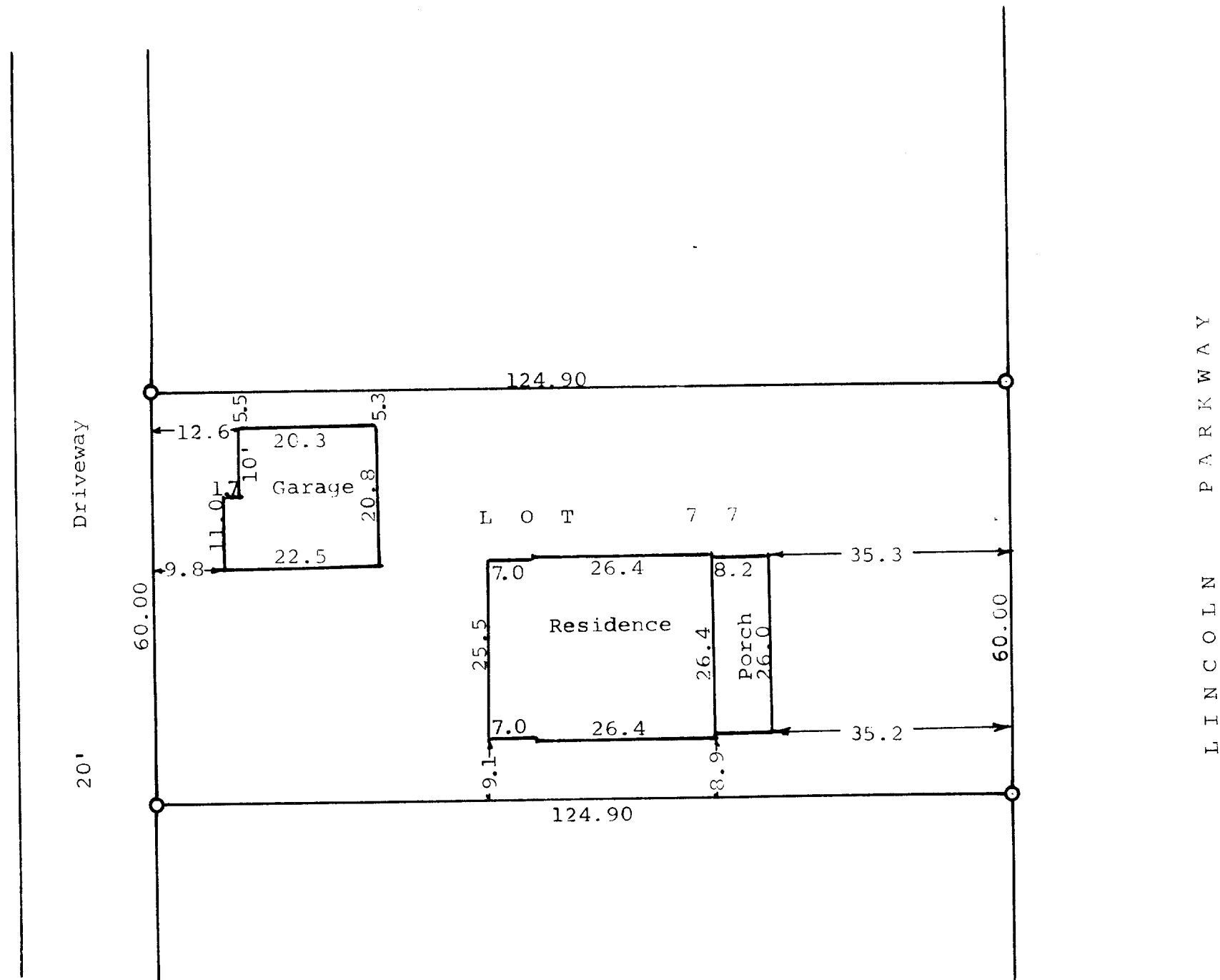


GEORGE T. DUNHAM
SURVEYING & SUBDIVIDING
DELAVER, WISCONSIN

N

Scale - 1" = 20'
● = Iron Pipe



STATE OF WISCONSIN)
WALWORTH COUNTY) SS

I, George T. Dunham, Surveyor, do certify that I have surveyed the property described as follows,

Lot 77 of the Original Subdivision of Cedar Point Park in the Village of Williams Bay, according to the plat thereof on record in the office of the Register of Deeds in and for the County of Walworth, Wisconsin

and that the above plat is an accurate survey and a true representation thereof and correctly shows the exterior boundary lines and location of the improvements located thereon and the correct measurements thereof.

March 31, 1965

George T. Dunham
George T. Dunham, Surveyor

11-46