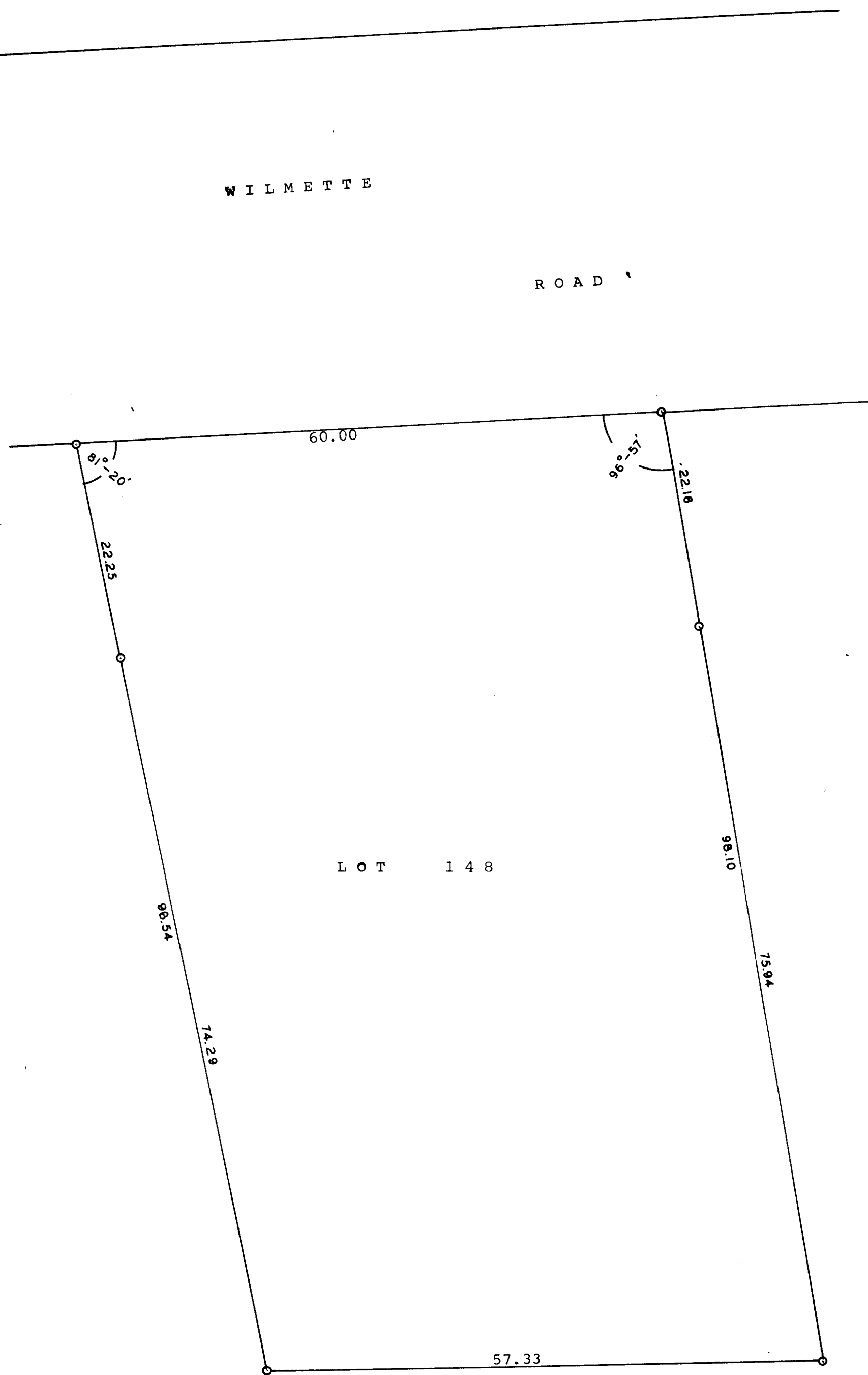


GEORGE T. DUNHAM
SURVEYING & SUBDIVIDING
DELAVER, WISCONSIN



Scale 1" = 10'
O = Iron Pipe

Plat of survey of Lot 148 in the 2nd Addition to Cedar Point
Park located in the Village of Williams Bay, Walworth County,
Wisconsin

October 15, 1962

George T. Dunham
George T. Dunham, Surveyor