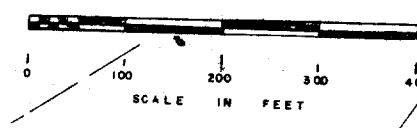


PLAT OF SURVEY OF
THE HARRIS FARM

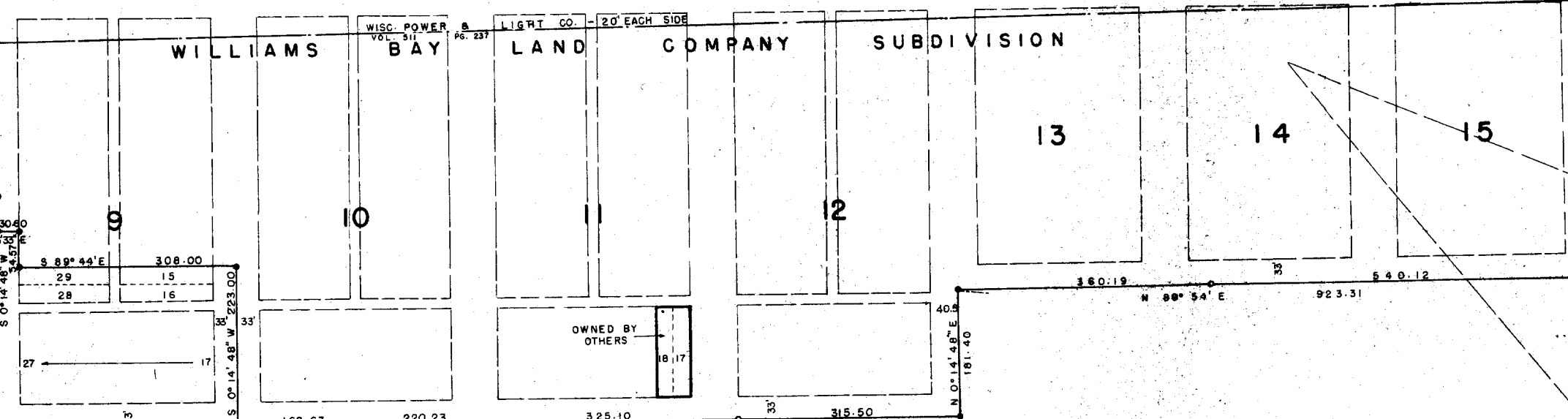
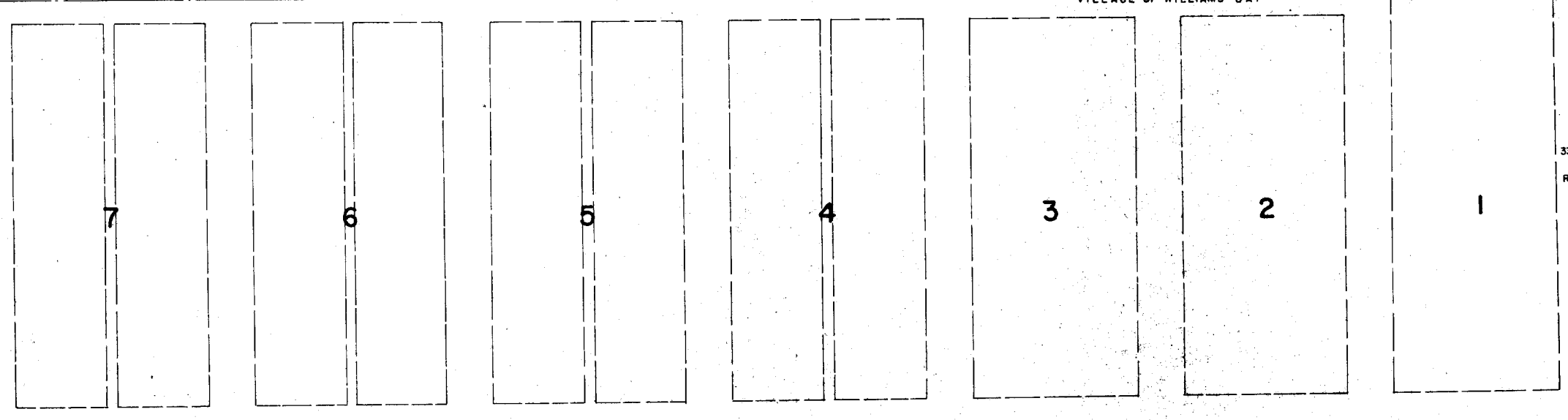
LOCATED IN THE S 1/2 SECTION 31, T 2 N, R 17 E,
AND IN THE N 1/2 SECTION 6, T 1 N, R 17 E,
WALWORTH COUNTY, WISCONSIN

N



234.20 ACRES

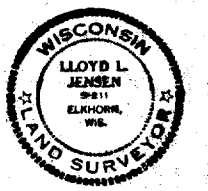
NOTE - EXACT LOCATION OF TELEPHONE CO. CABLE
CANNOT BE DETERMINED FROM DEED - VOL. 510 PG. 501



CHICAGO & NORTHWESTERN
RAILWAY

LEGEND
● - CONCRETE MONUMENT
○ - IRON PIPE

JENSEN & JOHNSON INC.
ELKHORN, WISCONSIN
Lloyd L. Jensen
LLOYD L. JENSEN
COUNTY SURVEYOR



OCT. 14, 1966

T 2 N R 17 E 11-209J

UP-81+83 + G-31-6V