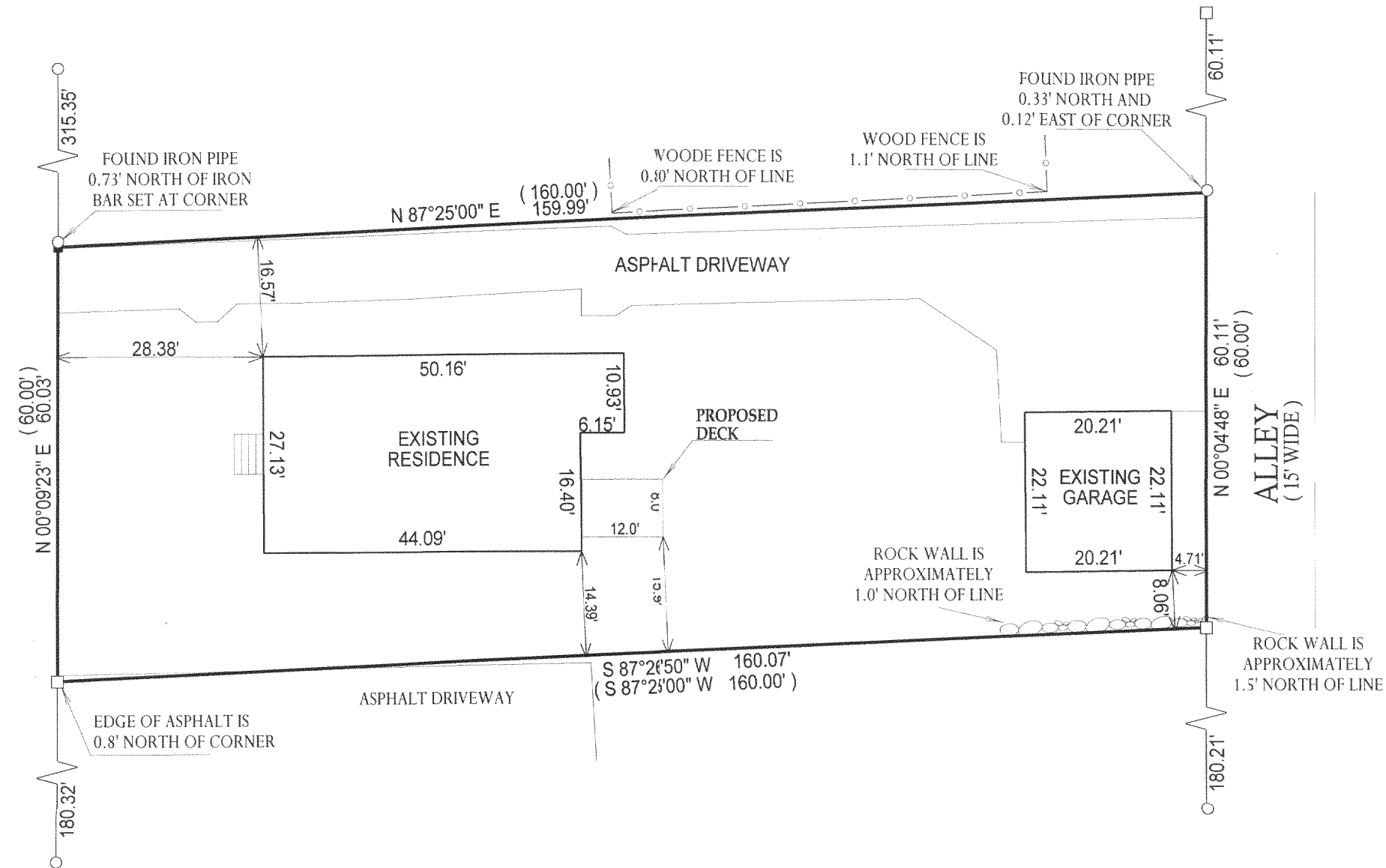






-OF-

STAM STREET  
(49.5' WIDE)

MMV - 4 2016



 = FOUND IRON BAR  
 = FOUND IRON PIPE  
 = SET IRON PIPE  
 = SET IRON BAR

TAX ID #:WBV 00016

COMPARE LEGAL DESCRIPTION ABOVE AND DRAWING WITH DEED. FOR BUILDING RESTRICTIONS AND EASEMENTS NOT SHOWN, REFER TO DEED, ABSTRACT SOURCES AND LOCAL MUNICIPAL CODES. NOTIFY THE SURVEYOR IMMEDIATELY OF ANY DISCREPANCY.

The seal is circular with a decorative, wavy outer border. Inside the border, the text "WISCONSIN" is at the top and "LAND SURVEYOR" is at the bottom, both following the curve of the circle. In the center, the text "JOHN P. KROTT" is on the first line, "S-2258" is on the second line, and "LAKE GENEVA WIS." is on the third line. Two small stars are positioned on the left and right sides of the central text, between the top and bottom curved text.

DATED THE 14th DAY OF APRIL, 2006.

WPBV-160

011-2045